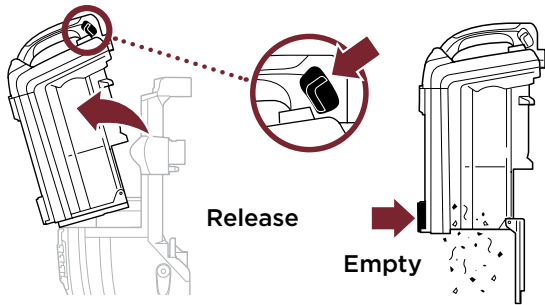


MAINTENANCE

Empty dust cup after each use



Filter Maintenance

To keep suction strong, rinse the filters with water only and allow them to air-dry completely before reinstalling them. Tap loose dirt from filters as needed between washes.

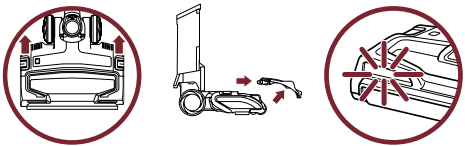
See enclosed Owner's Guide for complete details on removing and cleaning filters.

ZERO-M Zero-M Technology

The Zero-M Self-Cleaning Brushroll delivers nonstop hair removal. To clear any blockages, see instructions below.

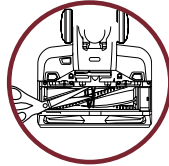
Cleaning the Brushroll

1. To open the brushroll garage, slide both release buttons on the floor nozzle away from you, towards the back of the nozzle, then lift off the lid.
2. Clear away any objects or debris.
3. To close the brushroll garage, insert the 3 tabs on top of the lid into the 3 slots in the nozzle, then push down on both sides of the lid until it clicks securely into place. If the Brushroll Indicator Light isn't green and the headlights are flashing, check again that both sides of the lid are locked in place.



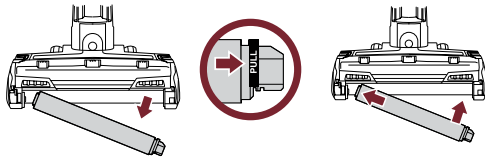
Brushroll Maintenance

Carefully remove any debris that may be impeding the brushroll.



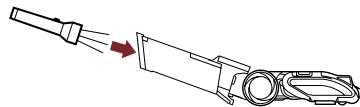
Cleaning the Soft Roller

Lift out the Soft Roller by pulling the tab on the right side. Clear away any debris, then slide the Soft Roller back into place.



Checking the Nozzle for Blockages

Tilt the neck of the nozzle back to straighten the airway, then remove any blockages.



Please be sure to read the enclosed Shark® Owner's Guide prior to using your unit.

duo clean

ZERO-M

Shark® POWERED LIFT-AWAY®

QUICK START GUIDE

Use this Quick Start Guide to learn about your new vacuum's great features.

Register your vacuum at registryourshark.com

For additional parts and accessories, visit sharkaccessories.com



For questions or to register your product, visit us online at sharkclean.com

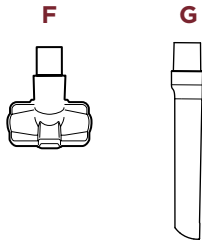
©2019 SharkNinja Operating LLC. DUOCLEAN, LIFT-AWAY, POWERED LIFT-AWAY, ZERO-M and SHARK are registered trademarks of SharkNinja Operating LLC.
ZU881_QSG_REV_MV3



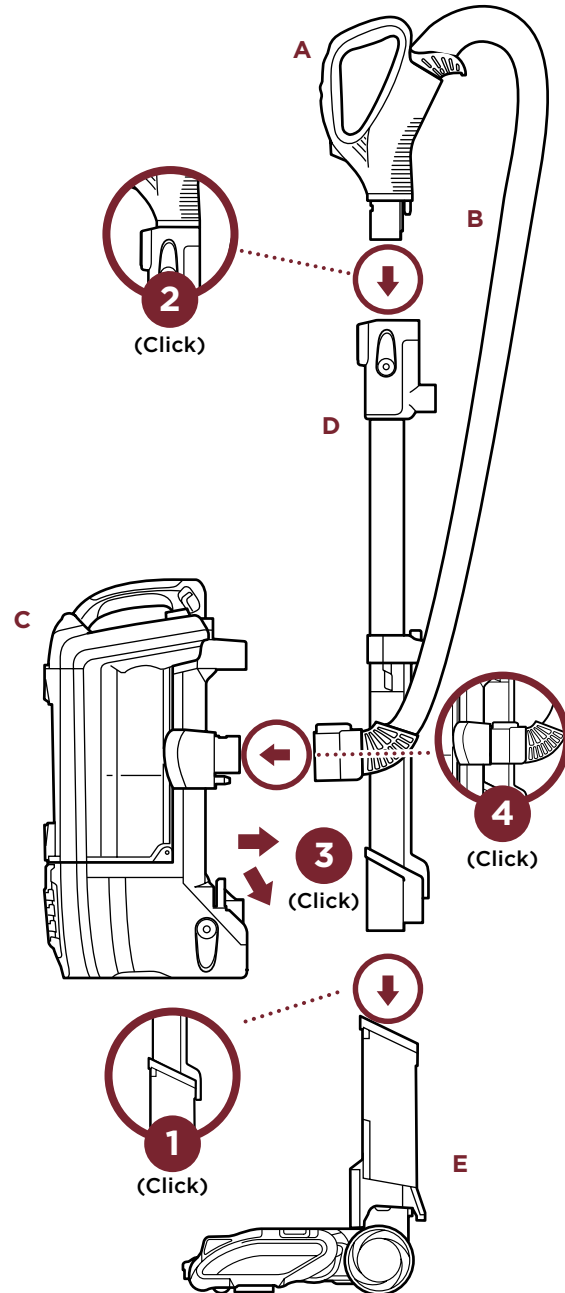
ZU881

WHAT'S INSIDE:

- A** Handle
- B** Hose
- C** Vacuum Pod
- D** Wand
- E** Motorized Floor Nozzle
- F** Pet Multi-Tool
- G** 12" Crevice Tool



1. Insert wand into floor nozzle.
2. Insert handle into wand.
3. Place pod onto wand.
Slide down to connect.
4. Press hose into back of pod.



ASSEMBLY

VERSATILE FLOOR-TO-CEILING CLEANING

UPRIGHT MODE

Use for carpet and hard-floor cleaning

Power Button



Floor Type



Place foot on floor nozzle and tilt handle back.
Choose appropriate floor setting and press power button.

POWERED LIFT-AWAY® MODE

Use for portable cleaning
on stairs or above-floor areas



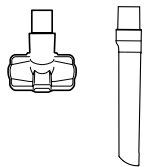
Lift-Away
Release



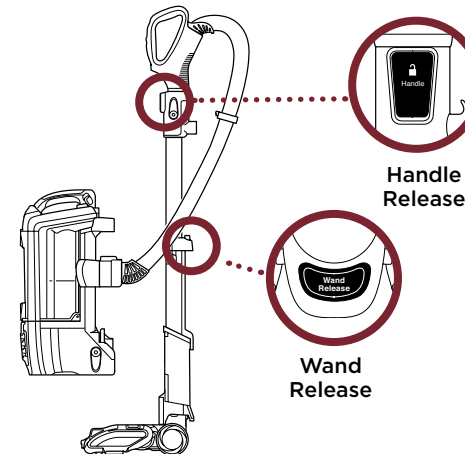
Wand
Release

Press Lift-Away Release button to lift
pod off floor nozzle. You are now ready
to clean those hard-to-reach places.

Attach any of the
specialized cleaning
accessories to the
handle or wand.

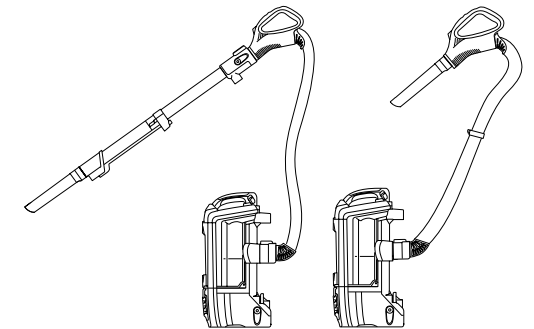


ABOVE-FLOOR CLEANING IN LIFT-AWAY MODE



Handle
Release

Wand
Release



Attach desired cleaning accessory
to wand or handle.

For complete instructions, see the enclosed Owner's Guide.

For additional parts and accessories, visit sharkaccessories.com