

Please be sure to read the enclosed Shark® Owner's Guide prior to using your unit.

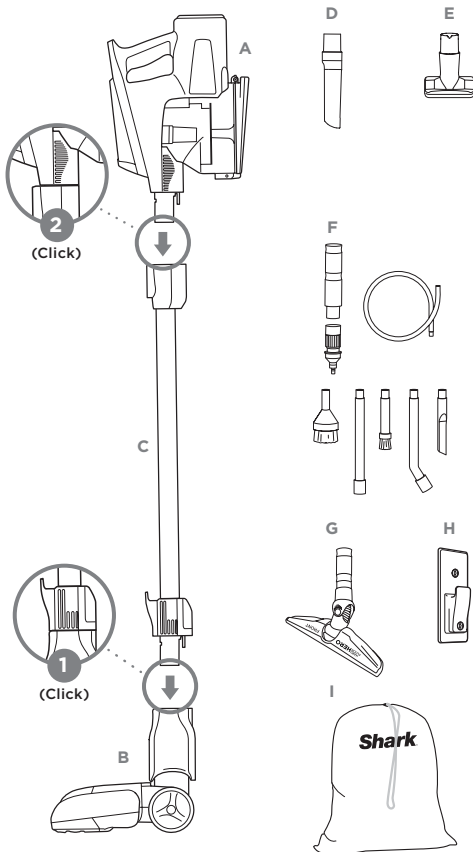
Shark® Rocket™ ULTRA-LIGHT VACUUM

QUICK START GUIDE

WHAT'S INSIDE

- A** Handheld Vacuum
- B** Motorized Floor Nozzle
- C** Wand
- D** 8" Crevice Tool
- E** Upholstery Tool
- F** Home & Car Detail Kit
- G** Hard Floor Hero™
- H** Wall Mount
- I** Accessory Bag

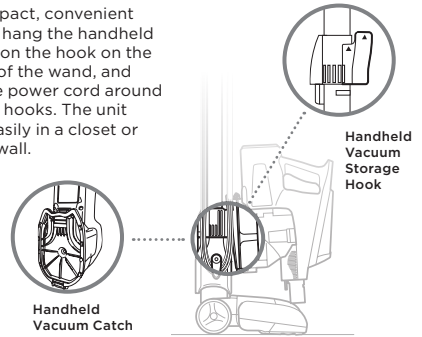
ASSEMBLY



STORAGE

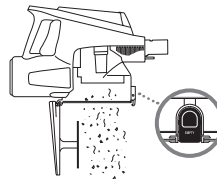
Onboard Hook

For compact, convenient storage, hang the handheld vacuum on the hook on the bottom of the wand, and wrap the power cord around the cord hooks. The unit stores easily in a closet or along a wall.



MAINTENANCE

Empty the dust cup every time debris reaches the MAX fill line.

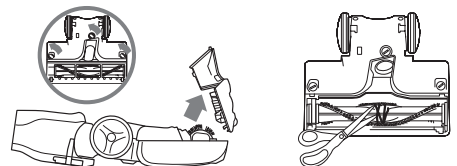


CAUTION:
Hand wash filters only with water to prevent damage from cleaning chemicals.

Allow ALL filters to air-dry completely before replacing them in the vacuum to prevent liquid from being drawn into electric parts.

Brushroll Maintenance

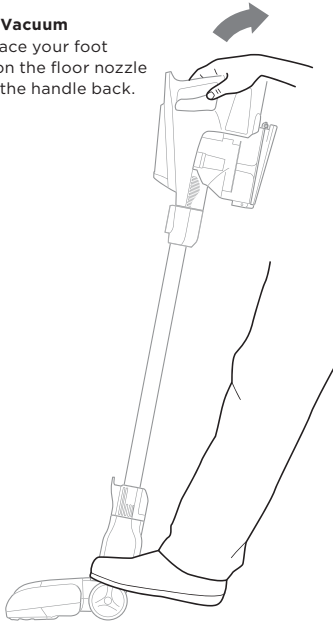
To access the brushroll, open the three locks on the bottom of the floor nozzle and lift off the cover. Remove any string, carpet fibers, or hair that may be wrapped around the brushroll. Loosen debris by cutting across the groove on the brushroll with a pair of scissors.



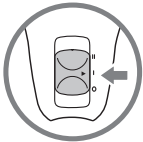
VERSATILE FLOOR-TO-CEILING CLEANING

FLOOR CLEANING

- 1 Plug In Vacuum**
Then place your foot gently on the floor nozzle and tilt the handle back.

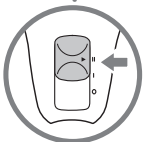


- 2 Choose Setting**
The Rocket® Ultra-Light Upright has a 2-speed power slider switch on the handle. Slide the power switch to the appropriate floor setting and start cleaning.



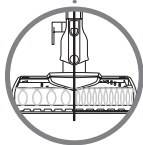
Setting I Gentle on bare floors and small area rugs.

The brushroll spins slowly to clean bare floors and small area rugs.



Setting II Deep-cleans carpets by removing embedded dirt.

The brushroll spins faster to pick up debris below the surface of your carpets.



NOTE:
For deep cleaning per ASTM F 608 (embedded dirt in carpet) please use Setting II, carpet mode.

For additional parts and accessories, visit sharkaccessories.com

ABOVE-FLOOR CLEANING

- 1** While holding the vacuum upright, push the Nozzle Release button and pull the wand up to disconnect it from the floor nozzle.

OR

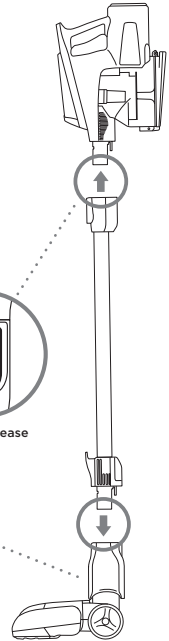
Press the Wand Release button on the top of the wand to disconnect it from the handheld vacuum.



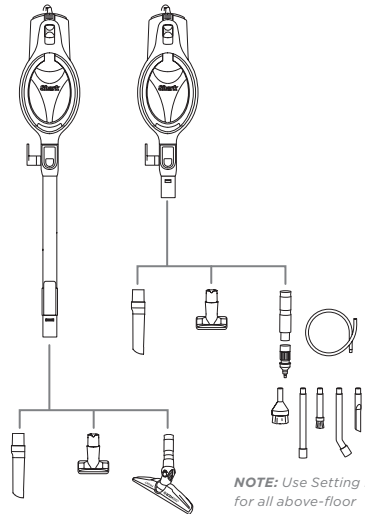
Wand Release



Floor Nozzle Release



- 2** Attach desired cleaning accessory.



NOTE: Use Setting I for all above-floor accessories.

For questions or to register your product, visit us online at sharkclean.com



@sharkcleaning