



Professional Steam Cleaner

OWNER'S MANUAL

Model SC410

110/120V., 60 Hz

1500/1780 W.



EURO-PRO Operating LLC
94 Main Mill Street, Door 16
Plattsburgh NY 12901
Tel.: 1 (800) 798-7398



1 YEAR LIMITED WARRANTY

EURO-PRO Operating LLC warrants this product to be free from defects in material and workmanship for a period of one (1) year from the date of purchase when utilized for normal household use by the original purchaser only. The attached Warranty Registration Card must be filled out and returned within 10 days of purchase. This is essential for your Warranty to be effective should any problem arise with this product.

Should any defect covered by the terms of the limited warranty be discovered within one year, **EURO-PRO** Operating LLC will repair or replace any defective part provided the unit is returned by the original purchaser, freight prepaid, to **EURO-PRO** Operating LLC, 94 Main Mill Street, Door 16, Plattsburgh, NY 12901. Proof of purchase date and \$14.95 for handling and return packing/shipping charges must be included.*

The liability of **EURO-PRO** Operating LLC is limited solely to the cost of the replacement parts or the complete unit at our option. **LABOUR CHARGES ARE NOT INCLUDED.**

This warranty does not cover normal wear of parts and does not apply to any unit that has been tampered with or used for commercial purposes. This Limited Warranty does not cover damage caused by misuse, negligent handling, or damage due to faulty packaging or mishandling in transit (by any common carrier).

This warranty is extended to the original purchaser of the unit and excludes all other legal and/or conventional warranties. The responsibility of **EURO-PRO** Operating LLC, if any, is limited to the specific obligations expressly assumed by it under the terms of the limited warranty. In no event is **EURO-PRO** Operating LLC liable for incidental or consequential damages of any nature whatsoever. Some States do not permit the exclusion or limitation of incidental or consequential damages, so the above may not apply to you.

This warranty gives you specific legal rights which vary from state to state.

PURCHASER _____

DATE OF PURCHASE _____

DEALER _____

*important: Carefully pack item to avoid damage in shipping. Be sure to attach tag to item before packing with your name, complete address and phone number with note giving purchase information, model number and what you believe is the problem with item. We recommend you insure the package (as damage in shipping is not covered by your warranty). Mark the outside of your package "ATTENTION CUSTOMER SERVICE". **We are constantly striving to improve our products, therefore the specifications contained herein are subject to change without notice.**



OWNERSHIP REGISTRATION CARD

Please complete and return within ten (10) days of purchase. The registration will enable us to contact you in the event a product defect is discovered. By returning this card you acknowledge to have read and understood the instructions for use, and warnings set forth in the accompanying instructions.

RETURN TO: **EURO-PRO** Operating LLC, 94 Main Mill Street, Door 16, Plattsburgh, N.Y. 12901

PURCHASER:

ADDRESS:

CITY: STATE/PROV:.....

DATE OF PURCHASE: MODEL: **SC410**

NAME AND ADDRESS OF DEALER:

IMPORTANT SAFEGUARDS

When using your **Professional Steam Cleaner**, basic safety precautions should always be observed, including the following:

1. Read all instructions before using Professional Steam Cleaner.
2. To protect against a risk of electric shock. Do not immerse any part of the system in water or other liquids.
3. The system should always be turned OFF before plugging into or unplugging from outlet. Never yank cord to disconnect from outlet; instead, grasp plug and pull to disconnect.
4. Do not allow cord to touch hot surfaces. Let the system cool completely before putting away or opening water tank (removing the safety cap). Wrap cord loosely around system when storing.
5. Always disconnect system from electrical outlet when filling with water or emptying and when not in use. Always turn the safety cap slowly when opening the water tank. This will allow any remaining steam to escape gradually.
6. Always make sure that there is no steam in the steam generator (water tank) before opening the safety cap. Follow instructions to release all remaining steam through the steam cleaner by pressing the steam release button. Unplug the unit and allow to cool before starting to open the safety cap. Always turn the cap slowly when opening the water tank to allow any remaining steam to escape gradually.
7. Do not operate the system with a damaged cord or plug, or if the steam cleaner or any other part of the system has been dropped or damaged. To avoid the risk of electric shock, do not disassemble or attempt to repair the Professional Steam Cleaner. Return the system to **EURO-PRO Operating LLC** (see warranty) for examination and repair. Incorrect re-assembly or repair can cause a risk of electrical shock or injury to persons when the Professional Steam Cleaner is used.
8. Close supervision is necessary for any appliance being used by or near children. Do not leave the system unattended while connected.
9. Burns can occur from touching hot metal parts, hot water or steam. Use caution when turning the system upside down as there may be hot water in the unit. Never direct steam at any person. The steam is very hot and can cause burns.
10. Do not operate in the presence of explosive and/or flammable fumes.
11. This appliance is intended only for household use. Follow all user instructions in this manual.
12. Never use any chemicals or substance other than tap water in the machine. Use of chemicals may damage the machine. Use of chemicals will automatically void your warranty.
13. Never direct steam towards electrical outlets.

To reduce the risk of fire, electric shock, or injury:


- Do not leave steam cleaner when plugged in. Turn off the switch and unplug the electrical cord when not in use and before servicing.
- Do not allow to be used as a toy. Close attention is necessary when used by children or near pets or plants.
- Use only as described in this manual. Use only manufacturer's recommended accessories.
- Do not pull cord, use cord as a handle, close a door on cord, or pull cord around sharp edges or corners. Keep cord away from heated surfaces.
- Do not use extension cords or outlets with inadequate current carrying capacity.
- Turn off all controls before unplugging from electrical outlet.
- Do not unplug by pulling on cord. To unplug, grasp the plug, not the cord.
- Do not handle plug or steam cleaner with wet hands or operate without shoes.
- Do not put any objects into openings. Do not use with any opening blocked.
- Store your steam cleaner indoors in a cool, dry area.
- Keep your work area well lighted.
- **Never turn the appliance over or on its side when using steam. Never direct steam towards people, animal or plants.**
- Do not immerse the steam cleaner into water or other liquids. Always unplug the power cord from the electrical socket when filling the steam cleaner.
- **Never put descaling, aromatic, alcoholic or detergent products into the steam cleaner, as this may damage it or make it unsafe for use.**


SAVE THESE INSTRUCTIONS

For Household Use Only

1. To avoid circuit overload, **do not** operate another appliance simultaneously on the same circuit as the Professional Steam Cleaner.
2. If an extension cord is absolutely necessary, an extension cord rated a minimum of 15 ampere, 14 gage cord should be used. Cords rated for less amperage may overheat. Care should be taken to arrange cord so that it cannot be pulled or tripped over.
3. **Do not** leave unattended when the system is connected to a power supply/electrical outlet.

SAVE THESE INSTRUCTIONS FOR HOUSEHOLD USE ONLY

 **WARNING:** This appliance is equipped with a grounded-type 3-wire cord (3-prong plug). This plug will only fit into an electrical outlet made for a 3-prong plug. This is a safety feature. If the plug should fail to fit the outlet, contact an electrician to replace the outlet. Do not attempt to defeat the safety purpose of the grounding pin, part of the 3-prong plug.

 **CAUTION:** Always drain condensed water from hose before use or if unit has been left idle for a period of time. To drain hose, direct nozzle into an appropriate container or sink and depress hand grip rigger. Once hose has been drained, normal use may be resumed. Never direct nozzle towards people, animals or plants.

Artificial Plants

Use the concentrator without a brush attached to blow off the dust and dirt.

Clothing

A vapor cleaning system is excellent for removing wrinkles from fabrics. Simply "vaporize" the surface from a distance (12"-18") The dry vapor removes wrinkles without leaving the fabric wet like ordinary fabric steamers do.

Nicotine and Tar

Nicotine and tar dissolves at high temperatures and becomes a light yellow oil that has the consistency of sewing machine oil. When the nicotine/tar film is touched by a hot terry cloth towel clipped over the floor brush, it immediately dissolves and flows into the towel. You can remove it from flat surfaces as fast as you can move the brush over the surface.

Removing Wax, Tar, Etc.

Many stains are only stuck on the surface of materials and can be easily and quickly removed by "blowing" excess material away from the surface from the side. This is accomplished by using the concentrator. Hold the terry cloth towel to the side to catch the loose residue as it is blown by the concentrator. **Note:** Always vacuum any loose residue off the surface before you apply vapor to it.

Other Uses

To clean bicycles, use the detail brush.

To clean equipment, use the detail brush, depending on the surface area. Finish by wiping down with a towel.

Hints

ALWAYS FINISH CLEANING BY WIPING DOWN THE CLEANED SURFACE WITH A TOWEL

The steam cleaner has many uses that have not been mentioned. This was meant only to give you a general idea of what can be achieved with the unit. However, the ways in which to use the attachments and brushes are in most cases universal. It is **most** helpful to always have a terry cloth towel or paper towel ready to use for removal of moisture and residue. 100% white cotton towels work best. You can clean the brushes with your steam cleaner. To clean the floor brush, hold at one end and use the concentrator to simply blow off dirt into the garbage can. When cleaning the detail brush, use a pair of pliers to hold and blow dirt as above or place in the basket of your dishwasher.

Note: Wipe with a towel immediately before the cleaned area dries. When cleaning the oven, use the detail brush to clean around the elements and drip trays. Use the detail brush for cracks, crevices, and hard to reach areas.

Refrigerator - Use the concentrator to blow away dirt in the ice machine and on door seals. The vapor will not dry out or crack the seals as chemicals often do. Can openers and other kitchen equipment can be easily cleaned with the detail brush to get into all the nooks and crannies. Mold stains around door gaskets can be removed with the detail brush.

To clean **microwaves** or **other small appliances** use the detail brush for small areas.

Note: When cleaning small electrical appliances always unplug them from outlet before cleaning.

To clean **counter tops**, use the floor brush with a terry cloth towel attached. For heavily soiled areas, use the brush without the terry cloth towel first in order to loosen the debris, then follow with a terry cloth towel attached to finish.

USAGE SUGGESTIONS FOR STEAM CLEANER cont.

Window, Glass Surfaces and Mirrors

Use the dual edge glass and tile squeegee. Work with the vapor jet on using the top to bottom movements. Use the squeegee with the vapor off to clear the water from the glass. To do this without leaving streaks, use lateral movements from the top to the bottom of the surface.

Fiberglass or Stainless Steel Surfaces

Use the floor brush or detail brush. Slowly move the brush over the surface to be cleaned. The vapor will emulsify the dirt and grease on the surface. Follow behind with a terry cloth towel over the brush to remove excess moisture and residue.

Tip: An old idea for polishing stainless steel is to wipe it down with seltzer soda water after it is cleaned.

Soap Scum

Soap scum dissolves almost immediately under a combination of heat and moisture. Rinse the surface with a small amount of water afterwards or go back over it once more with a clean terry cloth towel.

Note: Soap scum sometimes will develop a hard surface from waterborne minerals. If this is the case, use the floor brush with no towel first to break up this surface - or spray or wipe first with lemon, vinegar or seltzer soda water to soften the minerals.

Moving too slowly can dry out the soap scum and cause it to granulate on the surface. The surface will have a gritty feel. If this happens, apply vapor to the surface with the open brush again and re-clean.

Garden Furniture

Use any of the brushes depending on the surface area. Work quickly when cleaning resin outdoor furniture. Finish by wiping with a towel.

Blinds

Use the detail brush to clean blinds. Move the brush over the surface, allowing enough time for the vapor to penetrate. Work quickly on PVC blinds. Test for color fastness on fabric blinds before using. Finish by wiping with a towel.

Bathroom Areas

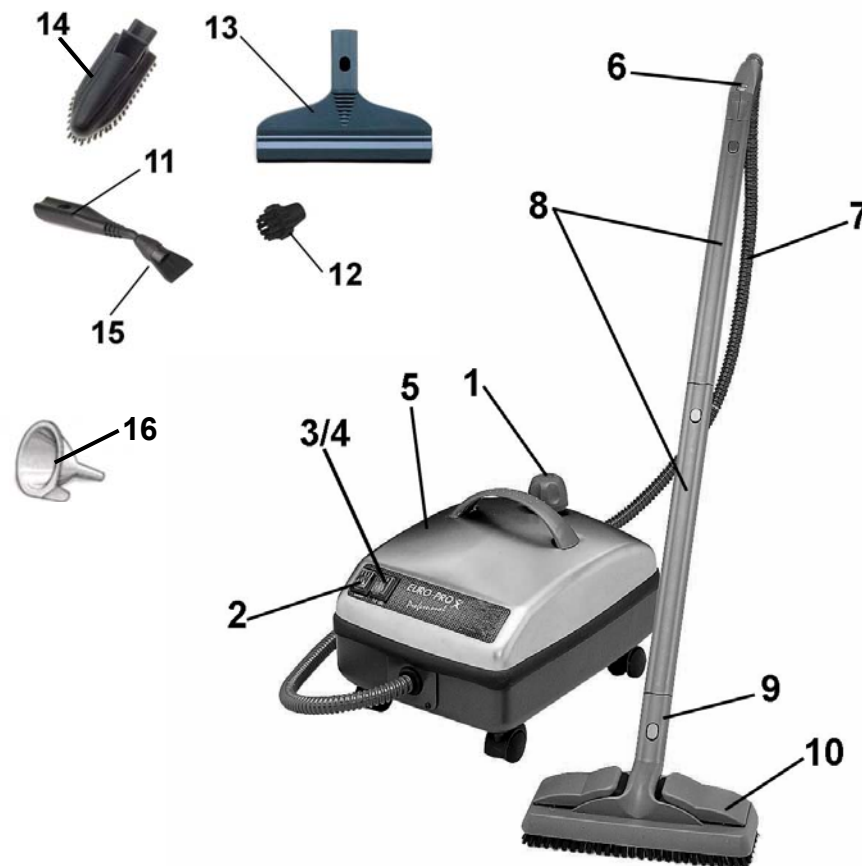
To clean the bathtub or shower area, use the detail brush for grout, shower door tracks, hard to get areas and heavily soiled areas. The dual edge window/tile squeegee will be the most efficient way to clean the rest of the area. Allow plenty of time for the heat to penetrate the surface. This is especially helpful in the shower area if there is tile or grout. Wipe with towel.

Removal of soap scum on tile, grout, and shower doors is also easier with the steam cleaner.

To clean sanitary fixtures, use the concentrator with or without detail brush. Use a terry cloth towel or paper towel to wipe up excess moisture and residue.

To clean the sink and faucets, use detail brush then finish by wiping with a towel.

GETTING TO KNOW YOUR PROFESSIONAL STEAM CLEANER



- | | |
|------------------------------|------------------------|
| 1. Safety Filler Cap | 9. Angle Adapter |
| 2. On/Off Switch | 10. Floor Brush |
| 3. Steam Ready Light (Amber) | 11. Steam Concentrator |
| 4. Add Water Light (Red) | 12. Detail Brush (x4) |
| 5. Main Unit | 13. Window Squeegee |
| 6. On/Off Steam Switch | 14. Triangular Brush |
| 7. Flexible Hose | 15. Wall Paper Scraper |
| 8. Extension Tubes (x2) | 16. Funnel |

Technical Specifications

Voltage:	110/120V., 60Hz.
Power:	1500/1780 Watts
Max Steam Pressure:	4 Bar (58 PSI)
Water Capacity:	2 US Quarts/Liters
Steam Generator:	18/10 Stainless Steel

OPERATING INSTRUCTIONS

Components

On/Off Switch: The unit is "On" when the switch is in the "Pushed down" position. The unit is "Off" when the switch is in its "Up" position.

Safety Fuller Cap: In order to open the Safety Filler Cap turn counter clockwise.

Caution: Read the instruction for "Filling the Water Tank" before opening the Safety Filler Cap.

Steam Ready Light (Amber): When this light is "On", it indicates that the steam is ready to use.

Important: This light will go "On" and "Off" during usage showing that the steam is being generated.

Add Water Light (Red): This light will go "on" when the water level is low.

Important: Before adding water, read the instructions for adding water.

Depending on the ambient room temperature, this light might go on for a short period during initial tank heating.

On/Off Steam Switch: Setting this switch to the "On" position will start the flow of steam.

Caution: The On/Off Steam Switch located on the handle must be in the "Off" position before attaching or disassembling accessories.

Caution: Read the instructions for "Filling the Water Tank" before opening the Safety Filler Cap. **Always depress hand grip steam trigger until all pressure/ steam has been vented from boiler.**

Caution: Always unplug before filling.

ALLOW UNIT TO COOL FOR FIFTEEN (15) MINUTES BEFORE REFILLING.

Important: Do **NOT** add cleaning solutions, scented perfumes, oils or any other chemicals to the water used in this appliance. **Use tap water or distilled/purified water if the tap water in your area is very hard.**

Filling Your Steam Cleaner With Water

IMPORTANT: Always insure that the unit is "UNPLUGGED" from the wall receptacle prior to initial filling or re-filling the water tank. **Never attempt to fill this unit under a water tap, always use the filling funnel provided.** Failure to follow these steps will cause the water tank to overflow and may pose an electrical safety hazard.

Step 1: Turn the safety filler cap counter clockwise until removed.

Step 2: Place Funnel in tank and add two quarts/liters of clean tap water. Do not overflow. Replace the Safety Filler Cap by turning clockwise. It is ok to use hot water. This reduces heating time.

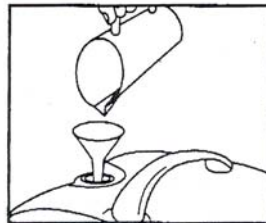
Step 3: Plug the machine into a standard 110/120 volt wall (3-prong) receptacle. Depress On/Off Switch to "ON" position.

Step 4: Allow approximately 10 minutes for vapor to reach its working temperature. When these have been reached, the Steam Ready Light will light. The machine is ready to operate.

Step 5: Add desired attachments. After attachments are in place, activate vapor flow by pressing the Steam On/Off Switch on the handle. Note: After you start using steam, the steam ready light will go out. If you stop the use for several minutes, the steam ready light will go back on.

Step 6: At the start, some water will come out from the nozzle of the attachment. This is unheated water in the hose.

Step 7: A. Depending upon the ambient temperature, the add water light indicator might light up during the initial tank heating. Go ahead and vent the hose and start use. After approximately 2 to 3 minutes of use, this light will go out. Continue normal use. B. The Red Indicator functions as a low water warning. When your vapor pressure significantly decreases and the Add Water Light will light up, release all pressure through the nozzle by pressing Steam On/Off Switch to "On" and allow the machine to cool. To refill, repeat steps #1 through #6.



USAGE SUGGESTIONS FOR STEAM CLEANER

Wood, Vinyl and Marble Floors

Use the floor brush with a terry cloth attached. Move the brush across the floor as if you are mopping. When the towel is soiled, allow to cool, then turn the towel over or replace it with a clean towel. If you are working on a very dirty area, you can move the brush over the area slowly, several times. If it is a wood floor, move fast to avoid heat or moisture buildup in the wood. By cleaning with the towel over the brush, you will not affect the shine on the floor.

To Strip Wax: Use floor brush for open areas; detail brush for corners or tight areas - no towel, slow strokes. Work a small area at a time - remove the emulsified wax from the floor. When all of the wax has been stripped, immediately clean the floor and brushes with water before residue has a chance to harden on them. Go back over the stripped area with the floor brush with a towel to remove any remaining residue before waxing.

To Clean Waxed Floors: Wrap clean towel around the floor brush, brush quickly. This will cause the dirt to be removed but not the wax.

Vinyl Floors: Do not allow heat to buildup in any kind of vinyl, since it can soften it enough to affect its texture. Work fast on vinyl.

Tile Floors: Use the concentrator with the detail brush attached to an extension. Have the floor brush with cloth attached ready as well. Clean the grout between the tiles with the detail brush. Remove the detail brush and attach the floor brush, move the brush across the floor to clean the tile and remove excess moisture and residue. For areas of tile that are very dirty, remove the towel and agitate with the brush. Do not let the area dry before you wipe with a towel.

Spot Cleaning (Carpets)

Use the concentrator with or without the detail brush. Move slowly over the soiled area, allowing the steam to penetrate. Agitate with detail brush or clean towel. Dab the spot with the towel (do not rub). Repeat as necessary to remove stain. Vacuum only after the carpet has completely dried.

Always test color fastness of carpet in an inconspicuous area before cleaning. If your Steam Cleaner fails to remove stubborn stains a commercially available carpet shampoo may be required.

Do NOT add cleaning solutions, scented perfumes, oils or any other chemicals to the water used in this appliance as this may damage the unit or make it unsafe for use.

Upholstery

Use the floor brush attached directly to the hand grip with a clean white terry cloth towel. Use fast, light strokes, avoid getting the fabric wet. Be patient with stubborn spots; work on a spot gently for no more than a minute at a time, then wait five minutes for the area to dry and repeat. Use circular movements or back-and-forth and side-to-side movements to get all sides of surface fibers then blot with a towel. Finish with a brushing in one direction that will give the fabric a uniform appearance.

CAUTION: Always determine the color-fastness of any fabric-especially with reds or blues - by taking a clean, moist, warm towel and gently rubbing a small area as far down on the back or other out of the way place on the furniture as possible. If color comes off on the towel, you may need to have the piece dry cleaned.

OPERATING INSTRUCTIONS

Attaching the Accessories to the Flexible Steam Hose

Glass & Tile Squeegee

This attachment is very useful for cleaning large windows, plastic material, ceramic, tiled or marble surfaces.

To use: Connect the tile squeegee to the hand grip or use with extension tube for hard to reach surfaces.

Apply steam abundantly, rub with the soft spongy edge, then remove excess water and dirt with the glass wiping edge.



IMPORTANT: When cleaning windows, always avoid any sudden changes in temperature to prevent glass breakage or cracks.

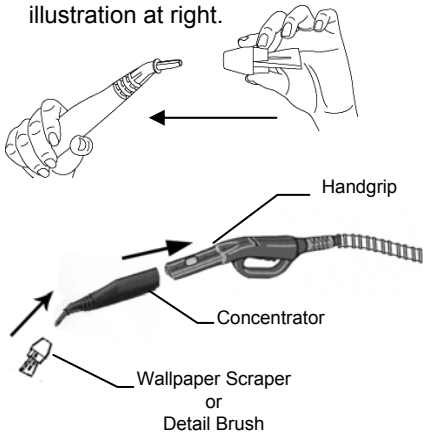
Steam Concentrator

Attach the steam concentrator to the handgrip or to the extension tubes. Then attach the detail brushes to the concentrator.



Wall Paper Scraper

1. Attach the steam concentrator to the flexible hose, push it in until the locking button on the deluxe hose clicks in place with the hole on the steam concentrator. See illustration at right.



3. To attach the wallpaper scraper to the concentrator, just push it in to the end of the concentrator.

Detail Brush

It is best for cleaning grout in-between the tiles, ceramic and marble.

To use: Attach the detail brush on to the end of the concentrator, which then may be used directly on the hand grip or with extension tubes



Tips On How To Use Your System

Water

- Use tap water for all your cleaning needs.
- However, if you live in an area with hard water, use de-mineralized / distilled water when steaming light colored fabrics to eliminate the possibility of hard water stains.

IMPORTANT: Do **NOT** add cleaning solutions, scented perfumes, oils or any other chemicals to the water used in this appliance. **Use tap water or distilled/purified water if the tap water in your area is very hard.**

WARNING: A towel wrapped around the brush can become hot enough to burn. Make sure that you let the towel cool off for 5 minutes before touching it.

Using Towels

- For best results use 100% cotton white terry cloth towels.
- Use correct size of towel to allow you to wrap the towel around the brushes and clip it under the spring loaded cloth holder.
- The purpose of using a towel is to absorb moisture and dirt being removed. Always use dry towels. A wet towel will smear the dirt.
- Wash towels with strong detergent and bleach.
- Using scented fabric softener while washing the towels will cause the scent to be released into the air when using the towels with your steam system.

Efficient Work

- For vertical surfaces, wipe with a towel from the top down, in this way the dirty water will not soil surfaces already cleaned.
- Avoid changing brushes back and forth while cleaning.
- Start with the smallest brush to clean tight spots and corners first.
- Use a towel to wipe dirt as soon as possible, otherwise it will dry and re-adhere to the surface.

OPERATING INSTRUCTIONS

If the “Add Water” Light Turns “On” During Cleaning, Indicating Low Water Level, Follow the Instructions Below to Refill the Steam Generator.

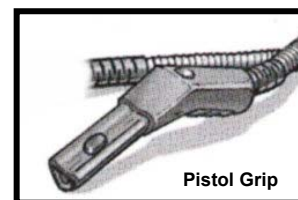
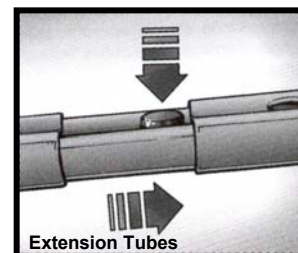
- Step 8. Push the On/Off Switch to its “Off” position.
- Step 9. Push the Steam On/Off Switch to its “On” position to release all the steam left in the steam generator, then turn the switch to “Off” position.
- Step 10. Unplug the power cord from the wall socket. Let the unit cool for a minimum 5 minutes before refilling with water.
- Step 11. Follow instructions to fill the Steam Generator as shown in Step #1.

Caution: When refilling the machine while it is still hot, the first drops of water might bubble up.

Using Your Accessories

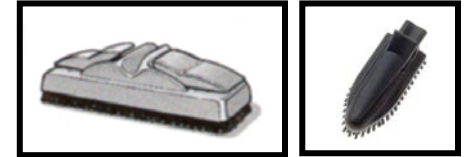
Attaching the extension tubes to the Pistol Grip (with On/Off Steam Control) and to the other accessories.

To insert the extension pipes one in the other, in the flexible pipe grip and in the attachments, press the knob ensuring that it fits into the hole. To disconnect, repeat this operation by pressing the knob and pulling on the two parts.



To attach the Angle Adapter to the floor brush or the triangular brush:

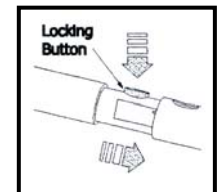
Hold the brush with its bristles pointing down in your left hand. With the “Angle Adapter” pointing downward, insert it into the hole in the back of the brush, then turn the “Angle Adapter” 180°.



Angle Adapter

Using the Floor Brush

- Step 1: Connect one of the extension tubes to the hand grip on the flexible steam hose. To attach the extension tubes one onto the other or onto the hand grip, press the locking button ensuring that it fits into the hole. To disconnect, repeat the operation by pressing the locking button and pulling the two sections apart.



NOTE: Fit floor brush with the angle adapter on to the extension tube.

OPERATING INSTRUCTIONS

Step 2: If the angle adapter is not attached to the floor brush, hold the brush with its bristles up in your left hand. With the angle adapter pointing downward, insert it into the hole in the back of the brush, then turn the floor brush 180°.

Step 3: Insert the electrical power cord into the wall outlet. Heating time is approximately 8-10 minutes with cold water. Filling the steam generator with hot water will shorten the heat up time.

Attaching a Towel to the Floor Brush

100% white terry cloth towel can be fitted on this brush, so as to absorb the dirt and protect delicate surfaces.

Important: Please note that bristles may break through thin towels. We recommend that two (2) towels, laid one on top of the other be used. This will ensure that the brush bristles do not break through and that the towels will be sufficiently absorbent and retain as much dirt as possible.

Very Important: When installing the towels to the floor brush, ensure that the towels do not cover the front and the back of the brush. (See fig. E)

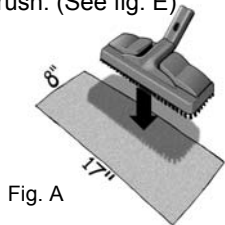


Fig. A

1. Prepare white terry cloth towel: size 8" x 17" as shown in Fig. A.
2. Place the brush on top of the towel.

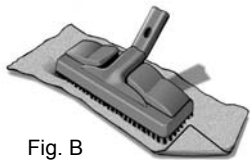


Fig. B

3. Fold the towel as shown in Fig. B

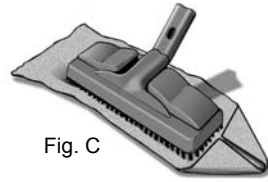


Fig. C

4. Fold the other side of the towel as shown in Fig. C.

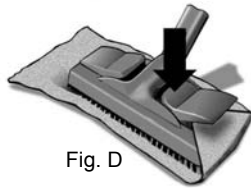


Fig. D

5. Place the corner under the cloth holder as shown in Fig. D.

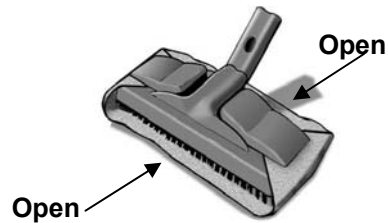


Fig. E

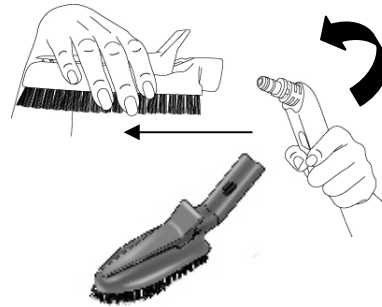
6. Place the towel around the brush, and repeat folding the towel as shown in Fig. E. When folding the towel, leave some slack. **Do not** pull tightly around the brush, leave some looseness.

OPERATING INSTRUCTIONS

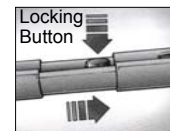
WARNING: Always insure the unit is "UNPLUGGED" from the wall receptacle prior to attaching or removing accessories.

Using Your Steam Cleaner with Triangular Brush

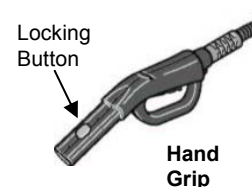
To attach the triangular brush to the angle adapter, hold angle adapter in your right hand and the brush in your left. Insert the angle adapter into the triangular brush and turn 180° to lock in place. See illustrations below.



Step 1: The triangle brush w/angle adaptor connects either directly to the handgrip or may be used with the extension tubes. To connect the extension tubes to the hand grip attach the extension tubes one onto the other and then onto the hand grip. (See illustrations.) To disconnect, reverse the operation by pressing the locking button and pulling the two sections apart.



Extension Tubes



Hand Grip

Attaching a Towel to the Triangular Brush

100% white terry cloth towel can be fitted on this brush, so as to absorb the dirt and protect delicate surfaces.

Important: Please note that bristles may break through thin towels. We recommend that two (2) towels, laid one on top of the other be used. This will ensure that the brush bristles do not break through and that the towels will be sufficiently absorbent and retain as much dirt as possible.

Very Important: When installing the towels to the triangular brush, ensure that the towels do not cover the front and the back of the brush. (See Fig. D)

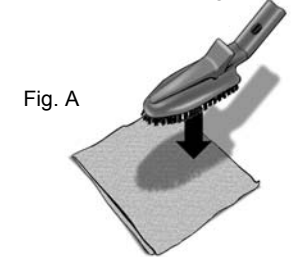


Fig. A

1. Prepare white terry cloth towel: size 8" x 17" as shown in Fig. A.
2. Place the brush on top of the towel



Fig. B

3. Fold the towel as shown in Fig. B

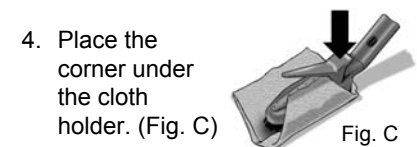


Fig. C

4. Place the corner under the cloth holder. (Fig. C)

5. Fold the other side of the towel in the same way and place the corner under the cloth holder. (Fig. D).



Fig. D