

Please be sure to read the enclosed Shark® Owner's Guide prior to using your unit.

Shark 3DCOMPLETE™

CORDLESS HARD FLOOR CLEANER WITH DISPOSABLE PADS

QUICK START GUIDE

WHAT'S INSIDE

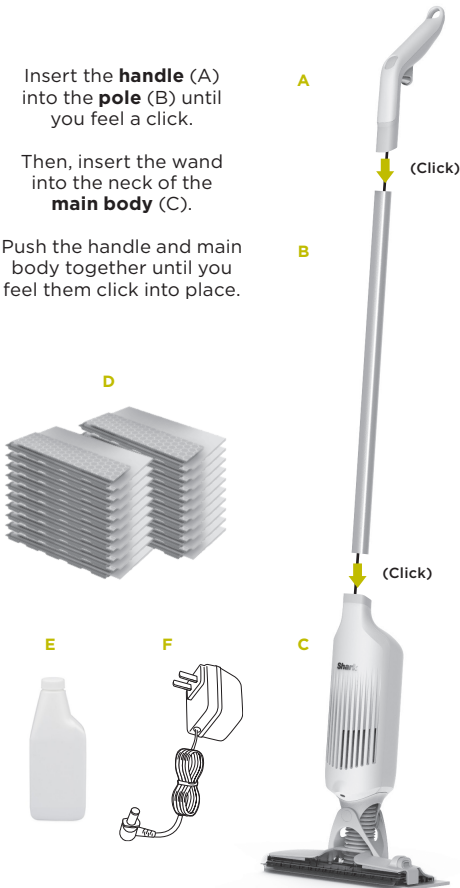
- A** Handle
- B** Pole
- C** Main Body
- D** 20 3DPICKUP Pads
- E** 3DPICKUP Multi-Surface Cleanser
- F** Charger

ASSEMBLY

Insert the **handle (A)** into the **pole (B)** until you feel a click.

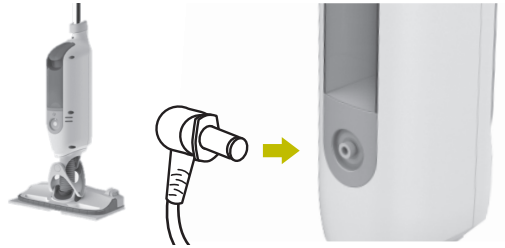
Then, insert the wand into the neck of the **main body (C)**.

Push the handle and main body together until you feel them click into place.



NOTE: For proper operation, ensure all parts are firmly CLICKED into place.

CHARGING



Plug the **charger** into an electrical outlet, then insert the charger plug into the port on the back of the main body. The unit will begin charging.

As the unit charges, the **green indicator light** will **pulse** slowly. When charging is complete, the indicator light will illuminate **solid green**. After 10 seconds of inactivity, the light will turn off on its own to conserve energy.

NOTE: The main unit comes with a partial charge. For maximum runtime, charge fully before use (approximately 2.5 hours). Leaving the unit plugged in will not damage battery life.

FILLING THE RESERVOIR



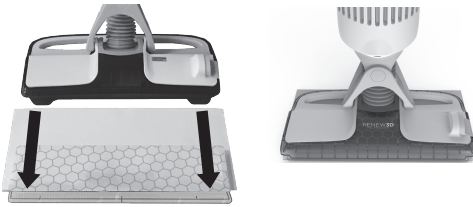
Lift the **reservoir lid** and press it up until it clicks into locked open position. Empty 12 oz bottle into reservoir.

NOTE: When filling the reservoir, always hold the main unit upright to prevent spills.

Never fill the reservoir when the unit is charging.

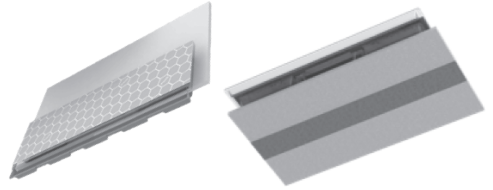
4 EASY STEPS TO CLEANING

ATTACHING THE PAD



Place the **pad** on the floor with the **scrubbing strip** down. Align the tabs on the bottom of the cleaner head with the indentations in the plastic bumper at the top of the pad. Holding the unit by the handle, press the cleaner head down until the pad clicks into place.

USING THE 3DPICKUP™ PAD



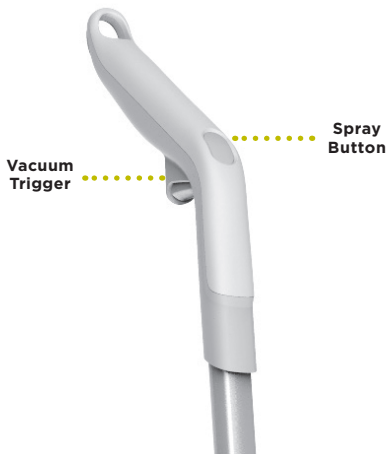
For Best Results: Vacuum First, Then Mop

Use the **pad** for both wet and dry cleaning.

First, use the **vacuum** to remove debris, then spray the **cleaning solution** to wet-clean.

NOTE: Do not use the unit unless the pad is attached. Using the unit without a pad may result in damage to the product or your flooring.

DRY AND WET CLEANING



Spray Button

Press and hold the spray button on top of handle to dispense cleaning solution through the spray nozzle.

Vacuum Trigger

Pull the trigger and hold it in to run vacuum motor and collect debris.

NOTE: Pads are intended to be used for a maximum of 325 sq. ft. (up to 3 rooms.)

For best results, replace the pad after each use.

NO-TOUCH PAD RELEASE



Dispose of dirty pads by releasing them directly into the trash.

To detach the pad, press the release button on the side of the cleaner head.

NOTE: For your current testing, please place used pads into the Ziploc® bags provided.

For additional parts and accessories, visit sharkaccessories.com

For questions or to register your product, visit us online at sharkclean.com



@sharkcleaning