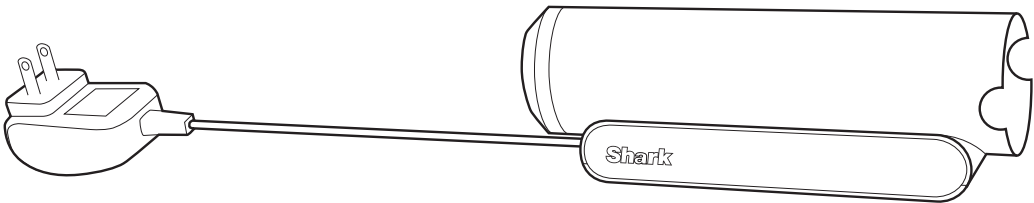


Shark WANDVAC™ SYSTEM

Battery Charging Sleeve

WS630 Series

OWNER'S GUIDE



IMPORTANT SAFETY INSTRUCTIONS

FOR HOUSEHOLD USE ONLY • PLEASE READ ALL INSTRUCTIONS BEFORE USING THE BATTERY CHARGING SLEEVE.

If the charging cord plug does not fit fully into the outlet, reverse the plug. If it still does not fit, contact a qualified electrician. DO NOT force into outlet or try to modify to fit.

To reduce the risk of shock and unintended operation, turn off power and remove the battery before servicing.

⚠ WARNING

To reduce the risk of fire, electric shock, injury, or property damage:

1. The battery is the power source for the vacuum. Carefully read and follow all charging instructions.
2. Use only with Shark battery pack XSBT330.
3. Keep the battery away from all metal objects such as paper clips, coins, keys, nails, or screws. Shorting the battery terminals increases the risk of fire or burns.
4. Under abusive conditions, liquid may be ejected from the battery. Avoid contact with this liquid, as it may cause irritation or burns. If contact occurs, flush with water. If liquid contacts eyes, seek medical help.
5. Battery should not be stored at temperatures below 37.4°F (3°C) or above 104°F (40°C) to maintain long-term battery life.
6. **DO NOT** charge battery at temperatures below 40°F (5°C) or above 104°F (40°C).
7. Store the appliance indoors. **DO NOT** use or store it below 37.4°F (3°C). Ensure the appliance is at room temperature before operating.
8. **DO NOT** expose the battery to fire or temperatures above 265°F (130°C) as it may cause explosion.

BATTERY REMOVAL AND DISPOSAL

This product uses a lithium-ion rechargeable and recyclable battery. When the battery no longer holds a charge, it should be removed from the vacuum and recycled. **DO NOT** incinerate or compost the battery.

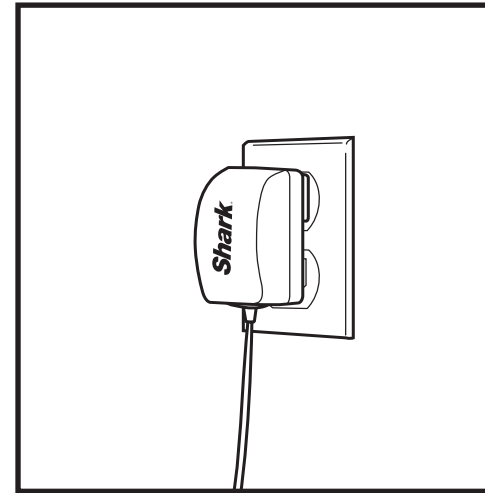
When your lithium-ion battery needs to be replaced, dispose of it or recycle it in accordance with local ordinances or regulations. In some areas, it is illegal to place spent lithium-ion batteries in the trash or in a municipal solid waste stream. Return spent battery to an authorized recycling center or to retailer for recycling. Contact your local recycling center for information on where to drop off the spent battery.

The RBRC™ (Rechargeable Battery Recycling Corporation) seal on the lithium-ion battery indicates that the costs to recycle the battery at the end of its useful life have already been paid by SharkNinja. In some areas, it is illegal to place spent lithium-ion batteries in the trash or municipal solid waste stream and the RBRC program provides an environmentally conscious alternative.

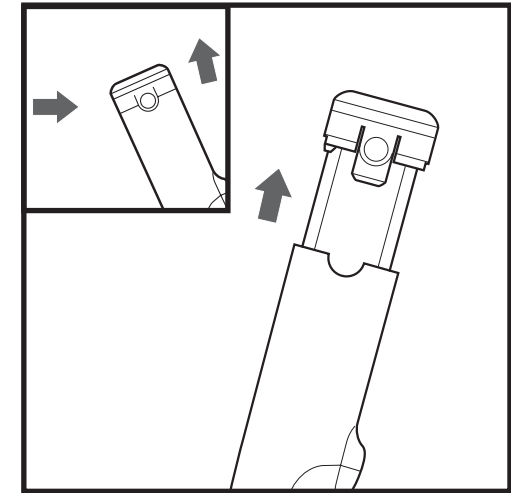
RBRC, in cooperation with SharkNinja and other battery users, has established programs in the United States and Canada to facilitate the collection of spent lithium-ion batteries. Help protect our environment and conserve natural resources by returning the spent lithium-ion battery to an authorized SharkNinja service center or to your local retailer for recycling. You may also contact your local recycling center for information on where to drop off the spent battery, or call 1-800-798-7398.

SAVE THESE INSTRUCTIONS

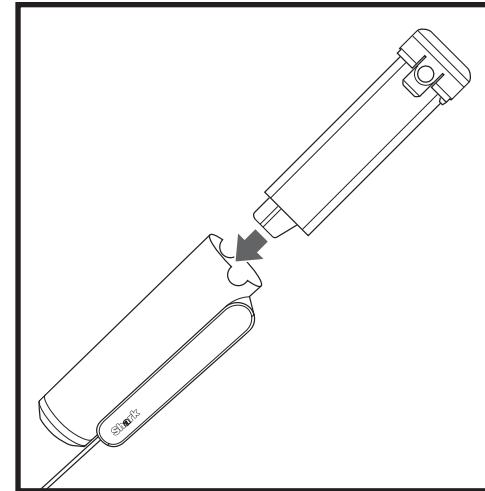
USING THE CHARGING SLEEVE



To use the WANDVAC™ System **Battery Charging Sleeve**, first plug the adaptor into a wall outlet.



To remove the battery from the hand vacuum, press the release tabs on the battery cap and slide the battery out.



Slide the battery into the charging sleeve until it **clicks** into place. During charging, the indicator light will pulse white. When the battery reaches a full charge, the light will illuminate solid white, then shut off after ten minutes.

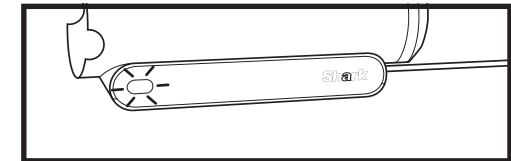
TROUBLESHOOTING

Indicator light on Battery Charging Sleeve is blinking white.

- Overcurrent charge to unit.
- If additional battery is available, try charging it.
- If problem persists, contact Customer Service at 1-800-798-7398.

Indicator light on Battery Charging Sleeve remains off.

- Contact Customer Service at 1-800-798-7398.



TECHNICAL SPECIFICATIONS

Voltage: 13.3V



PLEASE READ CAREFULLY AND KEEP FOR FUTURE REFERENCE.

This Owner's Guide is designed to help you get a complete understanding of your new Shark® WANDVAC™ System Battery Charging Sleeve.

SharkNinja Operating LLC
US: Needham, MA 02494
CAN: Ville St-Laurent, QC H4S 1A7
1-800-798-7398
sharkclean.com

Illustrations may differ from actual product. We are constantly striving to improve our products; therefore the specifications contained herein are subject to change without notice.

For SharkNinja U.S. Patent information, visit sharkninja.com/uspatents

© 2020 SharkNinja Operating LLC. SHARK is a registered trademark of SharkNinja Operating LLC. WANDVAC is a trademark of SharkNinja Operating LLC. RBRC is a trademark of Rechargeable Battery Recycling Corporation.

WS630Series_IB_BattSleeve_MP_Mv8
PRINTED IN CHINA



@sharkcleaning