

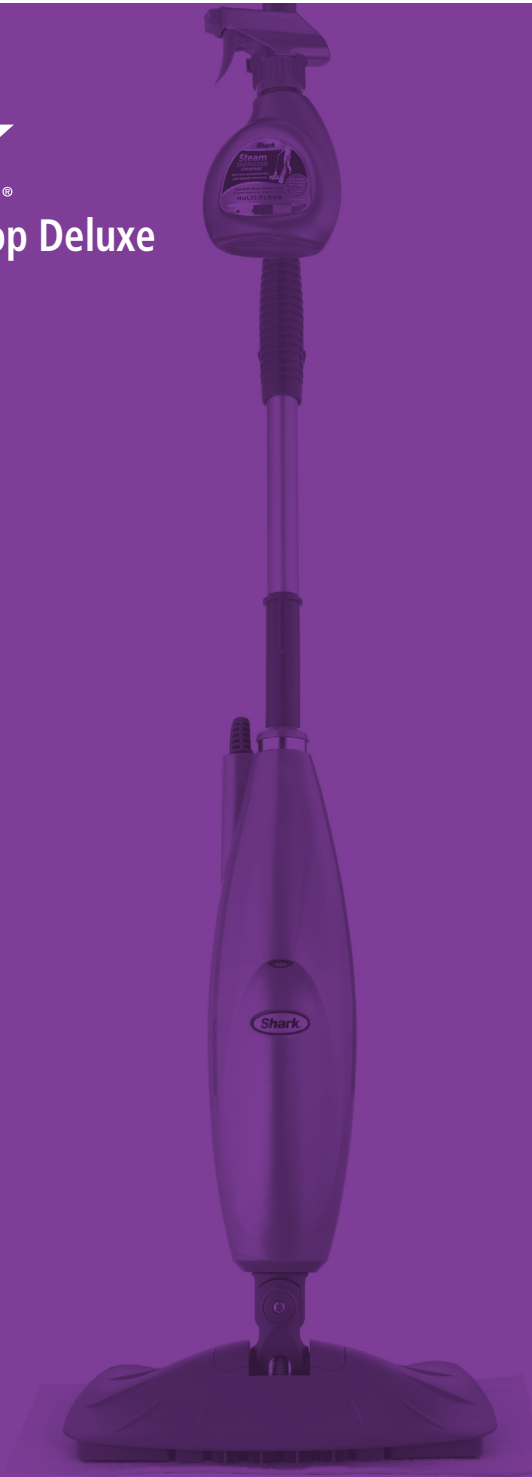


Shark®

Easy Spray™ Steam Mop Deluxe

SK140

OWNER'S GUIDE



WWW.SHARKCLEAN.COM



IMPORTANT SAFETY INSTRUCTIONS

For Household Use Only

WHEN USING YOUR SHARK EASY SPRAY™ STEAM MOP DELUXE, BASIC SAFETY PRECAUTIONS SHOULD ALWAYS BE FOLLOWED, INCLUDING THE FOLLOWING:

WARNING: TO REDUCE THE RISK OF FIRE, ELECTRIC SHOCK OR INJURY READ ALL INSTRUCTIONS BEFORE USING YOUR SHARK EASY SPRAY™ STEAM MOP DELUXE.



DANGER OF SCALDING.

Please use caution when using the steam mop. The steam emitted from the openings is very hot.

POLARIZED PLUG:

TO REDUCE THE RISK OF ELECTRIC SHOCK, this appliance has a polarized plug (one blade is wider than the other). As a safety feature, this plug will fit into a polarized outlet only one way. If the plug does not fit fully into the outlet, reverse the plug. If it still does not fit, contact a qualified electrician. **Do not attempt to defeat this safety feature.**

! CAUTION:

Keep all **Shark®** branded cleaners out of the reach of children.

Eye irritant. Should some of the **Shark®** branded cleaners be rubbed or splashed into the eyes, wash out thoroughly with water. If irritation continues, contact a physician.

In case of ingestion, drink 16 FL. oz. (2 cups) of water.

WARNING:

TO REDUCE THE RISK OF FIRE, ELECTRIC SHOCK OR INJURY:

1. Use the system only for its intended use.
2. **DO NOT** use outdoors.
3. **DO NOT** leave the appliance unattended when plugged in. Always unplug the power cord from the electrical outlet when not in use and before servicing.
4. **DO NOT** allow the appliance to be used as a toy. Close attention is necessary when used by or near children, pets or plants.
5. **CAUTION - Shock Hazard.** To provide continued protection against shock, disconnect from power supply when not in use.
6. Use only as described in this manual.
7. Use only manufacturer's recommended accessories.
8. **DO NOT** use with damaged cord or plug. If the appliance is not working as it should, has been dropped, damaged, left outdoors, or dropped into water, return the appliance to EURO-PRO Operating LLC for examination and repair. Incorrect re-assembly or repair can cause a risk of electrical shock or injury to persons when the appliance is used.
9. To protect against a risk of electric shock, **DO NOT** immerse the steam mop into water or any other liquids.
10. **DO NOT** handle plug or steam mop with wet hands or operate appliance without shoes.
11. **DO NOT** pull or carry by power cord, use power cord as handle, close a door on the power cord, or pull the power cord around sharp edges or corners. Keep power cord away from heated surfaces.



TOLL FREE: 1-800-798-7398



12. **DO NOT** unplug by pulling on power cord. To unplug, grasp the plug not the power cord. Do not use extension cords or outlets with inadequate current carrying capacity.
13. **DO NOT** put any objects into openings. Do not use with any opening blocked.
14. **DO NOT** put hands or feet under the steam mop. Unit gets very hot.
15. Use **ONLY** on flat, stable horizontal surfaces. Do not use on walls, counters, windows, chairs or tables.
16. **DO NOT** use on leather, wax polished furniture or floors, synthetic fabrics, velvet or other delicate, steam sensitive materials.
17. **DO NOT** use for space heating purposes.
18. **DO NOT** add cleaning solutions, scented perfumes, oils or any other chemicals to the water used in this appliance as this may damage the unit or make it unsafe for use. If you live in a hard water area, we recommend using distilled water in your steam mop.
19. When in use, NEVER turn the appliance over or on its side. **NEVER DIRECT STEAM TOWARDS PEOPLE, ANIMALS OR PLANTS.**
20. Carefully remove the SaniFiber™ disposable pad immediately after you have unplugged and allowed the product to cool.
21. When cleaning the steam mop, unplug the power cord from the electrical outlet and clean with a dry or damp cloth. Do not pour water or use alcohol, benzene or paint thinner on the unit.
22. To reduce the risk of fire, **DO NOT** use a flammable or combustible liquid to clean a floor.
23. Extreme caution should be exercised when using this appliance to clean stairs.
24. Never use steam mop without a SaniFiber™ disposable pad attached.
25. Keep your work area well lit.
26. Store steam mop indoors in a cool, dry place.
27. To avoid circuit overload, do not operate another appliance on the same socket (circuit) as the steam cleaner.
28. If an extension cord is absolutely necessary, an extension cord rated a minimum of 15 ampere, 14 gage cord should be used. Cords rated for less amperage may overheat. Care should be taken to arrange cord so that it cannot be pulled or tripped over.
29. **DO NOT** leave unattended when the system is connected to a power supply or electrical outlet. Turn off all controls before unplugging the unit.
30. **DO NOT** store unit with a damp or wet SaniFiber™ disposable pad attached. Never leave the steam mop in one spot on any surface for any period of time with a damp or wet SaniFiber™ disposable pad attached as this will damage your floors.



WARNING: Your steam mop is designed to clean hard floor surfaces that will withstand high heat. Do not use on unsealed wood or unglazed ceramic floors. On surfaces that have been treated with wax or some no wax floors, the sheen may be removed by the heat and steam action. It is always recommended to test an isolated area of the surface to be cleaned before proceeding. We also recommend that you check the use and care instructions from the floor manufacturer.

SAVE THESE INSTRUCTIONS



This manual covers model number:

SK140 11

TECHNICAL SPECIFICATIONS

Voltage: 120V., 60Hz.

Power: 1550 Watts

Water
Capacity: 250 ml (8 oz.)

Euro-Pro, Shark, SaniFiber, Easy Spray and Steam Energized are trademarks of Euro-Pro Operating LLC. All other brand names may be trademarks of their respective owners.



TOLL FREE: 1-800-798-7398



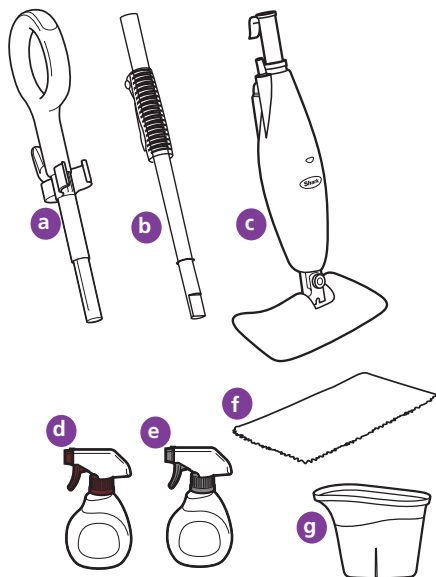
Contents

Thank you for
purchasing the
**SHARK EASY
SPRAY™ STEAM
MOP DELUXE.**

Getting Started	2
Using Your Easy Spray™ Steam Mop Deluxe.....	6
Using the Steam Energized™ Cleanser	7
Storage and Care of Your Spray™ Steam Mop Deluxe	8
Ordering Replacement Parts.....	9
Troubleshooting	10
Warranty and Registration	11

Getting Started

When assembling your steam mop there may be a little water in or around the water tank. This is because we test all our steam mops 100% before you buy them, so you get a quality Shark Easy Spray™ Steam Mop Deluxe.



FIRST THINGS FIRST, YOU NEED TO KNOW WHAT'S IN THE BOX YOU JUST OPENED:

- a Upper Extension Tube with clip
- b Lower Extension Tube (Telescopic)
- c Steam Mop Base
- d **Shark** Steam Energized™ Multi-Floor Cleanser
- e **Shark** Steam Energized™ Wood Floor Cleanser
- f SaniFiber™ Disposable Pad (s)
- g Filling Flask

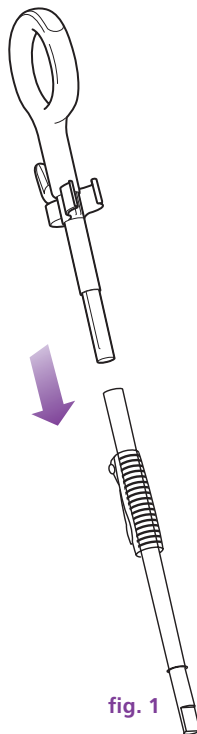
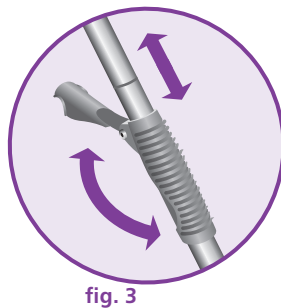
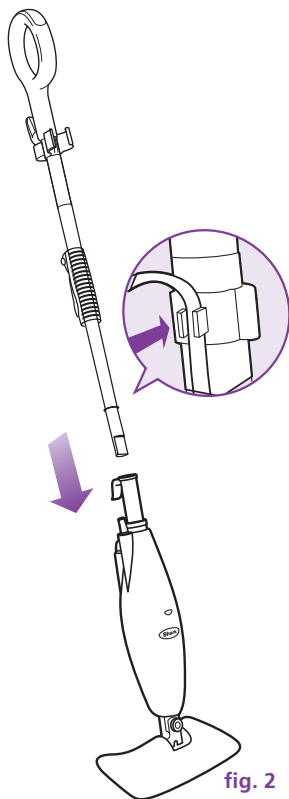



fig. 1


ASSEMBLY


- 1 Remove all the parts from the package. Verify all the listed parts are included.
- 2 Slide the upper extension tube (the tube with the handle) into the lower extension tube (the short tube). Push the two extension tubes together until you hear it click into place. (**fig. 1**)



- 3 Insert the assembled handle piece into the steam mop base. Push the tube base together until you hear a click. (fig. 2)
- 4 For your comfort, you can adjust the height of the mop. Just lift the latch on the tube 90 degrees to the open position. Holding the handle, extend the tube to the desired height and then close the latch to the locked position. (fig. 3)

 **QUICK TIP:** For easier pushing and pulling, extend the handle length.

 **IMPORTANT:** Never use the Easy Spray™ Steam Mop Deluxe without attaching a SaniFiber™ disposable pad to avoid damage to your floor and mop.

 **IMPORTANT:** Do not use on unsealed wood or unglazed ceramic floors. On surfaces that have been treated with wax or some no wax floors, the sheen may be removed by the heat and steam action. It is always recommended to test an isolated area of the surface to be cleaned before proceeding. We recommend that you check the use and care instructions from the floor manufacturer.



Getting Started

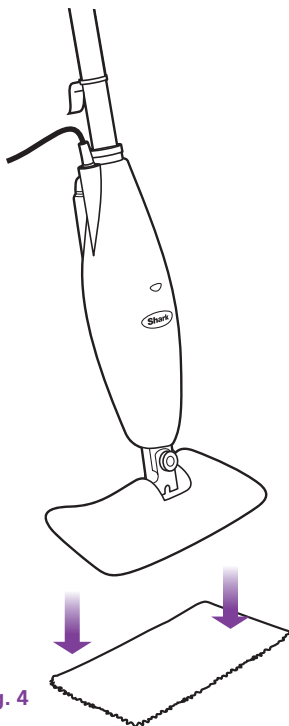


fig. 4

ATTACHING THE SANIFIBER™ DISPOSABLE PAD

- 1 Place the SaniFiber™ disposable pad on the floor with the logo side facing up. Place the Easy Spray™ Steam Mop Deluxe on the top of the pad to attach. (fig. 4)

⚠ IMPORTANT: Only add water to the tank. Chemicals or cleaning solutions may be unsafe or cause damage.

⚠ IMPORTANT: Please wait 3-5 minutes for your Easy Spray™ Steam Mop Deluxe to cool off before removing the SaniFiber™ disposable pad.

Replacement SaniFiber™ disposable pads are available at www.sharkclean.com or by calling **1-800-798-7398**.



Calcium and mineral deposits can build up and impact the performance of your steam mop over time. To extend the life of your product we recommend that you use distilled water or Shark®'s Water Filtration Bottle. Visit www.sharkclean.com to order.

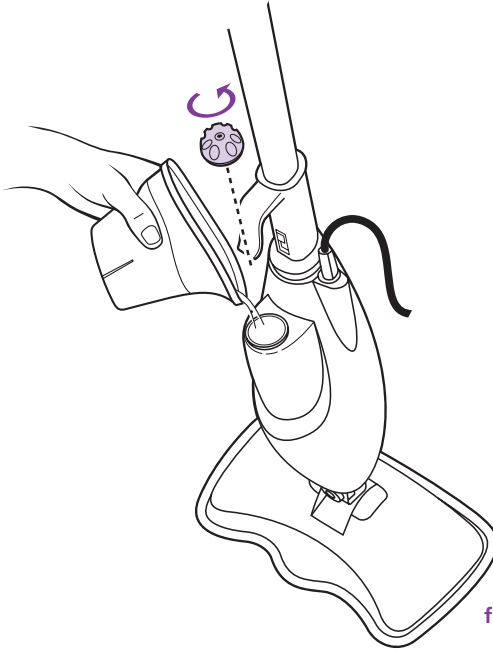


fig. 5

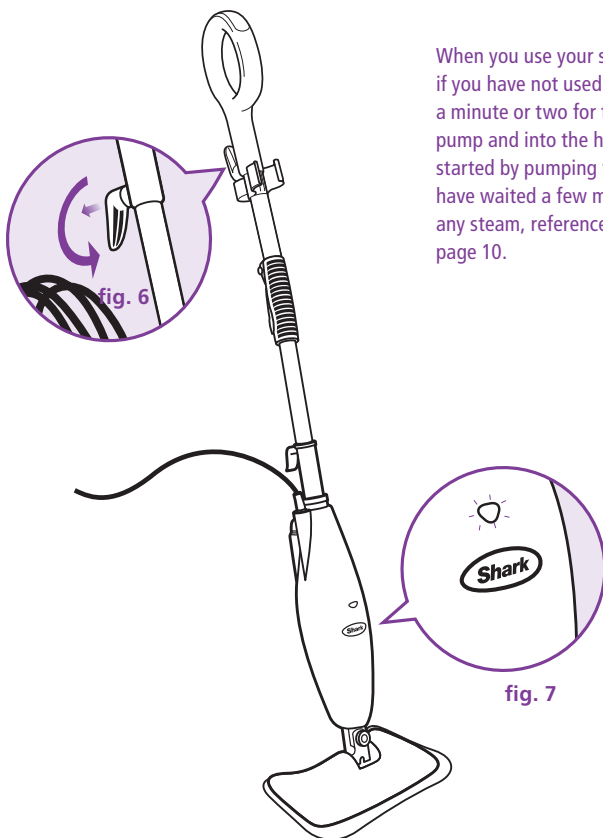
FILLING THE WATER TANK

⚠ IMPORTANT: Unplug the Easy Spray™ Steam Mop Deluxe before filling the water tank with water.

- 1 Remove the water tank cap by turning it counter-clockwise to the unlocked position. (fig. 5)
- 2 A filling flask is included with your Steam Mop to make filling the water tank easy. Fill the flask with water and pour it into the tank. Keep the water level under the MAX' fill line.
- 3 Replace the water tank cap and turn it clockwise to the locked position.



Using Your Easy Spray™ Steam Mop Deluxe



When you use your steam mop for the first time or if you have not used the unit in awhile, it may take a minute or two for the water to travel through the pump and into the heater to create steam. Get it started by pumping the handle a few times. If you have waited a few minutes and you still do not see any steam, reference the troubleshooting section on page 10.

⚠ IMPORTANT: Your steam mop needs water to make steam! Never use your steam mop without water in the tank.

Sweep or vacuum your floors prior to cleaning with your Easy Spray™ Steam Mop Deluxe.

Visit www.sharkclean.com for other great quick cleaning products to complement your Easy Spray™ Steam Mop Deluxe, such as the Shark® *Rotator*™ vacuums.

- 1 Pull and twist the quick release cord holder to unwrap the power cord completely. (**fig. 6**) Plug into an electrical outlet. The LED light will turn blue. If the light does not turn on, reference the troubleshooting section on page 10. (**fig. 7**)




 If your Easy Spray™ Steam Mop Deluxe stops steaming, it could be out of water. Unplug the power cord from the electrical outlet and refill the water tank at anytime.



fig. 8

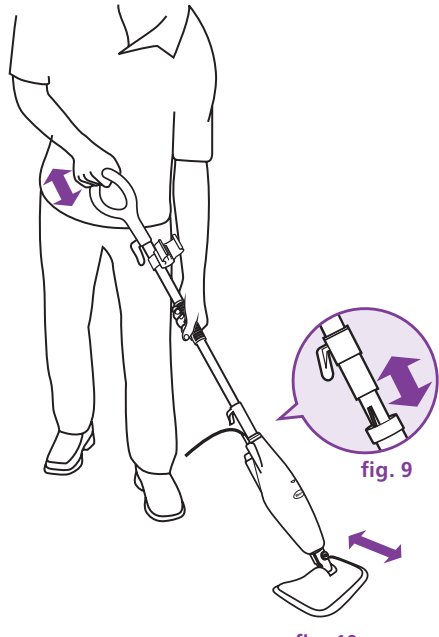


fig. 10

Using the Steam Energized™ Cleanser:

- 2 Select the **Shark** Steam Energized™ Multi-Floor Cleanser or the **Shark** Steam Energized™ Wood Floor Cleanser depending on the type of floor being cleaned and spray the surface. (fig. 8)
- 3 Wait 30 seconds for the boiler to heat the water. Pump the handle a few times to prime the pump, activate steam and moisten the SaniFiber™ disposable pad. (fig. 9)

- 4 Mop with a forward and backward motion to customize steam output automatically. (fig. 10)

IMPORTANT: Never leave the Easy Spray™ Steam Mop Deluxe with a damp/wet SaniFiber™ disposable pad on any floor surface for any amount of time as this may damage the floor.

- 5 When not using the cleanser, clip the spray bottle to the handle of the steam mop. (fig. 11) The spray bottle will stay secure during mop usage.



fig. 11



Care of Your Easy Spray™ Steam Mop Deluxe

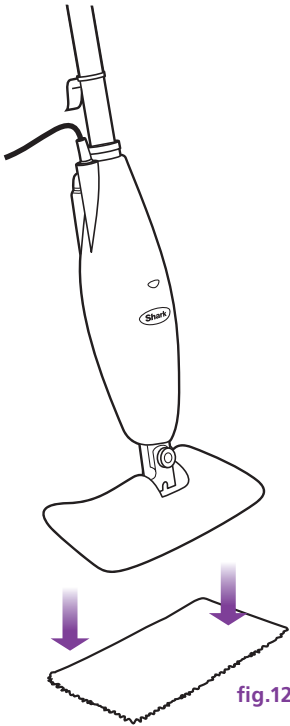


fig.12

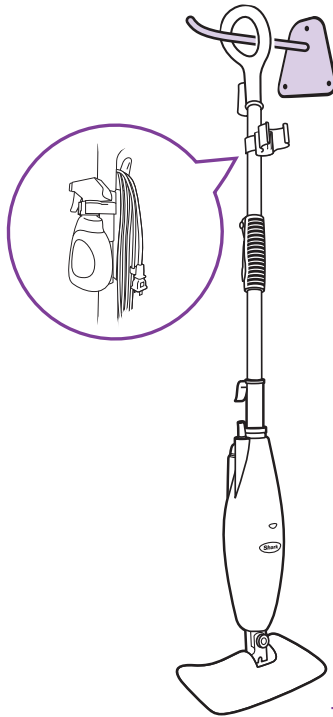


fig.13

AFTER USE AND STORAGE

- 1 When you have finished using the Easy Spray™ Steam Mop Deluxe, unplug the cord from the outlet and place the mop into the upright position (fig. 12) and let the unit cool 3-5 minutes. Release steam by pumping the handle several times.
- 2 Carefully separate SaniFiber™ disposable pad from steam mop, avoiding contact with the hot pad or dirt.
- 3 Empty the water tank before storage. Remove the water tank cap and empty the tank over a sink. Replace the water cap.

- 4 To store the cooled Shark Easy Spray™ Steam Mop Deluxe, hang on a large hook and clip the spray bottle onto the handle for storage. (fig. 13)

▲ NOTE: If you want to store the Easy Spray™ Steam Mop Deluxe standing upright, make sure it is leaning against a wall for added support and safety. Always store your Easy Spray™ Steam Mop Deluxe with the SaniFiber™ disposable pad removed. Store away from children and high traffic areas.



Ordering Replacement Parts



To order additional parts and accessories, feel free to contact us at www.sharkclean.com or call **1-800-798-7398**.

NOTE: Some parts may be available at your local retailer. Contact customer service for any other servicing.

PART	PART NO.
1 SaniFiber™ Disposable Cleaning Pads	XPD5DISP
2 Steam Energized™ Multi-Floor Cleanser	XSTENER10
3 Steam Energized™ Wood Floor Cleanser	XSTENWF10



Troubleshooting

PROBLEM	POSSIBLE REASONS & SOLUTIONS
The Easy Spray™ Steam Mop Deluxe will not turn-on.	Your steam-mop should be securely plugged into an electrical outlet only. Check your fuse or breaker. If your unit still does not work, call 1-800-798-7398 .
Easy Spray™ Steam Mop Deluxe will not make steam.	Is there water in the water tank? If not, add water to your steam mop following instructions on page 5.
Easy Spray™ Steam Mop Deluxe leaves water on the floor.	Do not leave the steam mop on the floor with a damp cleaning pad. If you are using tap water, we recommend switching to distilled water. Make sure that the cap is securely placed on the water tank.
Easy Spray™ Steam Mop Deluxe left white spot on the floor.	Check to see if the cleaning pad is soaked through. We recommend that you unplug the unit and replace the cleaning pad. Make sure that the cleaning pad is attached correctly.
Floors are cloudy, streaky or spotty after steaming.	The cleaning pad may be dirty. Change the cleaning pad. The steam mop may have been left in one spot for too long. This may be left over from past cleaners used on the floor surface. Use the steam mop a few more times again with a clean pad and see if the cloudiness is removed. If this does not work, we suggest rinsing the floor with water, letting it dry and then steam mopping again with a clean pad. One or more rinses generally removes the residue. A more stubborn case may require you to rinse the floor with a mixture of one part vinegar and two parts water.
Easy Spray™ Steam Mop Deluxe is hard to push.	Make sure the SaniFiber™ disposable pad is attached correctly. Check to see if the SaniFiber™ disposable pad is excessively dirty. Replace if the disposable pad is too dirty or wet.



ONE (1) YEAR LIMITED WARRANTY

EURO-PRO Operating LLC warrants this product to be free from defects in material and workmanship for a period of one (1) year from the date of the original purchase, when utilized for normal household use, subject to the following conditions, exclusions and exceptions.

If your appliance fails to operate properly while in use under normal household conditions within the warranty period, return the complete appliance and accessories, freight prepaid. For assistance with warranty service options or customer support, please call our customer care and product specialists at , call 1 (800) 798-7398 or visit our website www.sharkclean.com.

If the appliance is found to be defective in material or workmanship, **EURO-PRO Operating LLC** will repair or replace it free of charge. Proof of purchase is required and a fee of \$19.95 will apply to cover the cost of return freight. *

The liability of **EURO-PRO Operating LLC** is limited solely to the cost of the repair or replacement of the unit at our option. This warranty does not cover normal wear of parts and does not apply to any unit that has been tampered with or used for commercial purposes. This limited warranty does not cover damage caused by misuse, abuse, negligent handling or damage due to faulty packaging or mishandling in transit. This warranty does not cover damage or defects caused by or resulting from damages from shipping or repairs, service or alterations to the product or any of its parts, which have been performed by a repair person not authorized by **EURO-PRO Operating LLC**.

This warranty is extended to the original purchaser of the unit and excludes all other legal and/or conventional warranties. The responsibility of **EURO-PRO Operating LLC** warranty if any, is limited to the specific obligations expressly assumed by it under the terms of the limited warranty. **In no event is EURO-PRO Operating LLC** liable for incidental or consequential damages of any nature whatsoever. Some states/provinces do not permit the exclusion or limitation of incidental or consequential damages, so the above may not apply to you.

This warranty gives you specific legal rights, and you may also have other rights which vary from state to state or province to province.

***Important: Carefully pack item to avoid damage in shipping. Be sure to include proof of purchase date and to attach tag to item before packing with your name, complete address and phone number with a note giving purchase information, model number and what you believe is the problem with the item. We recommend you insure the package (as damage in shipping is not covered by your warranty). Mark the outside of your package "ATTENTION CUSTOMER SERVICE". We are constantly striving to improve our products, therefore the specifications contained herein are subject to change without notice.**

Product Registration

Please visit www.sharkclean.com or call **1-800-798-7398** to register your new **Shark®** product within ten (10) days of purchase. You will be asked to provide the store name, date of purchase and model number along with your name and address.

The registration will enable us to contact you in the unlikely event of a product safety notification. By registering you acknowledge to have read and understood the instructions for use, and warnings set forth in the accompanying instructions.



EURO-PRO Operating LLC

U.S.: Newton, MA 02459

Canada: Ville St. Laurent, Québec H4S 1A7

1-800-798-7398

www.sharkclean.com

COPYRIGHT © 2013 EURO-PRO OPERATING LLC

PRINTED IN CHINA

Euro-Pro, Shark, SaniFiber and **Rotator** are trademarks of Euro-Pro Operating LLC.

SK140_E.130718.2-DG

Illustrations may differ from actual product.