

# Shark

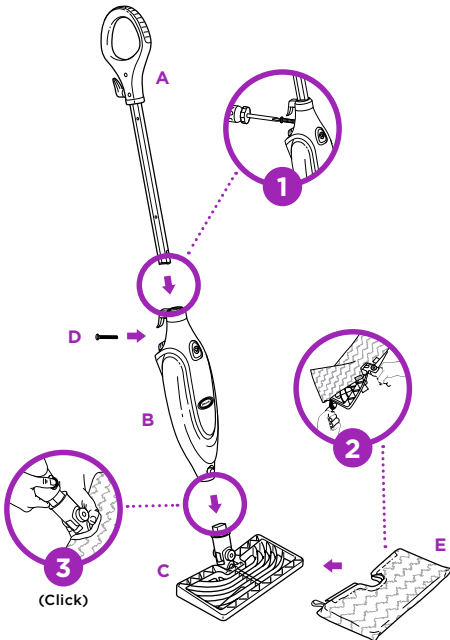
## PRO STEAM POCKET® MOP With Intelligent Steam Control®

### QUICK START GUIDE

#### WHAT'S INSIDE

- A** Mop Handle
- B** Mop Body
- C** Mop Head
- D** (1) 6mm x 54mm Large Screw
- E** (2) Dirt Grip™ Pocket Pads
- F** Filling Flask

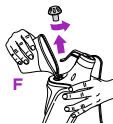
#### ASSEMBLY



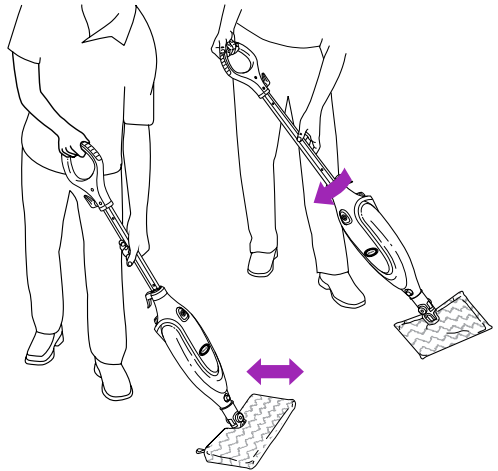
1. Screw the Mop handle into the Mop Body (screwdriver not included).
2. Secure the Mop Head inside the Dirt Grip Pocket Pad.
3. Snap the Steam Mop Body onto the post on the Mop Head.

#### FILLING THE WATER TANK

1. Remove the water tank cap by turning it counterclockwise.
2. Use the filling flask and pour water into the tank. Do not overfill. Replace the cap on the water tank, and turn clockwise to lock.



#### USING THE PRO STEAM POCKET MOP



1. Plug the power cord into an electrical outlet. The STEAM CONTROL BUTTON will flash blue. Press the button to select your steam setting: once for DUST; twice for MOP; and three times for SCRUB. Pressing a fourth time will place the unit on standby.
2. Wait 30 seconds for the unit to begin producing steam. Start mopping on an appropriate sealed hard-floor surface with a forward and backward motion.
3. When one side of the Dirt Grip Pocket Pad gets dirty, simply flip the mop over to use the other side of the pad.



#### INTELLIGENT STEAM CONTROL

SETTING	IDEAL FOR THESE SEALED SURFACES	RECOMMENDED USAGE
<b>DUST</b> 	Laminate Hardwood Marble	Light cleaning & dusting
<b>MOP</b> 	Hardwood Marble Tile Stone	Cleaning most surfaces & large areas
<b>SCRUB</b> 	Tile Stone	Deep cleaning & cleaning hard-to-clean surfaces

## AFTER USE AND STORAGE

1. When you have finished using the Pro Steam Pocket® Mop, press the Steam Control button until the LED light turns flashing BLUE. This stops the unit from steaming. Unplug the cord from the outlet and place the Steam Mop in the upright position. Let the unit cool for 2-3 minutes.
2. Remove the Dirt Grip™ Pocket Pad by releasing the quick fasteners and using the loop on the side of the pad, avoiding contact with the hot pad.
3. To store the Shark® Pro Steam Pocket® Mop hanging up, first remove the head (after it has cooled and the steam has been released), then hang on a large hook (not included). Empty the water tank before storing the Pro Steam Pocket Mop for an extended period.

## CLEANING THE PAD

1. Wash pads in warm water. Wash separately from other laundry. Only use liquid detergent. (no powder detergent) Don't use any fabric softeners. Line dry or dry on a low dryer setting.

## TROUBLESHOOTING

PROBLEM	POSSIBLE REASONS & SOLUTIONS
The Pro Steam Pocket Mop will not turn on.	Ensure the power cord is plugged in correctly to a working electrical outlet.
The Pro Steam Pocket Mop will not make steam.	Verify the Steam Control button is illuminated steadily in blue, indicating a steam setting has been selected. Ensure that the unit is filled with water.
Cannot activate steam mode on the Pro Steam Pocket Mop.	Unplug the unit from the electrical outlet, wait 15-30 seconds, then plug the unit back in.
The Pro Steam Pocket Mop leaves water on the floor or is becoming hard to push.	Confirm that the pocket pad is properly affixed to the mop head and not overly saturated. If the pocket pad is overly wet, unplug the unit, wait 2 to 3 minutes for the pocket pad to cool, and then replace with a clean, dry pocket pad.
The Pro Steam Pocket Mop left a white spot on the floor.	Always use the wet steam mop in the correct manner. Never leave the unit with a damp or wet pad attached.
Floors are cloudy, streaky or spotty after steaming.	<p>The pad may be dirty. Replace with a clean pad.</p> <p>If you washed pad with powdered detergent, then it may contain residual detergent. Wash pad again with liquid detergent.</p> <p>In kitchen areas with grease buildup, first prep the floor with a de-greasing agent such as an all-purpose cleaner or dish soap, then wipe with paper towels.</p> <p>You might have left the mop in the same spot for too long.</p> <p>Do you have hard water? We recommend using distilled water rather than tap water in the tank.</p> <p>Streaks, clouds, and spots may be caused by cleansers previously used on the floor surface. Clean with Steam Mop a few more times to remove leftover cleansers.</p>

For questions or to register your product, contact us at: 800-798-7398 or visit us online at [sharkclean.com](http://sharkclean.com)



@sharkcleaning