

# Shark®

WWW.SHARKCLEAN.COM

---

PRO  
**STEAM POCKET® MOP**

---

S3601

---

**OWNER'S GUIDE**

---



# IMPORTANT SAFETY INSTRUCTIONS

## SAVE THESE INSTRUCTIONS

### For Household Use Only

#### WHEN USING YOUR SHARK STEAM MOP, BASIC SAFETY PRECAUTIONS SHOULD ALWAYS BE FOLLOWED, INCLUDING THE FOLLOWING:

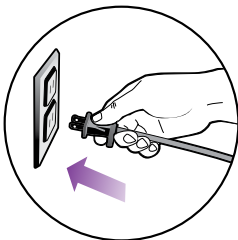
#### READ ALL INSTRUCTIONS BEFORE USING YOUR STEAM MOP.

#### DANGER OF SCALDING.

Please use caution when using the steam mop. The steam emitted from the steam mop is very hot.

#### POLARIZED PLUG:

This appliance has a polarized plug (one blade is wider than the other). As a safety feature, this plug will fit into a polarized outlet only one way. If the plug does not fit fully into the outlet, reverse the plug. If it still does not fit, contact a qualified electrician. **Do not attempt to defeat this safety feature.**



1. Use the system only for its intended use.
2. **DO NOT** use outdoors.
3. **DO NOT** leave the appliance unattended when plugged in. Always unplug the power cord from the electrical outlet when not in use and before servicing.
4. **DO NOT** allow the appliance to be used by children. Close attention is necessary when used by or near children, pets or plants.
5. Use only as described in this manual.
6. Use only manufacturer's recommended accessories.
7. **DO NOT** operate the appliance with a damaged plug or cord, or if the unit has been dropped or damaged. To avoid the risk of electric shock, do not disassemble or attempt to repair the appliance on your own. Return the appliance to EURO-PRO Operating LLC for examination and repair. Incorrect re-assembly or repair can cause a risk of electrical shock or injury to persons when the appliance is used.
8. To protect against a risk of electric shock, **DO NOT** immerse the steam mop into water or any other liquids.
9. **DO NOT** handle plug or steam mop with wet hands or operate appliance without shoes.
10. **DO NOT** pull or carry by power cord, use power cord as handle, close a door on the power cord, or pull the power cord around sharp edges or corners. Keep power cord away from heated surfaces.
11. **DO NOT** unplug by pulling on power cord. To unplug, grasp the plug not the power cord. Do not use extension cords or outlets with inadequate current carrying capacity.
12. **DO NOT** put any objects into openings. Do not use with any opening that is blocked.
13. **DO NOT** put hands or feet under the steam mop. Unit gets very hot.
14. Use **ONLY** on flat, horizontal surfaces. Do not use on walls, counters or windows.
15. **DO NOT** use on leather, wax polished furniture or floors, synthetic fabrics, velvet or other delicate, steam sensitive materials.
16. **DO NOT** add cleaning solutions, scented perfumes, oils or any other chemicals to the water used in this appliance as this may damage the unit or make it unsafe for use. If you live in a hard water area, we recommend using distilled water in your steam mop.
17. When in use, NEVER turn the appliance over or on its side. **NEVER DIRECT STEAM TOWARDS PEOPLE, ANIMALS OR PLANTS.**
18. **NEVER LEAVE THE STEAM MOP IN ONE SPOT ON ANY SURFACE FOR ANY PERIOD OF TIME WHEN MICRO-FIBER PAD IS ATTACHED AS THIS WILL DAMAGE YOUR FLOORS.**
19. Carefully remove the micro-fiber cleaning pad immediately after you have unplugged and allowed the steam mop to cool.
20. When cleaning the steam mop, unplug the power cord from the electrical outlet and clean with a dry or damp cloth. Do not pour water or use alcohol, benzene or paint thinner on the unit.
21. Extreme caution should be exercised when using this appliance to clean stairs.
22. Never use steam mop without micro-fiber cleaning pad attached.
23. Keep your work area well lit.
24. Store steam mop indoors in a cool, dry place.
25. To avoid circuit overload, do not operate another appliance on the same socket (circuit) as the steam cleaner.
26. If an extension cord is absolutely necessary, an extension cord rated a minimum of 15 ampere, 14 gage cord should be used. Cords rated for less amperage may overheat. Care should be taken to arrange cord so that it cannot be pulled or tripped over.
27. Always unplug and allow the steam mop to cool before removing or changing mop heads.

**! WARNING:** Your steam mop is designed to clean hard floor surfaces that will withstand high heat. Do not use on unsealed wood or unglazed ceramic floors. On surfaces that have been treated with wax or some no wax floors, the sheen may be removed by the heat and steam action. It is always recommended to test an isolated area of the surface to be cleaned before proceeding. We also recommend that you check the use and care instructions from the floor manufacturer.

# Contents

Thank you for purchasing the **Shark® Pro Steam Pocket®** Mop.

- Getting Started .....2
- Using Your Steam Mop .....5
- Using Your Carpet Glider .....9
- Care of Your Steam Mop .....10
- Troubleshooting Guide .....12
- Warranty .....13

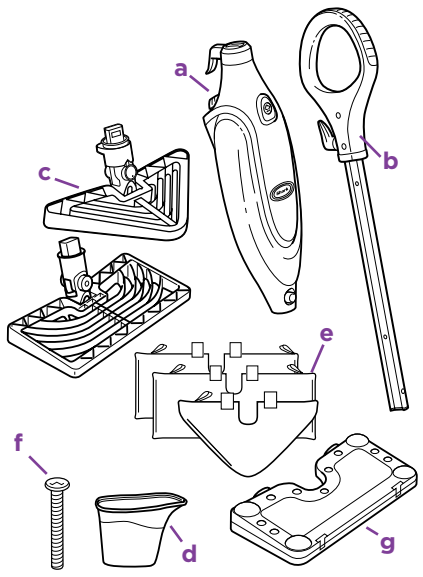
This manual covers model number: S360111

**TECHNICAL SPECIFICATIONS**

- Voltage: 120V., 60Hz.
- Power: 1550 Watts
- Water Capacity: 500ml (16.9 oz.)

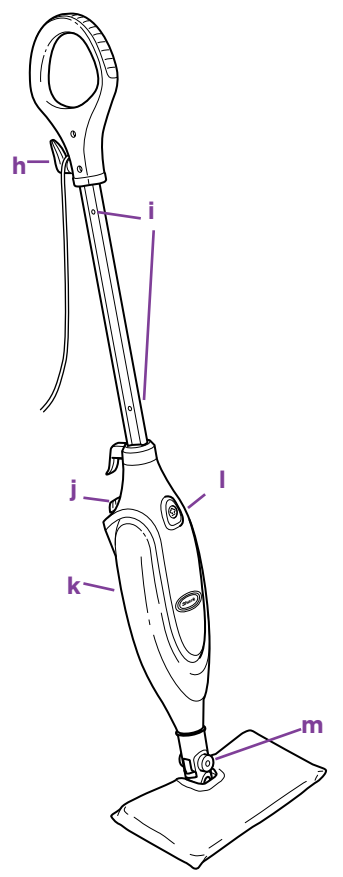
# Getting Started

When assembling your steam mop there may be a little water in or around the water tank. This is because we test all our steam mops 100% before you buy them, so you get a quality Shark® Pro Steam Pocket® Mop.



- a Steam Mop Body
- b Mop Handle
- c All-Purpose Mop Head (1) and Triangle Mop Head (1)
- d Filling Flask
- e Two-Sided Micro-Fiber Cleaning Pads for the All-Purpose Mop Head (2) and Triangle Mop Head (1)
- f (1) Large Screw\*
- g Carpet Glider

\*Phillips or flat head screwdriver can be used. Screwdriver not included.



- h Quick Release Swivel Cord Wrap
- i Cord Clips
- j Water Tank Cap
- k Water Tank
- l ON/Standby Switch
- m Mop Head Release Button

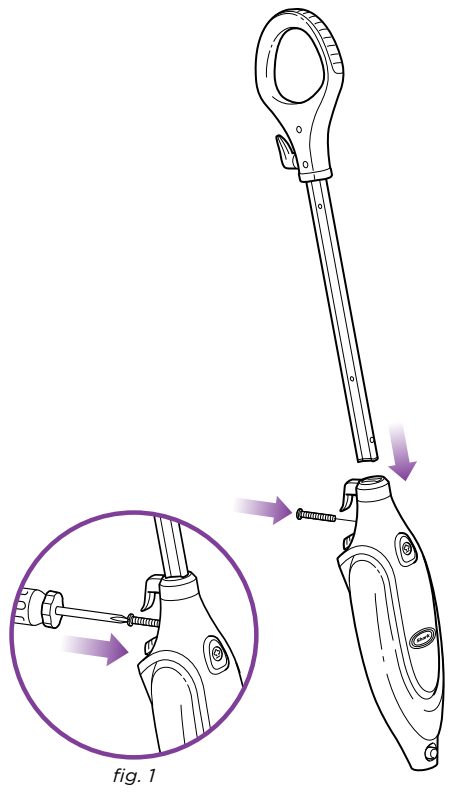
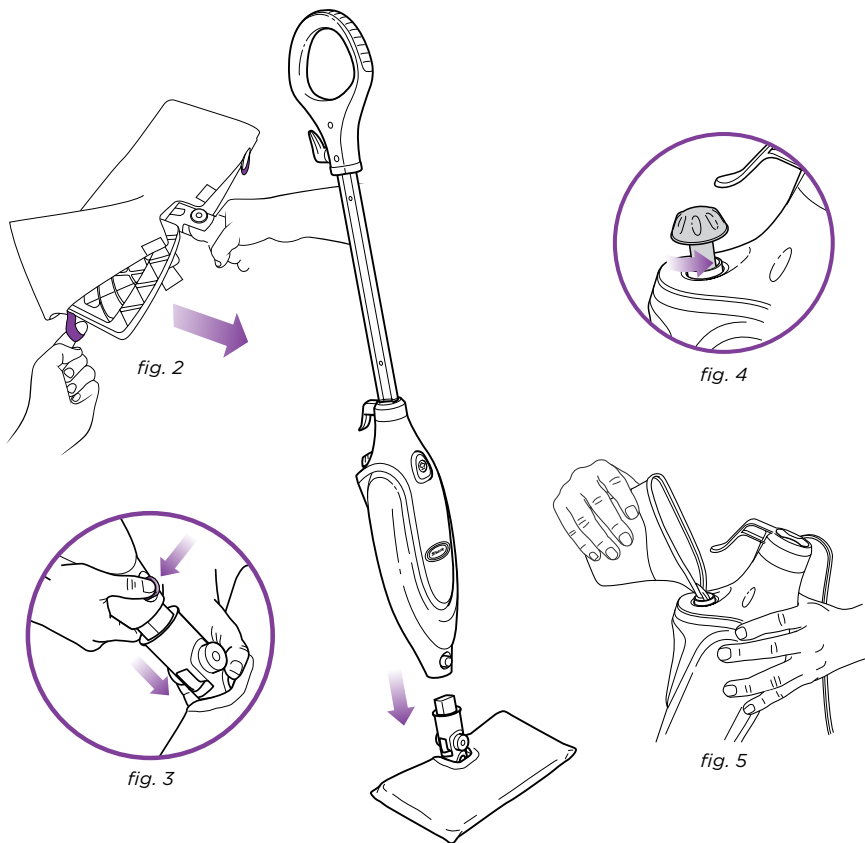


fig. 1

**IMPORTANT:** First things first, always make sure the mop is **UNPLUGGED** from the wall when not in use. Never fill the mop, attach the mop head, change or remove the micro-fiber cleaning pad when the mop is plugged into the wall. To prolong the life of your Shark® Pro Steam Pocket® Mop, we recommend using distilled water. Make sure you only add water to the tank. Chemicals or cleaning solution may damage the appliance and could be unsafe for you and your family.

- ASSEMBLE**
- 1 Insert the Mop handle end labeled "Front" into the steam mop body. Make sure it is inserted past the line printed on the pole. The screw hole on the bottom of the pole will match the screw hole on the mop body. Secure the assembled handle and pole by using the provided large screw and a Phillips or a flat head screw driver. (fig. 1)

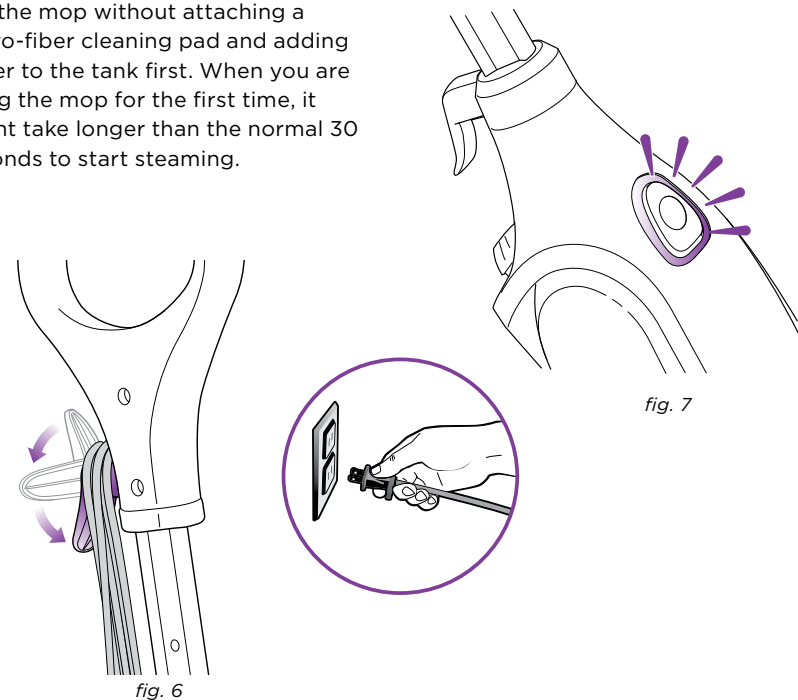


- 2 Use the lavender loop on the side of the micro-fiber cleaning pad to place around the all-purpose mop head. Then attach the quick fasteners on the top of the pocket to secure in place. (fig. 2)
- 3 Snap the mop head into the base to secure it. (fig. 3)
- 4 Turn the water tank cap counter clockwise and remove from the tank. (fig. 4)

Use the filling flask and pour water into the tank. Please don't overfill. Replace the cap on the water tank. (fig. 5)

**⚠ IMPORTANT:** Don't use on unsealed wood or unglazed ceramic floors. On surfaces that have been treated with wax or some no wax floors, the sheen may be removed by the heat and steam action. It is always recommended to test an isolated area of the surface to be cleaned before proceeding. We recommend that you check the use and care instructions from the floor manufacturer.

**⚠ IMPORTANT:** Make sure you don't use the mop without attaching a micro-fiber cleaning pad and adding water to the tank first. When you are using the mop for the first time, it might take longer than the normal 30 seconds to start steaming.



**⚠ IMPORTANT:** Your Steam Mop needs water to make steam! Never use your steam mop without water in the tank. Sweep or vacuum your floors prior to cleaning with your Steam Mop. Visit [www.sharkclean.com](http://www.sharkclean.com) for other great quick cleaning products to complement your Steam Mop, such as the **Shark®** Navigator (model NV350).

- 1 Pull and twist the quick release cord holder to unwrap the power cord completely. Plug into a 120-volt electrical outlet. (fig. 6)
- 2 The **ON/STANDBY** switch will flash blue. If the light does not turn on, reference the troubleshooting section on page 12. (fig. 7)

## Using Your Steam Mop - cont'd

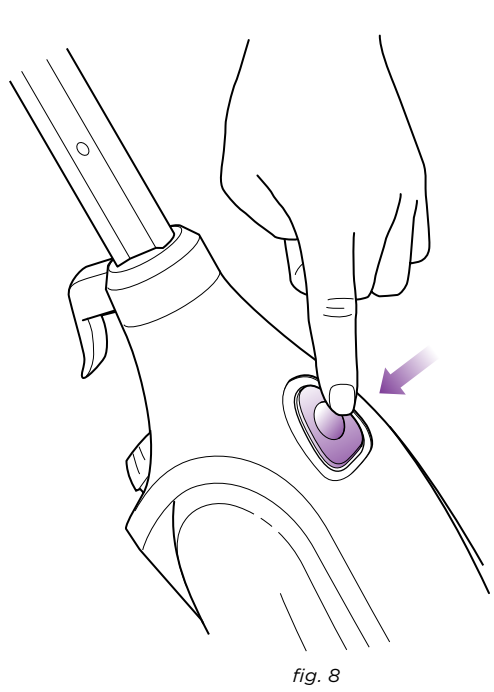


fig. 8



fig. 9

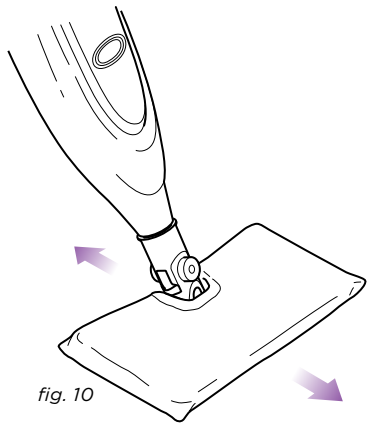


fig. 10

- Press the **ON/STANDBY** switch once to activate the **DUST** steam setting. The **ON/STANDBY** switch will turn solid blue, and the LED light corresponding to the **DUST** setting will also turn blue. This steam setting is ideal for light cleaning and dusting on all surfaces and is best for fast floor drying. This setting is gentle enough to use on delicate floor surfaces such as laminate. **(fig. 8)**  
For basic, everyday cleaning and removal of spots and smaller stains, press the **ON/STANDBY** switch a second time to activate the **MOP** steam setting. The LED light corresponding to the **MOP** setting will then turn blue. This steam setting is ideal for surfaces such as hardwood and tile. **(fig. 9)**

For tough cleaning and the removal of tough, stuck-on messes and stains, press the **ON/STANDBY** switch a third time to activate the **SCRUB** steam setting. The LED light corresponding to the **SCRUB** setting will turn blue. This steam setting is appropriate for use on more durable floors such as tile and stone. To better understand which steam setting to use for your mess, turn to page 7.

- Clean your floors with a forward and backward motion. **(fig. 10)**  
Press the **ON/STANDBY** switch until the light flashes to stop the steam.


The **Shark® Pro Steam Pocket®** Mop has three unique steam settings so you can use the perfect amount of steam for the cleaning task at hand. See below for tips on when to use each setting.

Setting	Ideal for These Surfaces	Recommended Usage
<b>DUST</b> 	Laminate Bamboo Hardwood Marble	Light Cleaning and Dusting Loosen and Lift Light Dirt Sanitize Floors
<b>MOP</b> 	Hardwood Marble Tile Stone	Basic, everyday cleaning Remove spots and smaller messes Clean moderate and heavily-trafficked areas Sanitize floors
<b>SCRUB</b> 	Hardwood* Tile Stone Linoleum ----- Carpet (with Carpet Glider)	Tough cleaning and removal of stuck-on messes and stains Deep clean heavily-trafficked areas Cut through heavy dirt and grime Sanitize floors ----- Freshen area rugs and carpets


\* Scrub mode not recommended for continuous cleaning on hardwood




fig. 11

 For your safety, the Steam Mop will automatically go into **STANDBY** mode after 30 seconds of non-use. Just press the **ON/STANDBY** switch to awaken your mop from auto shut-off mode and resume mopping.

- 5 When one side of the micro-fiber cleaning pad gets dirty, just flip the mop head and you can quickly start using the other side. (fig. 11)
- 6 When the water tank is empty, the steam mop will stop producing steam. You can refill the water tank at any time as long as the mop is unplugged from the outlet. Follow the instructions from page 4. This applies to switching the mop heads or micro-fiber cleaning pad as well.

 **NOTE:** Please wait 2-3 minutes for the Steam Mop to cool off before removing the mop head or the micro-fiber cleaning pad. Never leave the steam mop with a damp/wet micro-fiber cleaning pad on any floor.

 **IMPORTANT:** Your Steam Mop has an auto shut-off feature that stops the unit from steaming after 30 seconds of non-use. Just press the **ON/STANDBY** switch to awaken your mop from auto shut-off mode and resume mopping.

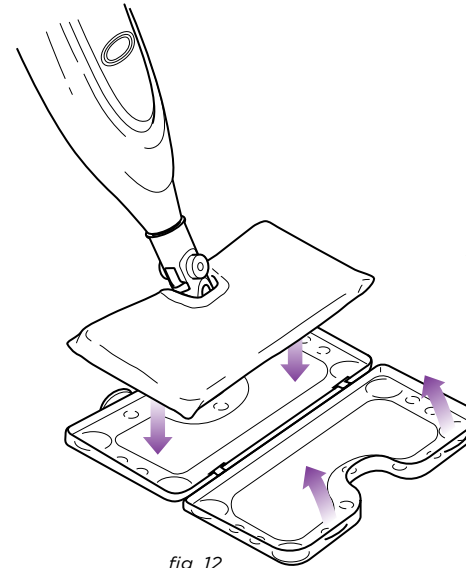



fig. 12

 The Steam Mop is great for grooming and freshening though it won't clean your carpet or area rugs.

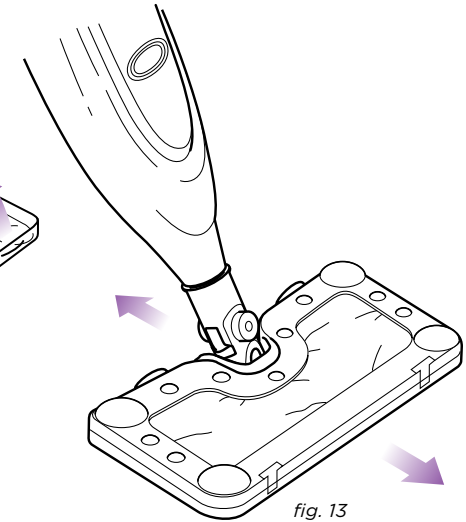



fig. 13

### THE CARPET GLIDER

- 1 The Carpet Glider can be used with the all-purpose head to lightly steam your carpet and area rugs. Just place the mop head with micro-fiber cleaning pad attached on top of the glider and snap the top of it into place. The recommended steam setting is **SCRUB** when using the carpet glider. (fig. 12)
- 2 Move the steam mop back and forth across a section of the carpet. The steam mop won't clean your carpeting or areas rugs, but it's great for grooming and freshening. (fig. 13)

 **NOTE:** Do not leave steam mop with carpet glider in one stationary position for any period of time.

# Care of Your Steam Mop

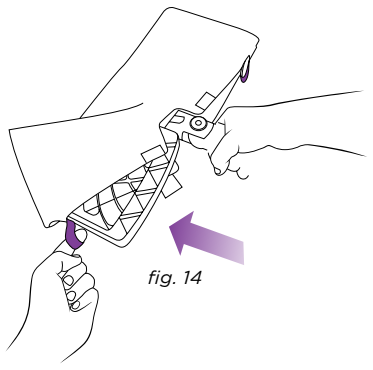


fig. 14

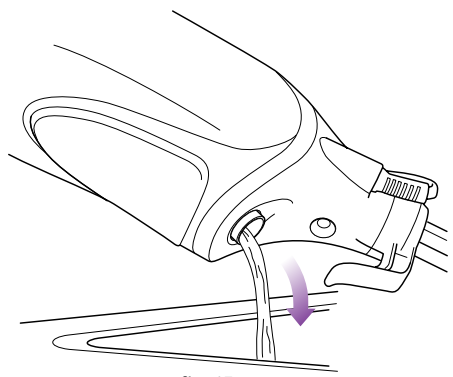


fig. 15

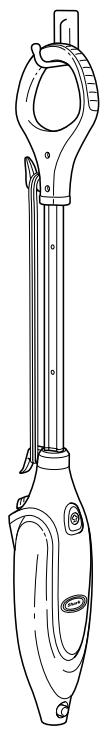


fig. 16

- 2 Empty the water tank before storage. Remove the water tank cap and empty the tank over a sink. Replace the water cap. (fig. 15)
- 3 To store the Shark® Pro Steam Pocket® Mop hanging up, first remove the head (after it has cooled and the steam has been released) then hang on a large hook. (fig. 16)

**⚠ IMPORTANT:** Calcium and mineral deposits can build up and impact the performance of your steam mop over time. To extend the life of your product we recommend that you use distilled water or Shark®'s Water Filtration Bottle. Visit [www.SharkClean.com](http://www.SharkClean.com) to order. Also see page 11 for instructions on how to decalcify your mop as part of your regular maintenance.

## AFTER USE AND STORAGE

- 1 When you have finished using the steam mop, press the ON/STANDBY switch until the LED light turns flashing BLUE. This stops the unit from steaming. Unplug the cord from the outlet and place the mop into the upright position. Let the unit cool for 2-3 minutes.

Remove the micro-fiber cleaning pad by releasing the quick fasteners and using the lavender loop on the side of the pocket, avoiding contact with the hot pad or dirt. (fig. 14)

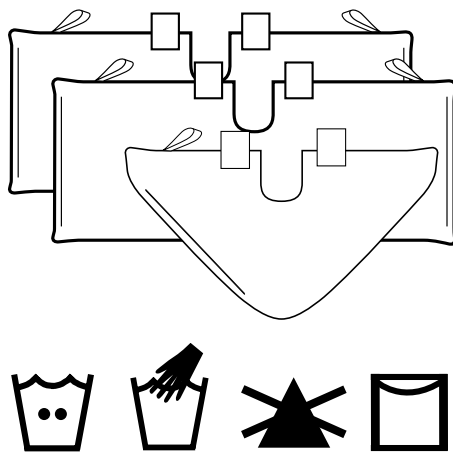


fig. 17

## CARE OF YOUR MICRO-FIBER CLEANING PAD

- 1 We recommend washing your micro-fiber cleaning pad separately from other fabrics to avoid picking up lint. Only use liquid detergent (no powder detergent). Don't use any fabric softeners or bleach. Line dry or dry on a low dryer setting. (fig. 17)
- 2 If there are loose threads on the micro-fiber cleaning pad carefully cut the thread with scissors. Don't pull on them or cut at the base. (fig. 18)

**💡** To order additional parts and accessories, feel free to contact us at [www.SharkClean.com](http://www.SharkClean.com) or call 1-800-798-7398.

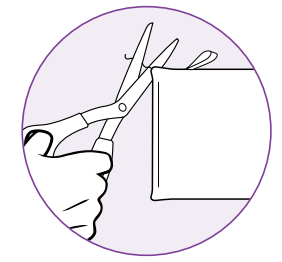


fig. 18

## DECALCIFYING YOUR STEAM MOP

Over time calcium deposits can build up and impact the performance of your mop. We recommend you decalcify your Steam Mop every 2-3 months to prolong the life of your mop.

- 1 Fill the water tank of your steam mop with 1 part white vinegar to 4 parts water.
- 2 Placing the mop in a shower or tub, run the mop continuously until the water tank is empty and the mop stops making steam.
- 3 Turn the mop off and unplug your Shark® Pro Steam Pocket® Mop.



PROBLEM	POSSIBLE REASONS & SOLUTIONS
The Pro Steam Pocket® Mop will not turn-on.	Your steam mop should be securely plugged into a 120V AC electrical outlet only. Check your fuse or breaker. If your unit still does not work, call <b>1-800-798-7398</b> .
The unit will not make steam.	Is there water in the water tank? If not, add water to your steam mop following instructions on page 4. If the unit still doesn't make steam, follow the decalcification instructions on page 11.
The Pro Steam Pocket® Mop leaves water on the floor.	Check to see if your micro-fiber cleaning pad is too wet. We recommend you unplug the steam mop and change the micro-fiber cleaning pad. Make sure the micro-fiber cleaning pad is attached correctly.
The Pro Steam Pocket® Mop left a white spot on the floor.	Do not leave your steam mop on the floor with a damp or wet cleaning pad. Do you have hard water? If you do, we recommend switching to distilled water. Make sure the cap is securely on the water tank.
Floors are cloudy, streaky or spotty after steaming.	This might be leftover from past cleaners used on the floor surface. Use the steam mop a few more times and see if the leftover cloudiness is removed. The micro-fiber cleaning pad might be dirty. Flip or change the cleaning pad. If you washed the cleaning pad with powder detergent then it might be ruined. If you are cleaning in a kitchen area where there might be a build-up of grease, then use a degreasing agent, such as an all-purpose cleaner or dish soap and paper towels, to clean the area first. You might have left the mop in the same spot for too long.
The Pro Steam Pocket® Mop is hard to push.	Make sure the micro-fiber cleaning pad is attached correctly. Check to see if the cleaning pad is excessively dirty. Replace if the cleaning pad is too dirty or wet.

# ONE (1) YEAR LIMITED WARRANTY

**EURO-PRO Operating LLC** warrants this product to be free from defects in material and workmanship for a period of one (1) year from the date of the original purchase, when utilized for normal household use, subject to the following conditions, exclusions and exceptions.

If your appliance fails to operate properly while in use under normal household conditions within the warranty period, return the complete appliance and accessories, freight prepaid. For Customer Service support, call 1 (800) 798-7398 or visit our website [www.sharkclean.com](http://www.sharkclean.com).

If the appliance is found to be defective in material or workmanship, **EURO-PRO Operating LLC** will repair or replace it free of charge. Proof of purchase date and \$ 9.95 to cover the cost of return shipping and handling must be included. \*

The liability of **EURO-PRO Operating LLC** is limited solely to the cost of the repair or replacement of the unit at our option. This warranty does not cover normal wear of parts and does not apply to any unit that has been tampered with or used for commercial purposes. This limited warranty does not cover damage caused by misuse, abuse, negligent handling or damage due to faulty packaging or mishandling in transit. This warranty does not cover damage or defects caused by or resulting from damages from shipping or repairs, service or alterations to the product or any of its parts, which have been performed by a repair person not authorized by **EURO-PRO Operating LLC**.

This warranty is extended to the original purchaser of the unit and excludes all other legal and/or conventional warranties. The responsibility of **EURO-PRO Operating LLC** warranty if any, is limited to the specific obligations expressly assumed by it under the terms of the limited warranty. **In no event is EURO-PRO Operating LLC** liable for incidental or consequential damages of any nature whatsoever. Some states/provinces do not permit the exclusion or limitation of incidental or consequential damages, so the above may not apply to you.

This warranty gives you specific legal rights, and you may also have other rights which vary from state to state or province to province.

**\*Important: Carefully pack item to avoid damage in shipping. Be sure to include proof of purchase date and to attach tag to item before packing with your name, complete address and phone number with a note giving purchase information, model number and what you believe is the problem with the item. We recommend you insure the package (as damage in shipping is not covered by your warranty). Mark the outside of your package "ATTENTION CUSTOMER SERVICE". We are constantly striving to improve our products, therefore the specifications contained herein are subject to change without notice.**



## OWNERSHIP REGISTRATION CARD FOR CANADIAN CONSUMERS ONLY

Please complete and return within ten (10) days of purchase. The registration will enable us to contact you in the event a product defect is discovered. By returning this card you acknowledge to have read and understood the instructions for use, and warnings set forth in the accompanying instructions.

RETURN TO: **EURO-PRO Operating LLC**, 4400 Bois Franc, St. Laurent, Quebec H4S 1A7

PURCHASER: .....

ADDRESS: .....

DATE OF PURCHASE: ..... MODEL: **S36011** .....

NAME AND ADDRESS OF STORE: .....



U.S.: EURO-PRO Operating LLC  
Newton, MA 02459

Canada: EURO-PRO Operating LLC  
4400 Bois Franc  
Ville St. Laurent, Québec H4S 1A7

1-800-798-7398

[www.sharkclean.com](http://www.sharkclean.com)

COPYRIGHT © EURO-PRO OPERATING LLC 2010

PRINTED IN CHINA S3601.E.101116

Illustrations may differ from actual product.