

Please be sure to read the enclosed Shark® Owner's Guide prior to using your unit.

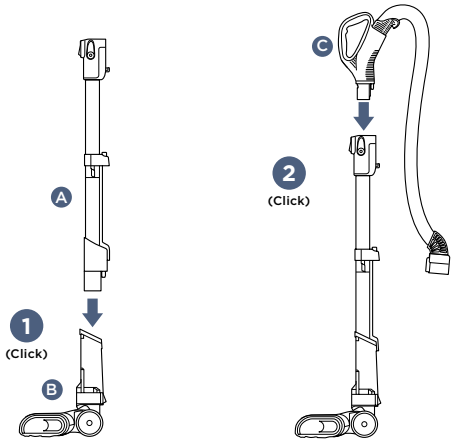
Shark ROTATOR® POWERED LIFT-AWAY® with Self-Cleaning Brushroll

QUICK START GUIDE

WHAT'S INSIDE

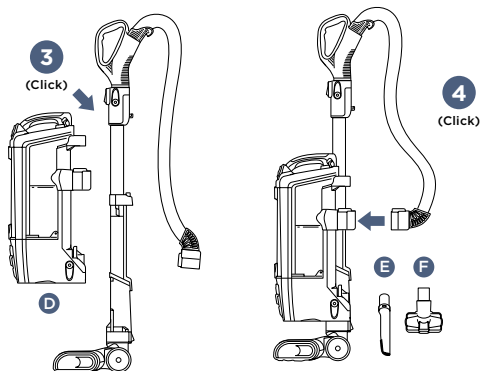
- A Wand
- B Motorized Floor Nozzle
- C Handle & Hose
- D Vacuum Pod
- E Pet Crevice Tool
- F Pet Multi-Tool

ASSEMBLY



Insert wand into motorized floor nozzle.

Insert handle into wand.

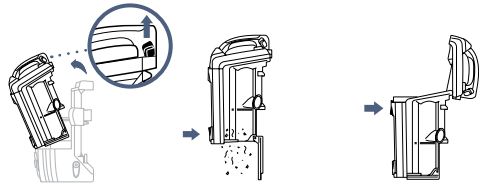


Place pod onto wand and slide down to connect.

Connect hose to back of pod, pressing until it clicks into place. Store accessories on the posts on the pod.

MAINTENANCE

Empty dust cup after each use

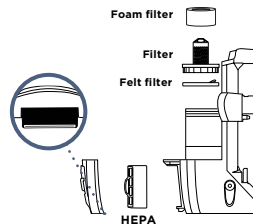


Pull up on dust cup release latch and lift dust cup off pod.

Hold dust cup over a trash bin and press the empty-release latch on the bottom.

Press top empty-release latch to access dust screen and remove built-up debris as required.

Cleaning Filters



TIP:

Wash foam and felt filters every 3 months to keep the suction strong.

Rinse filters with water only and allow them to air-dry completely. Tap loose dirt from foam filters as needed between washes.

Pre-Motor (foam and felt):

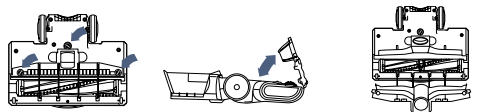
With the dust cup removed, take out the foam and felt filters and rinse them with water only.

Post-Motor (HEPA):

To access the HEPA filter, pull the Filter Access latch under the filter cover and take off the cover. Remove the HEPA filter and rinse it with water only.

Self-Cleaning Brushroll

The self-cleaning brushroll automatically removes hair wrap. If some hair or debris remains after continued use, remove the cover to access the brushroll.



Using a coin, turn locks counterclockwise to open, then lift off cover to access brushroll.

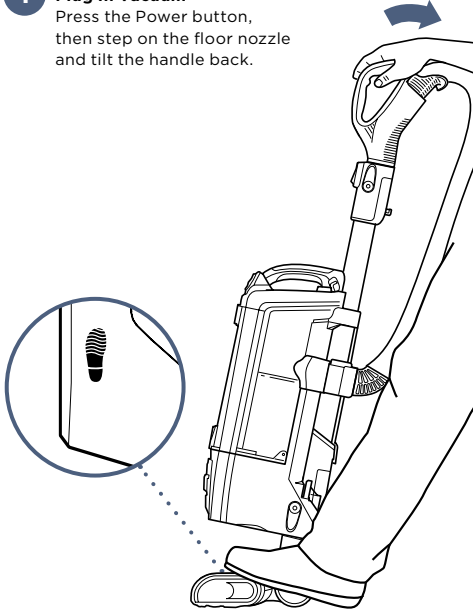
Clear blockages from airway.

Replace cover, pressing down firmly on all sides before turning locks clockwise to close.

VERSATILE FLOOR-TO-CEILING CLEANING

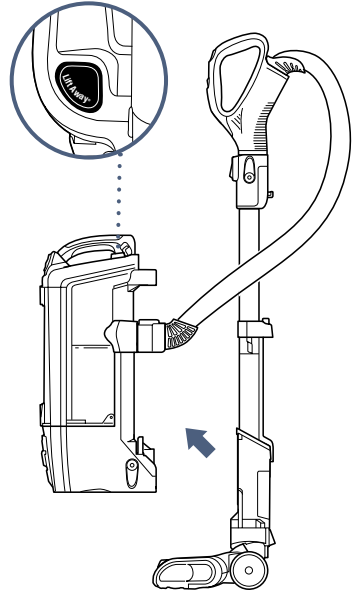
FLOOR CLEANING

- 1 Plug In Vacuum**
Press the Power button, then step on the floor nozzle and tilt the handle back.



POWERED LIFT-AWAY® MODE

Press Lift-Away® button to lift pod off floor nozzle. You are now ready to clean those hard-to-reach places.



- 2 Choose Setting**
Slide the selector switch to the appropriate surface setting:



For thick carpets and area rugs:
Set switch to Thick Carpet/Area Rug.



For low-pile carpets:
Set switch to Carpet/Low Pile.

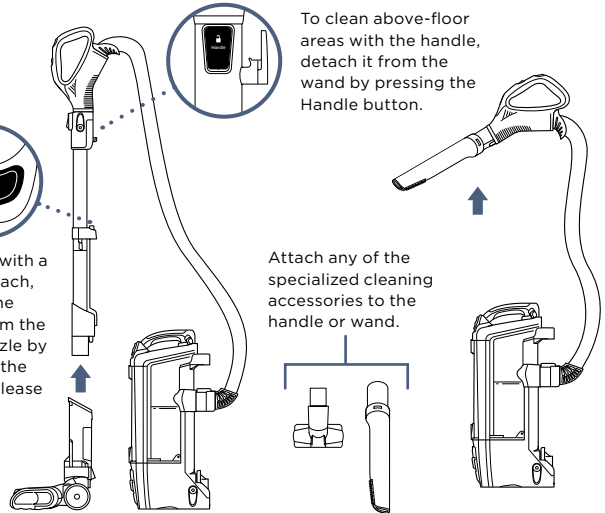


For bare floors or above-floor areas:
Set switch to Hard Floor.



To clean with a longer reach, detach the wand from the floor nozzle by pressing the Wand Release button.

LIFT-AWAY ABOVE-FLOOR CLEANING



To clean above-floor areas with the handle, detach it from the wand by pressing the Handle button.

Attach any of the specialized cleaning accessories to the handle or wand.

NOTE:
For deep cleaning, use Carpet/Low Pile setting.

For questions or to register your product, visit us online at sharkclean.com

© 2019 SharkNinja Operating LLC. LIFT-AWAY, POWERED LIFT-AWAY, ROTATOR, and SHARK are registered trademarks of SharkNinja Operating LLC.

ZU632_QSG_MP_Mv4



@sharkcleaning