

Please be sure to read the enclosed Shark® Owner's Guide prior to using your vacuum.

Shark® Rocket®

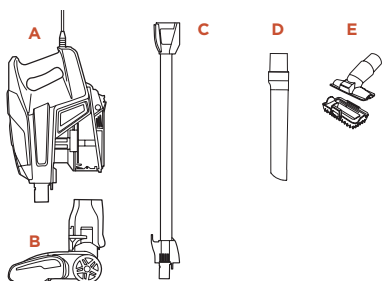
Corded Ultra-Light Vacuum

ZERO-M™

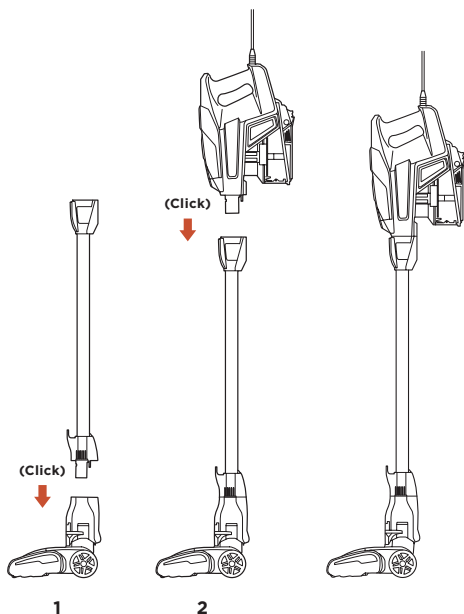
QUICK START GUIDE

WHAT'S INSIDE

- A** Handheld Vacuum
- B** Zero-M® Cleaner Head
- C** Wand
- D** 12" Crevice Tool
- E** Pet Multi-Tool



ASSEMBLY



VERSATILE FLOOR-TO-CEILING CLEANING

Settings



OFF

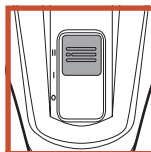
Slide switch to the bottom to turn off power. To begin vacuuming, slide switch to the appropriate setting.



SETTING I

Bare Floor/Small Area Rugs

The brushrolls spin slowly to clean bare floors and delicate area rugs.



SETTING II

Carpet

The brushrolls spin faster to pick up debris below the surface of your carpets.

NOTE: For deep cleaning per ASTM F 608 (embedded dirt in carpets) please use Setting II, Carpet.

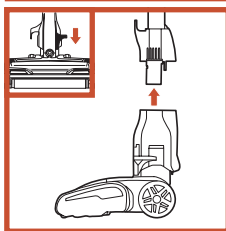
NOTE: Select Carpet for stuck-on dust and debris.

Upright Mode



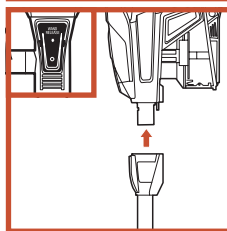
To clean floors, place foot on floor nozzle and tilt handheld vacuum back.

Above-Floor with Wand



Stand the vacuum upright. Step on the foot pedal on the bottom left side of the floor nozzle and pull the wand up to disconnect it. Great for cleaning baseboards, ceiling fans, window sills, etc.

Above-Floor with Handheld

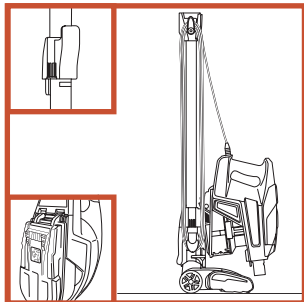


Press the **WAND RELEASE** button and lift the handheld vacuum off the wand. Great for cleaning stairs and furniture.

NOTE: All accessories are compatible with both the wand and the handheld vacuum. Use Setting I for all above-floor accessories.

STORAGE

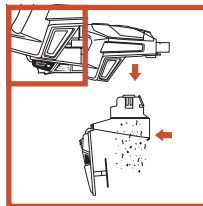
Onboard Hook



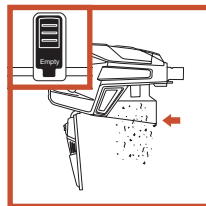
Hang the handheld vacuum on the hook on the bottom of the wand, and wrap the power cord around the cord hooks.

DUST CUP

Empty dust cup every time debris reaches the MAX fill line.



To remove the dust cup from the handheld vacuum, squeeze the two Dust Cup Release buttons at the same time and pull out the dust cup. Press the Empty button on the front of the dust cup.

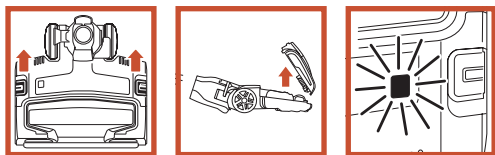


With the dust cup attached to the handheld vacuum, press the Empty button on the front of the dust cup.

MAINTENANCE

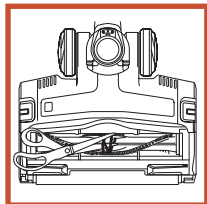
Brushroll/Soft Roller Access

1. To open the brushroll garage, slide both release buttons on the floor nozzle away from you, towards the back of the nozzle, then lift off the lid.
2. To close the brushroll garage, insert the 3 tabs on top of lid into the 3 slots in the nozzle, then push down on both sides of lid until it clicks securely into place. If Brushroll Indicator Light isn't green and headlights are flashing, check again that both sides of lid are locked in place.



Brushroll Maintenance

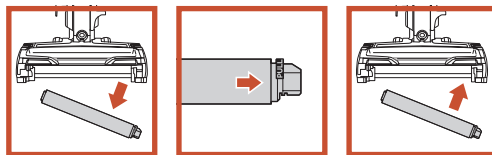
With the garage lid removed, carefully clear away any debris that may be impeding the brushroll.



NOTE: If you see any hair wrapped around the brushroll, continue cleaning, using Setting II, Carpet, on bare floors. This will allow Zero-M* technology to remove the hair wrap and send it to the dust cup.

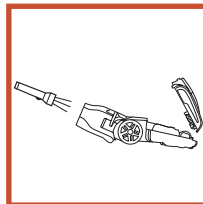
Cleaning the Soft Roller

Lift out the Soft Roller by pulling the tab on the right side. Clear away any debris, then slide the Soft Roller back into place.



Checking the Nozzle for Blockages

Tilt neck of nozzle back to straighten the airway, then remove any blockages.



For questions or to register your product, visit us online at sharkclean.com

