

Shark[®]

Shark Easy Spray™ Steam

SK115

OWNER'S GUIDE



IMPORTANT SAFETY INSTRUCTIONS

For Household Use Only

WHEN USING YOUR SHARK® Easy Spray™ STEAM MOP, BASIC SAFETY PRECAUTIONS SHOULD ALWAYS BE FOLLOWED, INCLUDING THE FOLLOWING:

READ ALL INSTRUCTIONS BEFORE USING YOUR SHARK® EASY SPRAY™ STEAM MOP.



DANGER OF SCALDING.

Please use caution when using the steam mop. The steam emitted from the openings is very hot.

POLARIZED PLUG:

This appliance has a polarized plug (one blade is wider than the other). As a safety feature, this plug will fit into a polarized outlet only one way. If the plug does not fit fully into the outlet, reverse the plug. If it still does not fit, contact a qualified electrician. **Do not attempt to defeat this safety feature.**

CAUTION:

Keep all **Shark®** branded cleaners out of the reach of children.

Eye irritant. Should some of the **Shark®** branded cleaners be rubbed or splashed into the eyes, wash out thoroughly with water. If irritation continues, contact a physician.

In case of ingestion, drink 16 FL. oz. (2 cups) of water.

WARNING:

TO REDUCE THE RISK OF FIRE, ELECTRIC SHOCK OR INJURY:

1. Use the system only for its intended use.
2. **DO NOT** use outdoors.
3. **DO NOT** leave the appliance unattended when plugged in. Always unplug the power cord from the electrical outlet when not in use and before servicing.
4. **DO NOT** allow the appliance to be used as a toy. Close attention is necessary when used by or near children, pets or plants.
5. **CAUTION - Shock Hazard.** To provide continued protection against shock, disconnect from power supply when not in use.
6. Use only as described in this manual.
7. Use only manufacturer's recommended accessories.
8. **DO NOT** use with damaged cord or plug. If the appliance is not working as it should, has been dropped, damaged, left outdoors, or dropped into water, return the appliance to EURO-PRO Operating LLC for examination and repair. Incorrect re-assembly or repair can cause a risk of electrical shock or injury to persons when the appliance is used.
9. To protect against a risk of electric shock, **DO NOT** immerse the steam mop into water or any other liquids.
10. **DO NOT** handle plug or steam mop with wet hands or operate appliance without shoes.
11. **DO NOT** pull or carry by power cord, use power cord as handle, close a door on the power cord, or pull the power cord around sharp edges or corners. Keep power cord away from heated surfaces.



TOLL FREE: 1-800-798-7398

12. **DO NOT** unplug by pulling on power cord. To unplug, grasp the plug not the power cord. Do not use extension cords or outlets with inadequate current carrying capacity.
13. **DO NOT** put any objects into openings. Do not use with any opening blocked.
14. **DO NOT** put hands or feet under the steam mop. Unit gets very hot.
15. Use **ONLY** on flat, stable horizontal surfaces. Do not use on walls, counters, windows, chairs or tables.
16. **DO NOT** use on leather, wax polished furniture or floors, synthetic fabrics, velvet or other delicate, steam sensitive materials.
17. **DO NOT** use for space heating purposes.
18. **DO NOT** add cleaning solutions, scented perfumes, oils or any other chemicals to the water used in this appliance as this may damage the unit or make it unsafe for use. If you live in a hard water area, we recommend using distilled water in your steam mop.
19. When in use, NEVER turn the appliance over or on its side. **NEVER DIRECT STEAM TOWARDS PEOPLE, ANIMALS OR PLANTS.**
20. Carefully remove the cleaning pad immediately after you have unplugged and allowed the product to cool.
21. When cleaning the steam mop, unplug the power cord from the electrical outlet and clean with a dry or damp cloth. Do not pour water or use alcohol, benzene or paint thinner on the unit.
22. To reduce the risk of fire, **DO NOT** use a flammable or combustible liquid to clean a floor.
23. Extreme caution should be exercised when using this appliance to clean stairs.
24. Never use steam mop without a cleaning pad attached.
25. Keep your work area well lit.
26. Store steam mop indoors in a cool, dry place.
27. To avoid circuit overload, do not operate another appliance on the same socket (circuit) as the steam cleaner.
28. If an extension cord is absolutely necessary, an extension cord rated a minimum of 15 ampere, 14 gage cord should be used. Cords rated for less amperage may overheat. Care should be taken to arrange cord so that it cannot be pulled or tripped over.
29. **DO NOT** leave unattended when the system is connected to a power supply or electrical outlet. Turn off all controls before unplugging the unit.
30. **DO NOT** store unit with a damp or wet cleaning pad attached. Never leave the steam mop in one spot on any surface for any period of time with a damp or wet cleaning pad attached as this will damage your floors.



WARNING: Your steam mop is designed to clean hard floor surfaces that will withstand high heat. Do not use on unsealed wood or unglazed ceramic floors. On surfaces that have been treated with wax or some no wax floors, the sheen may be removed by the heat and steam action. It is always recommended to test an isolated area of the surface to be cleaned before proceeding. We also recommend that you check the use and care instructions from the floor manufacturer.

SAVE THESE INSTRUCTIONS

Thank you for purchasing the Shark® Easy Spray™ Steam Mop.

This Owner's Guide is designed to help you get a complete understanding of your new steam mop. Please read it carefully and keep for future reference.

For a list of what is included with this model, refer to inside flap of box.

If you should have a question about your Shark® Easy Spray™ Steam Mop, please call the Shark® Customer service line at 800-798-7398.

THIS BOOK COVERS MODEL NUMBER:

SK115 11

REGISTER YOUR PURCHASE:

www.sharkclean.com

800.798.7398

RECORD THIS INFORMATION:

Model Number: _____

Date of Purchase (Keep receipt): _____

TECHNICAL SPECIFICATIONS:

Voltage: 120V., 60Hz

Watts: 1550W

Water Capacity: 220 ml (7.4 oz.)

RECOMMENDED SCHEDULE FOR REPLACING CLEANING PADS:

Washable Pads: Every 3 months

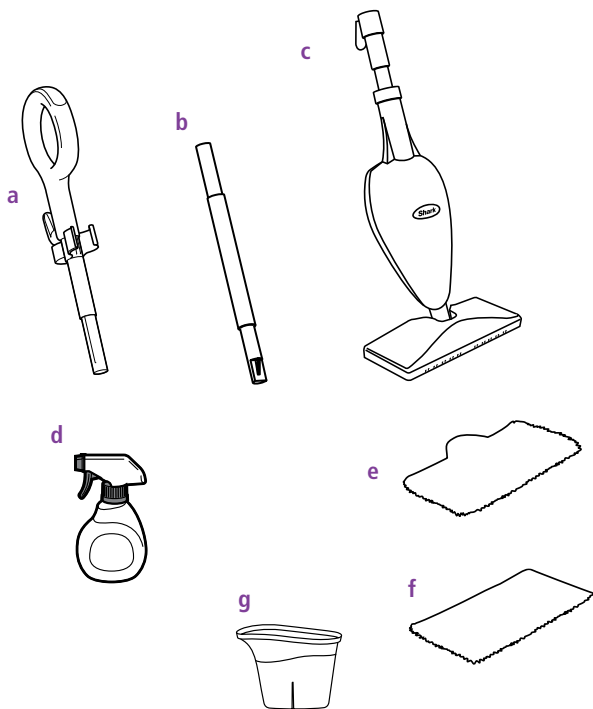
FOR BEST CLEANING PERFORMANCE
See Pad Care on page 7 for more detail.

Euro-Pro, Shark, SaniFiber, Easy Spray and Steam Energized are trademarks of Euro-Pro Operating LLC. All other brand names may be trademarks of their respective owners.



TOLL FREE: 1-800-798-7398

When assembling your Shark® Easy Spray™ steam mop there may be a little water in or around the water tank. This is because we test all our steam mops 100% before you buy them, so you get a quality Shark® Easy Spray™ Steam Mop.



**FIRST THINGS FIRST, YOU NEED TO KNOW
WHAT'S IN THE BOX YOU JUST OPENED:**

- a Upper Extension Tube with Clip
- b Lower Extension Tube
- c Steam Mop Base

- d **Shark®** Steam Energized™ General Purpose Cleanser
- e Washable Cleaning Pad
- f SaniFiber™ Disposable Pad (s)
- g Filling Flask

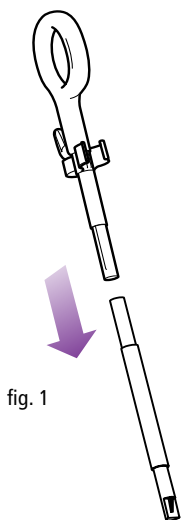


fig. 1

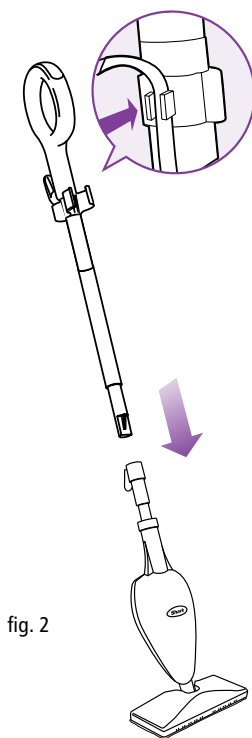
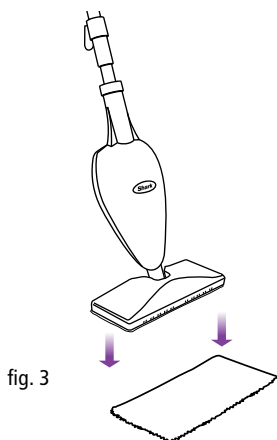


fig. 2

YOUR SHARK® EASY SPRAY™ STEAM MOP IS EASY TO ASSEMBLE

- 1 First remove all the parts from the package. We know you're excited about the Shark® Easy Spray™ Steam Mop, but don't plug it in until it's fully assembled and you've read all of the following instructions.
- 2 Slide the upper extension tube (the tube with the handle) into the lower extension tube (the short tube). Push the two extension tubes together until you hear it click into place. See illustration for a visual explanation. (fig. 1)
- 3 Insert the pieces you assembled in Step 2 into the pump actuator (the tube that leads to the tank). Push the extension tube assembly and pump actuator together in until you hear it click into place. Insert cord into cord clip on the shaft of the steam-mop. (fig. 2)

- ⚠ **IMPORTANT:** Always make sure that your Easy Spray™ Steam Mop is unplugged from the wall before you attach a cleaning pad to avoid damage to your floor and mop.
- ⚠ **IMPORTANT:** Do not use on unsealed wood or unglazed ceramic floors. On surfaces that have been treated with wax or some no wax floors, the sheen may be removed by the heat and steam action. It is always recommended to test an isolated area of the surface to be cleaned before proceeding. We recommend that you check the use and care instructions from the floor manufacturer.



ATTACHING THE CLEANING PAD

- 1 Place the cleaning pad on the floor with the logo side facing up. Place the Easy Spray™ Steam Mop on the top of the pad to attach. (fig. 3)

▲ IMPORTANT: Only add water to the tank. Chemicals or cleaning solutions may be unsafe or cause damage.

▲ IMPORTANT: Please wait 3-5 minutes for your Easy Spray™ Steam Mop to cool off before removing the cleaning pad.

▲ NOTE: Don't be alarmed if the first time you use your Easy Spray™ Steam Mop, you notice water inside the water tank or drops of water in the packaging. It's normal to see this water. Your Easy Spray™ Steam Mop was 100% tested in the factory to ensure your safety and your floor's happiness. If you see water in the unit, it's from these tests.

Replacement cleaning pads are available at www.sharkclean.com or by calling 1-800-798-7398.

USE The water tank cap has an arrow to indicate the locked and unlocked position.

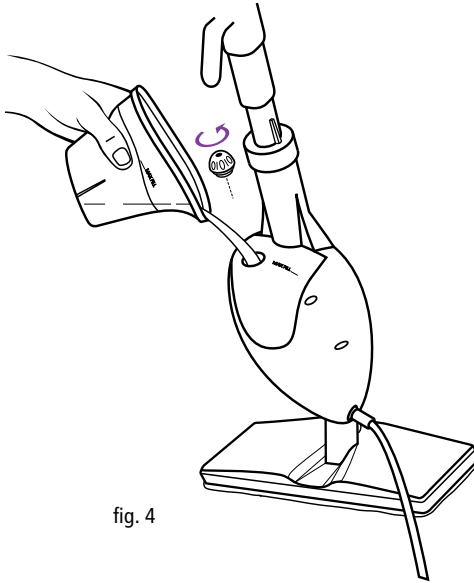


fig. 4

FILLING THE WATER TANK

⚠ IMPORTANT: Before you fill up the tank, make sure your Easy Spray™ Steam Mop is unplugged from the wall.

1 First, remove the water tank cap by turning it counter clockwise to the unlocked position. See illustration for a visual explanation. (**fig. 4**)

2 The filling flask included with your Easy Spray™ Steam Mop makes filling the water tank as simple as getting a glass of water from the sink. Fill the flask with water and pour it into the tank. Be sure to keep the water under the MAX FILL line; just one flask of water is enough for your Easy Spray™ Steam Mop. See illustration for a visual explanation.

3 Replace the water tank cap by turning it clockwise to the locked position.

Now comes the part you've been waiting for – it's time to use your Easy Spray™ steam mop. When you use your steam mop for the first time or haven't used the unit in awhile, it may take a minute or two for the water to make its way through the pump and into the heater to create steam. Get it started by pumping the handle a few times. If you've waited a few minutes and you still don't see any steam, reference the troubleshooting section on page 8.

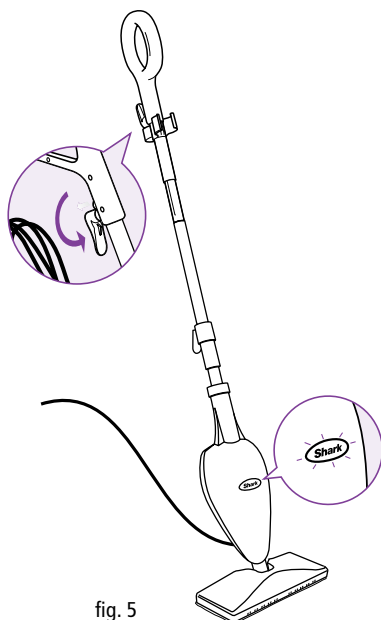


fig. 5

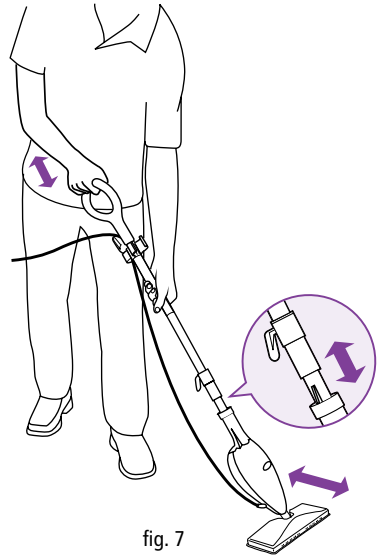
⚠ IMPORTANT: Your Easy Spray™ Steam Mop needs water to make steam! Never use your Easy Spray™ Steam Mop without water in the tank.

Sweep or vacuum your floors before using your Easy Spray™ Steam Mop. Your Easy Spray™ Steam Mop was designed to get rid of stuck-on gunk, grime, paw/footprints and it will do a better job if yesterday's cereal crumbs aren't in the way.

Visit www.sharkclean.com for other great quick cleaning products to complement your Easy Spray™ Steam Mop.

- 1 Pull and twist the quick release cord holder to unwrap the power cord completely. Plug into an electrical outlet. The LED light around the Shark® logo will turn on. Success! If your light doesn't turn on reference the Troubleshooting section on page 8. (fig. 5)

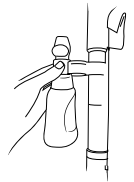
When your Easy Spray™ Steam Mop stops steaming, it could be out of water. Unplug the power cord from the electrical outlet and refill the water tank at anytime.



- 2 Spray the **Shark®** Steam Energized™ Cleanser freely on the mess or stain you aim to clean. (fig. 6)
- 3 It takes about 30 seconds for the steam to get going. Now pump the handle a few times to prime the pump and activate steam.
- 4 Mop with a forward and backward motion to customize steam output automatically. (fig. 7)

IMPORTANT: Never leave the Easy Spray™ Steam Mop with a damp/wet cleaning pad on any floor surface for any amount of time as this may damage the floor.

- 5 When not using the cleanser, clip the spray bottle to the handle of the steam mop. The spray bottle will stay secure during mop usage.



Always remove the cleaning pad from the Easy Spray™ Steam Mop head when you store your Easy Spray™ Steam Mop to avoid damage to your floors.



KEEPING YOUR CLEANING PAD AS GOOD AS NEW

Your steam activated cleaning pad works wonders for you, so return the favor by giving it the care it deserves.

- 1 Wash pads in warm water. Wash separately from other laundry.

Only use liquid detergent. (no powder detergent)
Don't use any fabric softeners.

Line dry or dry on a low dryer setting.

- 2 If there are loose threads on the pad careful cut the thread with scissors. Don't pull on them or cut at the base.

KEEPING YOUR EASY SPRAY™ STEAM MOP IN TIP-TOP SHAPE

If you love your Easy Spray™ Steam Mop, let it show. Caring for your Easy Spray™ Steam Mop and properly storing it means you'll get the same super steam action you expect each time you use it.

- ⚠ **IMPORTANT:** Both your Easy Spray™ Steam Mop and the water inside it can get very hot, so let it cool down completely before you store it.
- ⚠ **IMPORTANT:** Always store the Easy Spray™ Steam Mop in a safe place away from children and high traffic areas.
- ⚠ **NOTE:** It's a good idea to use distilled water in your tank to help prolong the life of your Easy Spray™ Steam Mop, especially if you live in an area with hard water.

PROBLEM	POSSIBLE REASONS & SOLUTIONS
The Easy Spray™ Steam Mop will not turn-on.	<p>Your steam-mop should be securely plugged into an electrical outlet only. Check your fuse or breaker.</p> <p>If your unit still doesn't work, give us a call 1-800-798-7398.</p>
Easy Spray™ Steam Mop will not make steam.	<p>Is there water in the water tank? If not, add water to your Steam Mop following instructions.</p>
Easy Spray™ Steam Mop leaves water on the floor.	<p>Do not leave the steam mop on the floor with a damp cleaning pad.</p> <p>If you are using tap water, we recommend switching to distilled water.</p> <p>Make sure that the cap is securely placed on the water tank.</p>
Easy Spray™ Steam Mop left white spot on the floor.	<p>Check to see if the cleaning pad is soaked through. We recommend that you unplug the unit and replace the cleaning pad.</p>
Floors are cloudy, streaky or spotty after steaming.	<p>The cleaning pad may be dirty. Change cleaning pad.</p> <p>The mop may have been left in one spot for too long.</p> <p>This may be leftover from past cleaners used on the floor surface. Use the mop a few more times again with a clean pad and see if the cloudiness is removed. If this does not work, we suggest rinsing the floor with water, letting it dry and then steam mopping again with a clean pad. One of more rinses generally removes the residue. A more stubborn case may require you to rinse the floor with a mix of one part vinegar and two parts water.</p>
Easy Spray™ Steam Mop is hard to push.	<p>Make sure the cleaning pad is on properly.</p> <p>Check to see if the cleaning pad is excessively dirty. If so, replace with a clean pad.</p>

NOTE: Select cleaning accessories are included. Others are available for purchase at www.SharkClean.com or by calling 800.798.7398.

For a list of what is included with this model, refer to inside flap of box.

ACCESSORY

Shark® Steam Energized™ Cleanser

Combine Steam & Cleanser for a superior level of cleaning performance.



XSTENER10

Washable Cleaning Pads

Wipes out tough messes. Keeps cleaning room after room. Lasts up to 20 washes! Unique bumper design for enhanced edge cleaning.



P141GHF

SaniFiber™ Disposable Cleaning Pads

The **ONLY** disposable pads with the cleaning performance of a washable!



DXT100



ONE (1) YEAR LIMITED WARRANTY

EURO-PRO Operating LLC warrants this product to be free from defects in material and workmanship for a period of one (1) year from the date of the original purchase, when utilized for normal household use, subject to the following conditions, exclusions and exceptions.

If your appliance fails to operate properly while in use under normal household conditions within the warranty period, return the complete appliance and accessories, freight prepaid. For Customer Service support, call 1 (800) 798-7398 or visit our website www.sharkclean.com.

If the appliance is found to be defective in material or workmanship, **EURO-PRO Operating LLC** will repair or replace it free of charge. Proof of purchase date and \$ 19.95 to cover the cost of return shipping and handling must be included. *

The liability of **EURO-PRO Operating LLC** is limited solely to the cost of the repair or replacement of the unit at our option. This warranty does not cover normal wear of parts and does not apply to any unit that has been tampered with or used for commercial purposes. This limited warranty does not cover damage caused by misuse, abuse, negligent handling or damage due to faulty packaging or mishandling in transit. This warranty does not cover damage or defects caused by or resulting from damages from shipping or repairs, service or alterations to the product or any of its parts, which have been performed by a repair person not authorized by **EURO-PRO Operating LLC**.

This warranty is extended to the original purchaser of the unit and excludes all other legal and/or conventional warranties. The responsibility of **EURO-PRO Operating LLC** warranty if any, is limited to the specific obligations expressly assumed by it under the terms of the limited warranty. **In no event is EURO-PRO Operating LLC** liable for incidental or consequential damages of any nature whatsoever. Some states/provinces do not permit the exclusion or limitation of incidental or consequential damages, so the above may not apply to you.

This warranty gives you specific legal rights, and you may also have other rights which vary from state to state or province to province.

***Important: Carefully pack item to avoid damage in shipping. Be sure to include proof of purchase date and to attach tag to item before packing with your name, complete address and phone number with a note giving purchase information, model number and what you believe is the problem with the item. We recommend you insure the package (as damage in shipping is not covered by your warranty). Mark the outside of your package "ATTENTION CUSTOMER SERVICE". We are constantly striving to improve our products, therefore the specifications contained herein are subject to change without notice.**

Product Registration

Please visit www.sharkclean.com or call 1-800-798-7398 to register your new **Shark®** product within ten (10) days of purchase. You will be asked to provide the store name, date of purchase and model number along with your name and address.

The registration will enable us to contact you in the unlikely event of a product safety notification. By registering you acknowledge to have read and understood the instructions for use, and warnings set forth in the accompanying instructions.

EURO-PRO Operating LLC

U.S.: Newton, MA 02459

Canada: Ville St. Laurent, Québec H4S 1A7

1-800-798-7398

www.sharkclean.com

COPYRIGHT © 2013 EURO-PRO OPERATING LLC

PRINTED IN CHINA

Euro-Pro, Shark, SaniFiber, Easy Spray and Rotator are trademarks of Euro-Pro Operating LLC.

SK115.E.131223.1

Illustrations may differ from actual product.