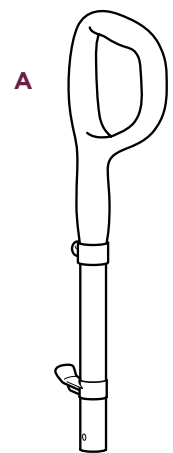
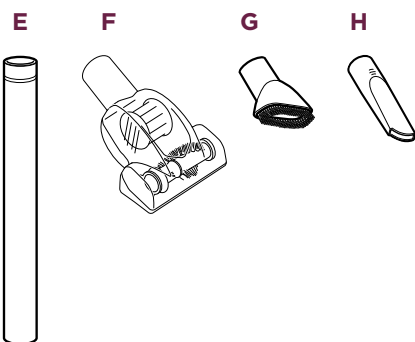
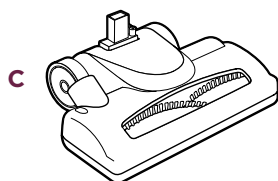
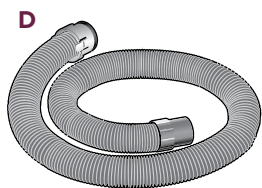
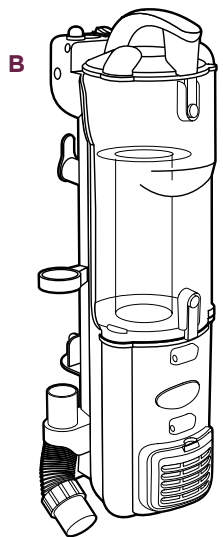


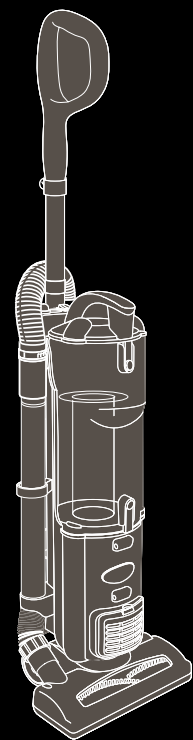
WHAT'S INSIDE



- A** Handle Assembly
- B** Vacuum Body
- C** Motorized Floor Nozzle
- D** Super Stretch Hose
- E** Cleaning Wand
- F** Pet Power Brush
- G** Dusting Brush
- H** 5" Compact Crevice Tool



For additional parts and accessories, visit sharkaccessories.com



Shark

For questions or to register your product, contact us at
1-800-798-7398 or visit us online at sharkclean.com



@sharkcleaning

©2017 SharkNinja Operating LLC. SHARK and SHARK NAVIGATOR are registered trademarks of SharkNinja Operating LLC. NAVIGATOR and JOIN THE CLEAN EVOLUTION are trademarks of SharkNinja Operating LLC.

NV41_170127

Please be sure to read the enclosed Shark® Owner's Guide prior to using your unit.

Shark®

Navigator™

DELUXE

NV41

QUICK START GUIDE

Use this Quick Start Guide
to learn about your new
vacuum's great features.



Join The Clean Evolution.™

When it comes to
cleaning, we're not afraid
to get our hands dirty.
At Shark®, we're constantly
working to evolve and
innovate products to meet
the needs of people like
you. Because our job is
to make 5-star-worthy
products that make your
life a whole lot easier.

HAVING TROUBLE?

ISSUE

Vacuum is not picking up debris. No suction or light suction.

Solution

Empty dust cup, clean filters, check all openings for blockages.

ISSUE

Vacuum lifts area rugs.

Solution

Turn off the unit to disengage the brushroll and restart with the Power slider switch.

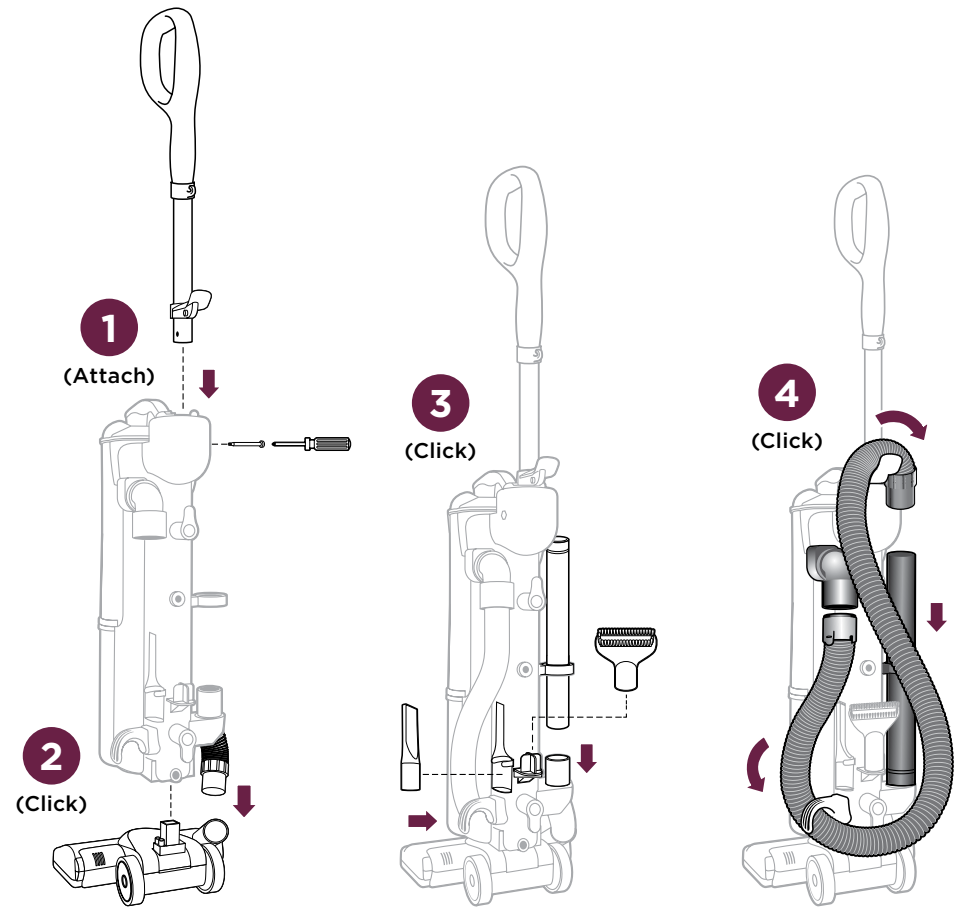
ISSUE

Brushroll and/or Soft Roller does not spin. The Brushroll Indicator Light on the floor nozzle turns red.

Solution

Turn off and unplug the vacuum immediately. Remove any blockages, then reconnect and turn vacuum back on. If Brushroll Indicator Light on the floor nozzle is green, the blockage has been successfully cleared. If the light is still red, please contact customer service at 1-800-798-7398.

ASSEMBLY



Attach handle assembly to vacuum body with screw, then connect body to motorized floor nozzle.

Store accessories on the posts on the vacuum body.

Connect hose to back of vacuum body, pressing until it clicks into place. To use an accessory, connect it to other end of hose.

BARE FLOOR AND CARPET CLEANING

Choose Floor Setting.



Off

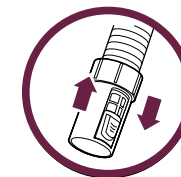


Bare Floors



Carpets

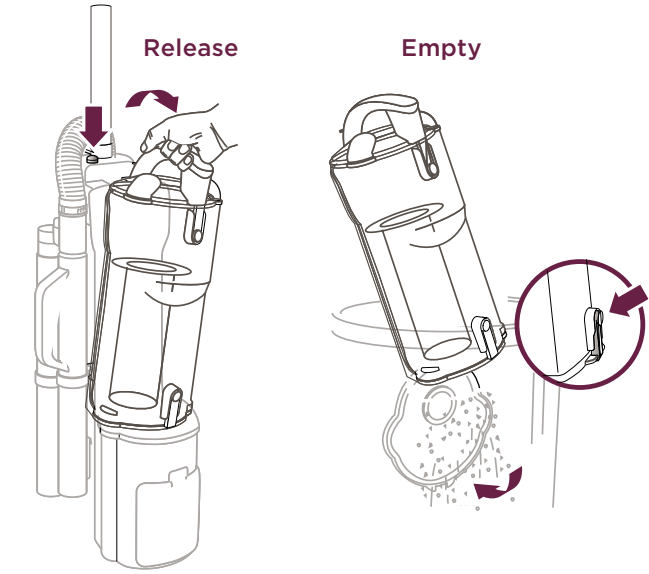
Pull handle toward you to release the motorized floor nozzle and engage the brushroll.



Adjust suction as needed by turning the controller on the handle.

MAINTENANCE

Empty dust cup after each use



TIP:

Wash filters every 3 months to keep the suction strong.

Rinse filters and allow them to air-dry completely. Tap loose dirt from foam filters as needed between washes.

Note: The foam filters may discolor over time. This is normal.

