

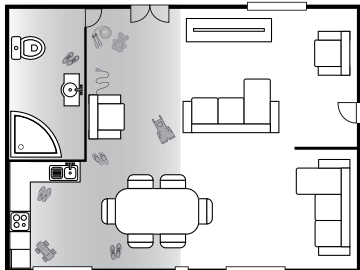
Please be sure to read the enclosed Shark® Owner's Guide prior to using your robot.

## TIPS AND TRICKS FOR GREAT PERFORMANCE

Your Shark ION™ Robot is designed with **Smart Sensor** technology so it can maneuver around obstructions and navigate its way out of tight spaces as it cleans. During your first few cleanings, you may need to make some small adjustments to optimize your robot's performance.

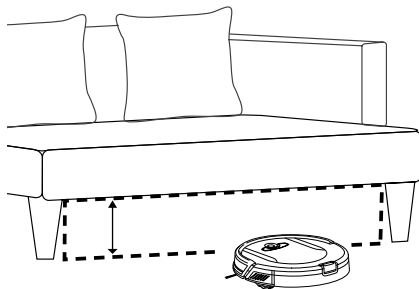
### STEP 1 CORDS AND OBSTRUCTIONS

Always prep your home before cleaning. Some furniture or loose cords may create problems for your robot. Clear away cords and obstructions or block off the area with the included BotBoundary™ strips.



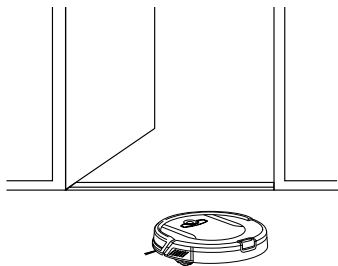
### STEP 2 LOW-CLEARANCE FURNITURE

Your robot may find its way under furniture with low clearance, but not be able to free itself. Use furniture risers to increase clearance, or create a no-go zone with BotBoundary strips.



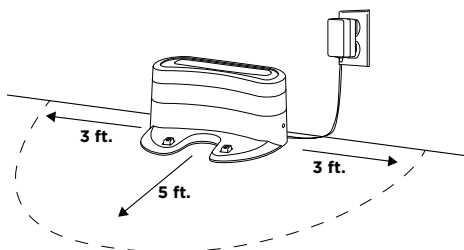
### STEP 3 DOORWAY THRESHOLDS

Your robot can easily climb over most common thresholds. However, in some situations they may present a challenge. Use BotBoundary strips to block off these areas.



### STEP 4 RETURNING TO DOCK

Make sure the dock is set up as shown. If your robot roams too far, it could have trouble finding the dock. It may be helpful to block off part of your home with BotBoundary strips, or to add a second dock (available at [sharkaccessories.com](http://sharkaccessories.com))



# Shark ION™ ROBOT

Don't forget to register your robot at [registryourshark.com](http://registryourshark.com)

Please be sure to read the enclosed Shark® Owner's Guide prior to using your unit.

For assistance, visit us online at [sharkclean.com](http://sharkclean.com) or contact us at 800-798-7398

©2018 SharkNinja Operating LLC. SHARK is a registered trademark of SharkNinja Operating LLC.  
BOTBOUNDARY and SHARK ION are trademarks of SharkNinja Operating LLC.

