

IMPORTANT SAFETY INSTRUCTIONS

When using electrical appliances with heat, especially when children are present, basic safety precautions should always be followed, including the following:

FOR HOUSEHOLD USE ONLY

READ ALL INSTRUCTIONS BEFORE USING—SAVE THESE INSTRUCTIONS

WARNINGS: KEEP AWAY FROM WATER

DANGER—As with most electrical appliances, electrical parts are electrically live even when the switch is off.

⚠WARNING

To reduce the risk of death by electric shock:

1. Always unplug the unit immediately after using.
2. Do not use while bathing.
3. Do not place or store appliance where it can fall or be pulled into a tub or sink.
4. Do not place in or drop into water or other liquid.
5. If an appliance falls into water, unplug the unit immediately. Do not reach into the water.

⚠WARNING

To reduce the risk of burns, electrocution, fire, or injury to persons:

1. An appliance should never be left unattended when plugged in.
2. Close supervision is necessary when this appliance is used by, on, or near children or individuals with certain disabilities.
3. Use this appliance only for its intended use as described in this manual. Do not use attachments not recommended by the manufacturer.
4. Never operate this appliance if it has a damaged cord or plug, if it is not working properly, or if it has been dropped, damaged, or dropped into water. If it has a damaged cord or plug, contact Customer Service at 855-522-0912.
5. Keep the cord away from heated surfaces.
6. Do not wrap the cord around the appliance.
7. Never block the air openings of the appliance or place it on a soft surface, such as a bed or couch, where the air openings may be blocked. Keep the air openings free of lint, hair, and the like.

8. Never use while sleeping.
9. Never drop or insert any object into any opening.
10. Do not use outdoors or operate where aerosol (spray) products are being used or where oxygen is being administered.
11. Do not use an extension cord with this appliance.
12. Do not direct hot air toward eyes or other heat-sensitive areas.
13. Attachments may be hot during use. Allow them to cool before handling.
14. Do not place appliance on any surface while it is operating.
15. While using the appliance, keep your hair away from the air inlets.
16. Do not operate with a voltage converter.
17. Only use the appliance with the voltage, frequency and power shown on the rating label on the product. For additional protection, use on outlets with GFCI. Ask your electrician for advice.
18. Do not use this appliance on hair extensions or wigs unless recommended by the hair extension or wig manufacturer.
19. If hair styling product is being used in conjunction with this appliance please read and follow all of the hair styling product safety warnings and instructions before use.
20. In a double-insulated appliance, two systems of insulation are provided instead of grounding. No grounding means is provided on a double-insulated appliance, nor should a means for grounding be added to the appliance. Servicing a double-insulated appliance requires extreme care and knowledge of the system, and should be done only by qualified service personnel. Replacement parts for a double-insulated appliance must be identical to the parts they replace. A double-insulated appliance is marked with the words "DOUBLE INSULATION" or "DOUBLE INSULATED." The symbol (square within a square) may also be marked on the appliance.

SAVE THESE INSTRUCTIONS

For accessories and replacement parts,
visit sharkclean.com/accessories



SCAN QR CODE FOR
FULL INSTRUCTIONS,
WARRANTY INFORMATION,
AND HOW-TOS

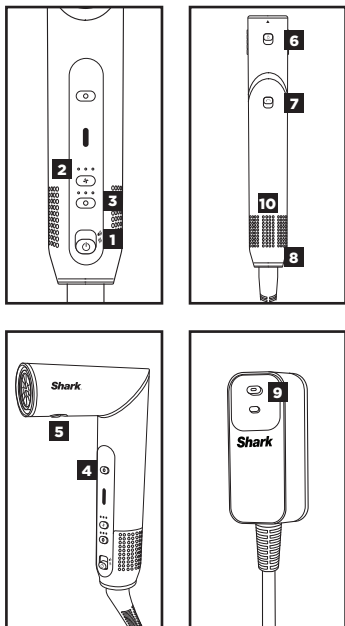
OPERATING INSTRUCTIONS

1. Turn the styler on and off by toggling the 3-position switch. Wet Hair drying and styling is at the top of the toggle and Dry Hair styling/refresh is in the middle of the toggle.
2. Adjust the airflow. Pressing the button allows you to choose a low, medium, or high airflow.
3. Adjust the temperature. Pressing the button allows you to choose no heat, low, medium, or high temperature. For Scalp Shield, press and hold Temperature button for 2 seconds.

Wet-or-Dry Fusion Accessory Plate Temperatures

WET MODE	High - 120°C (248°F)	Med - 110°C (230°F)	Low - 100°C (212°F)
DRY MODE	High - 220°C (428°F)	Med - 200°C (392°F)	Low - 180°C (356°F)

4. Press and hold the Cool Shot button for a cool burst of air to set your style.
5. To attach any accessory included with your styler, line up the open arrow on the back of the accessory with the arrow on the back of the styler. Press and twist the accessory into the styler's nozzle toward the left so the solid arrow on the accessory lines up with the arrow on the back of the styler. The accessory is properly attached when it clicks into place.
6. To remove an accessory from the styler, slide the top lock down, then lift and simultaneously twist the accessory to the right and lift it off the styler's nozzle by holding onto the cool touch points. To detach the Fusion Air Straightener, it is recommended to hold the styler in your left hand while using your right hand to unlock and remove the Fusion Air Straightener at the same time. Your thumb will pull down the lock while your hand twists and pulls up to release.
7. To change from styling wand mode to hair dryer mode, slide down the lock and rotate the nozzle left. Keep rotating the nozzle until it clicks into place in hair dryer mode. To change from hair dryer mode to styling wand mode, slide down the lock and rotate the nozzle right.
8. To remove the filter cover, slide it off the bottom of the unit. To attach the filter cover, slide it back on to the bottom of the unit until it clicks in place.
9. Press the ALCI button to rest the dryer. See Troubleshooting & Error Codes for more information.
10. Rating label location.



TROUBLESHOOTING & ERROR CODES

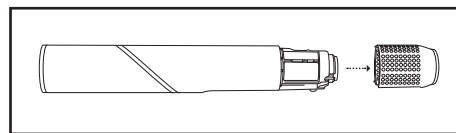
MAINTENANCE/CLEANING

Reduction in Airflow.

Make sure you are not covering the filter cover with your hand when operating the unit. This will block the air inlet, which could cause a reduction in airflow. A change in airflow or air power, airflow blockages, and/or visible buildup on the inlet at the bottom of the unit could also indicate your unit needs to be cleaned. To maintain performance, clean the filter at the bottom of the unit every month, using a new toothbrush.

Removing the Filter

1. Turn off the device and unplug it. Slide the filter cover off the bottom of the unit.



Cleaning the Filter

1. Wipe down the filter with a dry microfiber cloth or a new toothbrush to remove the debris.
2. To reinstall the filter cover, slide it back on to the bottom of the device until it clicks into place.

Maintaining Fusion Accessory Connection Pins.

Keep pins clean for best performance. If you notice any debris on accessory pins, wipe clean with a dry cloth. Do not rest accessories on wet surfaces. Ensure pins are clean before every use.

ALCI OPERATION

Electricity flickers or trips circuit breaker during use.

This dryer is equipped with an Appliance Leakage Circuit Interrupter (ALCI), a safety feature that renders it inoperable under abnormal conditions. Should the dryer turn off in use, press the red Reset button on the plug and the dryer should function normally. If the dryer does not reset, please check your circuit breaker. If the issue persists, ensure there are no other appliances plugged in within the room where the dryer is being used. Do not use the dryer with a power strip.

OVERHEATING

Hair dryer is overheating or shuts off.

This unit is equipped with a temperature-protective thermostat. If for some reason your hair dryer overheats, the thermostat will automatically turn the unit off. To prevent power-down recurrence, unplug the hair dryer and set it aside to cool, or cool down using the Cool Shot button during use. Overheating may result if the unit is powered on for a long duration, or can indicate a blockage or dust buildup. To prevent overheating, clean the filter at the bottom of the unit every month, using a new toothbrush. Make sure you are not covering the filter with your hand when operating the unit, as this could also cause overheating. If overheating continues to occur, contact Customer Service at 855-522-0912.

For further operating instructions, scan the QR code on the cover of this booklet.

Storage, Cord Safety, and Maintenance/Cleaning:

- Ensure the cord is not knotted, twisted, or wrapped around any nearby objects when in use.
- Store the unit in a dry location away from water and other heat sources. Store brush accessories so the bristles are not touching any surfaces to help prevent bristle damage.
- Clean the filter at the bottom of the unit monthly. To clean the filter, first slide the filter cover off the bottom of the unit. Then use a new toothbrush to brush off any dust or debris on the filter. Once the filter is clean, slide the filter cover back on the unit until it clicks in place.
- Remove any hair on the brush accessories after every use to help maintain performance.

OVERHEATING ERROR CODE



If you are experiencing a different error code, please **scan the QR code** for additional troubleshooting or contact Customer Service at **855-522-0912**.

TWO (2) YEAR LIMITED WARRANTY

The Two (2) Year Limited Warranty applies to purchases made from authorized retailers of SharkNinja Operating LLC. Warranty coverage applies to the original owner and to the original product only and is not transferable.

SharkNinja warrants that the unit shall be free from defects in material and workmanship for a period of two (2) years from the date of purchase when it is used under normal household conditions and maintained according to the requirements outlined in the Owner's Guide, subject to the following conditions and exclusions:

What is covered by this warranty?

1. The original unit and/or non-wearable parts deemed defective, in SharkNinja's sole discretion, will be repaired or replaced up to two (2) years from the original purchase date.
2. In the event a replacement unit is issued, the warranty coverage ends six (6) months following the receipt date of the replacement unit or the remainder of the existing warranty, whichever is later. SharkNinja reserves the right to replace the unit with one of equal or greater value.

What is not covered by this warranty?

1. Normal wear and tear of wearable parts (such as accessories), which require regular maintenance and/or replacement to ensure the proper functioning of your unit, are not covered by this warranty. Replacement parts are available for purchase at [sharkbeauty.com](#).
2. Any unit that has been tampered with or used for commercial purposes.
3. Damage caused by misuse, abuse, negligent handling, failure to perform required maintenance (e.g., failure to keep the well of the motor base clear of food spills and other debris), or damage due to mishandling in transit.
4. Consequential and incidental damages.
5. Defects caused by repair persons not authorized by SharkNinja. These defects include damages caused in the process of shipping, altering, or repairing the SharkNinja product (or any of its parts) when the repair is performed by a repair person not authorized by SharkNinja.
6. Products purchased, used, or operated outside North America.

How to get service

If your appliance fails to operate properly while in use under normal household conditions within the warranty period, visit [sharkbeauty.com](#) for product care and maintenance self-help. Our Customer Service Specialists are also available at **855-522-0912** to assist with product support and warranty service options, including the possibility of upgrading to our VIP warranty service options for select product categories. So we may better assist you, please register your product online at [registeryourshark.com](#) and have the product on hand when you call.

SharkNinja will cover the cost for the customer to send in the unit to us for repair or replacement. A fee of \$20.95 (subject to change) will be charged when SharkNinja ships the repaired or replacement unit.

How to initiate a warranty claim

You must call **855-522-0912** to initiate a warranty claim. You will need the receipt as proof of purchase. We also ask that you register your product online at [registeryourshark.com](#) and have the product on hand when you call, so we may better assist you. A Customer Service Specialist will provide you with return and packing instruction information.

How state law applies

This warranty gives you specific legal rights, and you also may have other rights that vary from state to state. Some states do not permit the exclusion or limitation of incidental or consequential damages, so the above may not apply to you.



FCC WARNINGS

This equipment has been tested and found to comply with the limits for a Class B digital device, pursuant to parts 15 of the FCC Rules. These limits are designed to provide reasonable protection against harmful interference in a residential installation.

This equipment generates, uses, and can radiate radio frequency energy and, if not installed and accordance with the instructions, may cause harmful interference to radio communications. However, there is no guarantee that interference will not occur in a particular installation. If this equipment does cause harmful interference to radio or television reception, which can be determined by turning the equipment off and on, the user is encouraged to try to correct the interference by one or more of the following measures:

1. Reorient or relocate the receiving antenna.
2. Increase the separation between the equipment and receiver.
3. Connect the equipment into an outlet on a circuit different from that to which the receiver is connected.
4. Consult the dealer or an experienced radio/TV technician for help.

This device complies with part 15 of the FCC rules.

Operation is subject to the following conditions:

1. This device may not cause harmful interference.
2. This device must accept any interference received, including interference that may cause undesired operation.

Changes or modifications not expressly approved by the party responsible for compliance could void the user's authority to operate this device.

ISED Statement

This device complies with Industry Canada license-exempt RSS standard(s). Operation is subject to the following two conditions: (1) this device may not cause interference, and (2) this device must accept any interference, including interference that may cause undesired operation of the device.