

# IMPORTANT SAFETY INSTRUCTIONS

HOUSEHOLD USE ONLY

## **⚠ WARNING**

**TO REDUCE THE RISK OF FIRE, ELECTRIC SHOCK, OR INJURY:**

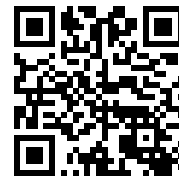
**READ ALL THESE INSTRUCTIONS BEFORE USE.**

1. This appliance has a polarized plug (one blade is wider than the other). To reduce the risk of electric shock, this plug is intended to fit in a polarized outlet only one way. If the plug does not fit fully in the outlet, reverse the plug. If it still does not fit, contact a qualified electrician. Do not attempt to defeat this safety feature. Unplug or disconnect the appliance from the power supply before servicing.
2. **DO NOT** operate any unit with a damaged cord or plug. Discard the unit or return to an authorized service facility for examination and/or repair.
3. **DO NOT** run cord under carpeting. **DO NOT** cover cord with throw rugs, runners, or similar coverings. **DO NOT** route cord under furniture or appliances. Keep cord away from high traffic areas where it will not be tripped over.
4. If the power cord is damaged, it must be replaced by the manufacturer, its service agent, or similarly qualified persons in order to avoid a hazard.
5. This appliance should only be placed on flat and dry surfaces.
6. This appliance is not intended for use by anyone (including children) with reduced physical, sensory or mental capabilities, or lack of experience and knowledge, unless they have been given supervision or instruction concerning use of the appliance by a person responsible for their safety.
7. Children should be supervised to ensure that they **DO NOT** play with the appliance.
8. Cleaning and user maintenance shall not be made by children without supervision.
9. Prior to cleaning or other maintenance, the appliance must be unplugged from the electrical outlet.
10. **DO NOT** handle plug or appliance with wet hands.
11. **DO NOT** use without filter in place.
12. Only use Shark® branded filters and accessories.
13. **DO NOT** damage the power cord:
  - a) **DO NOT** pull or carry appliance by the cord or use the cord as a handle.
  - b) **DO NOT** unplug by pulling on cord. Grasp the plug, not the cord.
  - c) **DO NOT** stand the appliance on the power cord, close a door on the cord, pull the cord around sharp corners, or leave the cord near heated surfaces.
14. **DO NOT** use with any opening blocked; keep free of dust, lint, hair, and anything that may reduce airflow.
15. **DO NOT** use if airflow is restricted. If the air paths become blocked, turn the appliance off and unplug from electrical outlet. Remove all obstructions before you plug in and turn on the unit again.
16. **DO NOT** use if appliance is not working as it should, or has been dropped, damaged, left outdoors, or dropped into water.
17. **DO NOT** place appliance on unstable surfaces such as chairs or tables.
18. **DO NOT** use in the following areas:
  - a) Wet or damp surfaces.
  - b) Outdoor areas.
  - c) Spaces that are enclosed and may contain explosive or toxic fumes or vapors (lighter fluid, gasoline, kerosene, paint, paint thinners, mothproofing substances, or flammable dust).
19. Turn off all controls before plugging in or unplugging the appliance.
20. Unplug from electrical outlet when not in use and before any maintenance or cleaning.
21. Hand wash exterior/hard plastic/non-electronic parts with water only. Do not immerse. Cleaning with chemicals could damage the unit.
22. Make sure filter is in place after routine maintenance.
23. Not suitable for use with solid-state speed controls.
24. The appliance is only to be used with the power supply unit provided with the appliance.

visit [qr.sharkclean.com/hp070series](https://qr.sharkclean.com/hp070series) or

## SCAN HERE

USING YOUR SMARTPHONE CAMERA



FOR FULL INSTRUCTIONS OR  
TO PURCHASE ACCESSORIES.

---

## READ AND SAVE THESE INSTRUCTIONS

---

Please be sure to read and save the warnings on other side prior to using your air purifier.

# QUICK START GUIDE

## SETTING UP YOUR AIR PURIFIER



1. **DO NOT** plug in the air purifier. First, carefully turn the air purifier upside down and place it on a level floor surface. Rotate the filter door counterclockwise to the unlocked position to access the HEPA filter.



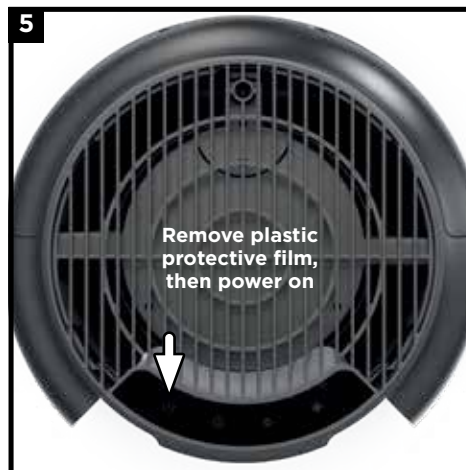
2. Take the HEPA filter out of its plastic packaging. Reinstall the HEPA filter in either orientation.



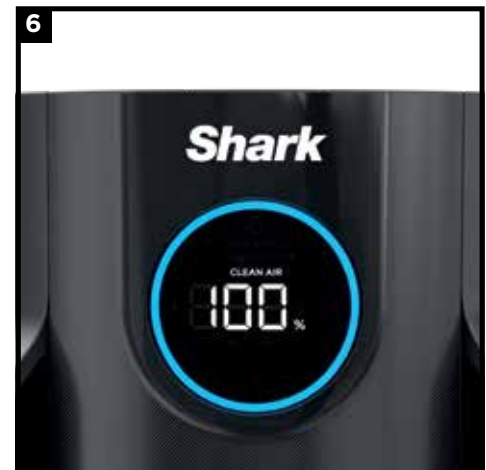
3. With the HEPA filter reinstalled, twist the filter door clockwise until it clicks into place.



4. Set up the air purifier on a level surface, at least 3 inches (8 cm) from walls and objects.



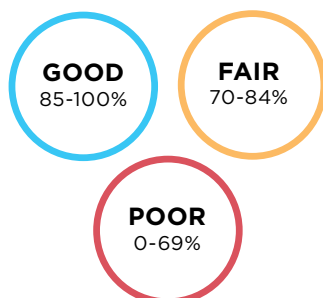
5. Carefully remove the yellow sticker on the front of the product to access the display panel. Plug the air purifier into an electrical outlet and press the power button on the top control panel.



6. When the air purifier power is on, it will begin to analyze the air quality, indicated by the rotating lights. After a few seconds, the air purifier will display the current air quality. See below for more information.

## UNDERSTANDING YOUR AIR QUALITY

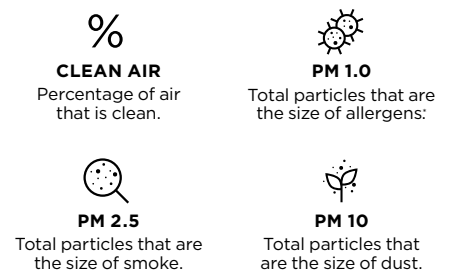
On the front display, the color of the ring tells you about your air quality.



### TRY THESE TIPS TO ENSURE CLEAN AIR CONFIDENCE.

- **Run on Auto Mode**—Fan speeds will adjust automatically. As air quality decreases, the fan speed will increase.
- **Optimize Performance in Eco Mode**—After 100% clean air status is achieved for 5 minutes in Auto Mode, your air purifier will enter Eco Mode. The HEPA filter life will be optimized.
- **Maintain Mesh Dust Filters**—When the red ring on the front display pulses, it's time to check and clean the mesh dust filter to help keep your air purifier working optimally for longer.

### PRESS ⓘ TO SWITCH BETWEEN AIR QUALITY VIEWS.



\*Allergens refers to non-living matter.