

# **Shark** **SpeedStyle™ PRO**

High-Velocity Dryer

STYLING GUIDE



FOR ALL HAIRKIND

# Get to know your SpeedStyle™ Pro



## Table of Contents

### Getting Started:

|                                |   |
|--------------------------------|---|
| How it Works .....             | 1 |
| Get to Know Your Stylers ..... | 2 |

### Shark Beauty™ Unique Accessories:

|                                    |   |
|------------------------------------|---|
| QuickSmooth Brush .....            | 4 |
| Express Touchup Brush .....        | 6 |
| FrizzFighter™ Finishing Tool ..... | 8 |

### Shark Beauty™ Traditional Accessories:

|                                      |    |
|--------------------------------------|----|
| Turbo Concentrator .....             | 10 |
| DefrizzFast Diffuser .....           | 12 |
| Lift & Stretch Wide-Tooth Comb ..... | 14 |

Accessories may vary per model.  
For accessories and replacements, please visit [sharkbeauty.com](http://sharkbeauty.com).

## How it works



**TIP:** All 3 red temperature lights will be OFF when **Cool Shot** is engaged.

# IQ Speed Styling & Drying Suite™

This model may not include all stylers.

- 1 FrizzFighter™ Finishing Tool:** Eliminates frizz and flyaways  
Uses Coanda Technology to automatically attract frizz and flyaways and remove them in seconds.



- 2 QuickSmooth Brush:** Dry, volumize, and smooth all at once  
2 bristle types  
Combination of volumizing and smoothing bristles for grabbing, smoothing, and shining.



- 3 Turbo Concentrator:** Style and dry at the same time  
Hyper-concentrated air path for precise, fast drying.  
Rotates for easy styling.



- 4 DefrizzFast Diffuser:** Fast, even drying from root to tip  
Use the lever to extend or retract the prongs for a customizable airflow.  
Extend prongs—for longer, thicker hair or reaching and lifting the roots.  
Retract prongs—for shorter, finer hair or if the ends need a little extra air.



- 5 Express Touchup Brush:** Smooths and tames bangs, layers, and ends  
2 bristle types  
Combination of volumizing and smoothing bristles for added tension, smoothing, and shining.



- 6 Lift & Stretch Wide-Tooth Comb:** Stretch and lengthen from roots to ends  
Uses two rows and two lengths of teeth to stretch and elongate natural curls and coils.

## Cool Touch Locations

Hold accessories here when removing them.



To order additional accessories, visit [sharkbeauty.com](http://sharkbeauty.com)

## Cool Touch Locations

Hold accessories here when removing them.



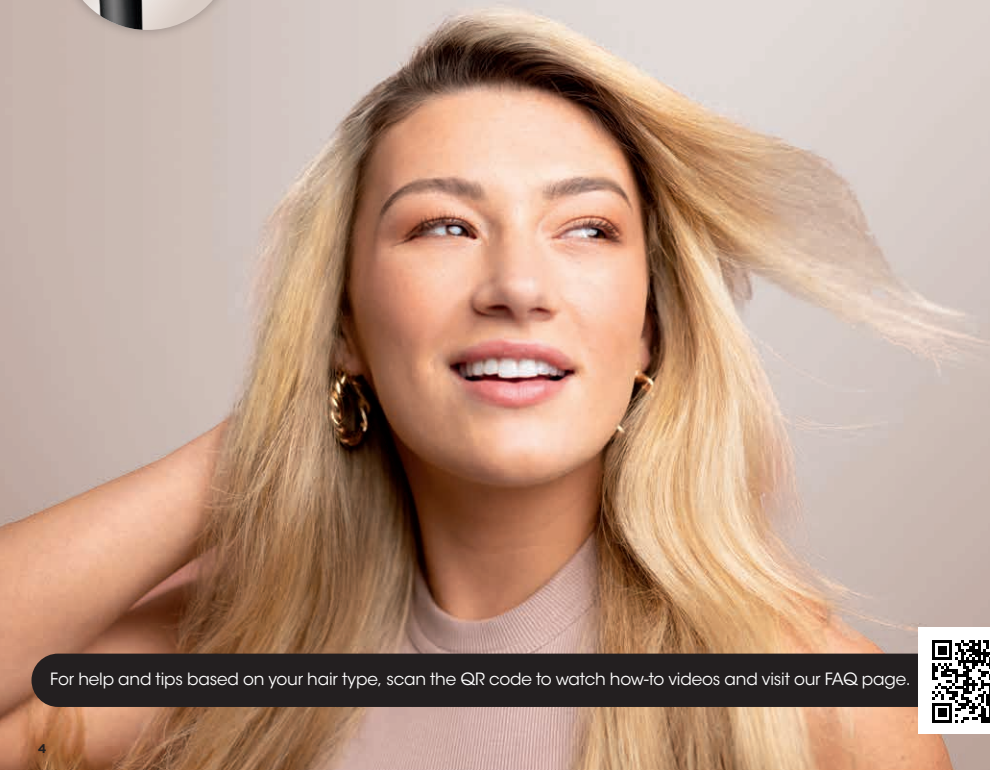
To order additional accessories, visit [sharkbeauty.com](http://sharkbeauty.com)

# Achieve voluminous blowout styles.

Setting:  air    |    temp



## QuickSmooth Brush



1



Begin with 80% dry hair. For best results, section and detangle your hair as desired to help build volume at the roots.

Pro Tip: Apply hair products or styling agents as desired.

2



Press the button on the side of the brush to rotate the brush into the desired orientation. For a sleek blowout, place the brush close to the roots to engage the bristles.

3



Use a rounding motion as you brush down your hair to engage the smoothing bristles and gently grip the hair.

Pro Tip: For volume and shape, scoop from underneath the root.

4



Repeat on remaining sections until hair has been dried into a sleek blowout.

Pro Tip: Set your style and help reduce frizz by pressing the Cool Shot button.

For help and tips based on your hair type, scan the QR code to watch how-to videos and visit our FAQ page.



### Additional Styling Tips:

- If you have thick hair, try brushing smaller sections for smoother results.
- If you have curly or coily hair, try repeatedly brushing smaller sections and increasing the heat to help achieve a straighter style.
- For added volume, place the brush under the hair section close to the roots and brush upward using a rounding motion.

# Bring the bounce.

Setting:  air    |  temp 



## Express Touchup Brush



For help and tips based on your hair type, scan the QR code to watch how-to videos and visit our FAQ page.



1



Begin with 90% dried hair.

Pro Tip: Apply hair products or styling agents as desired.

2



Section your hair as desired. For voluminous blowouts, start by placing the round brush under the hair close to the roots.

Pro Tip: For even more volume, hold the brush under your hair close to the roots for 3 seconds before brushing outward.

3



Using the knob, roll the brush outward from the roots to the ends to engage the bristles and gently grip the hair.

Pro Tip: For extra volume, brush your hair in an upward direction.

4



To style your bangs or ends, place hair on the brush, then twist the brush to dry and create shape.

Pro Tip: Set your style and help reduce frizz by pressing the Cool Shot button.

### Additional Styling Tips:

- If you have thick hair, try increasing the heat for even faster results.
- If you have curly or coily hair, try increasing the heat to help achieve a straighter style.
- For added volume and shape, brush opposite of the way the hair falls while twisting to smooth and dry.
- Brush is best used to finish styling your face-framing pieces and ends of hair.

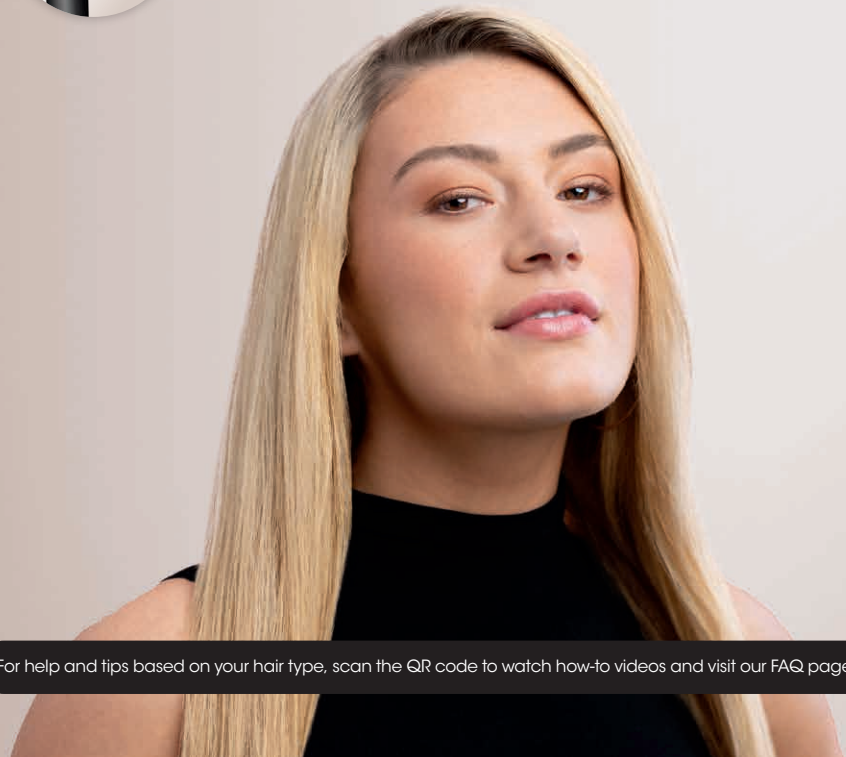


# Go from frizzy to glossy.

Setting:  air ● ● ● | ● ● ● temp 



## FrizzFighter™ Finishing Tool



Begin with completely dry hair that has been styled with the Turbo Concentrator, QuickSmooth Brush, or Express Touchup Brush.

Pro Tip: Works best on straight or straightened hair.



Start at the top of your head, close to the roots. Hold until the hair attracts.



Slowly glide the FrizzFighter™ Finishing Tool down the length of your hair. Gently touch your hair with the tool—no need to press it against your head.



Repeat around your head.

For help and tips based on your hair type, scan the QR code to watch how-to videos and visit our FAQ page.



### Additional Styling Tips:

- If you have thinner/finer hair you can decrease the airflow to help reduce flyaways.
- If you have thinner/finer hair you can decrease the heat.

# Sleek blowouts, made easy.

Setting:  air ● ● ● | ● ● ● temp 



## Turbo Concentrator



1



Begin with damp hair. Gentle-dry, applying airflow from the roots to the ends.

Pro Tip: Apply hair products or styling agents as desired.

2



When excess moisture is gone, start styling with a round brush. Rotate the concentrator so airflow is always in line with the round brush.

3



Apply heat in a downward motion for smoothing.

Pro Tip: Apply heat at ends for shaping and bending.

4



Finish styling by setting shape at ends and pressing the Cool Shot button.

For help and tips based on your hair type, scan the QR code to watch how-to videos and visit our FAQ page.



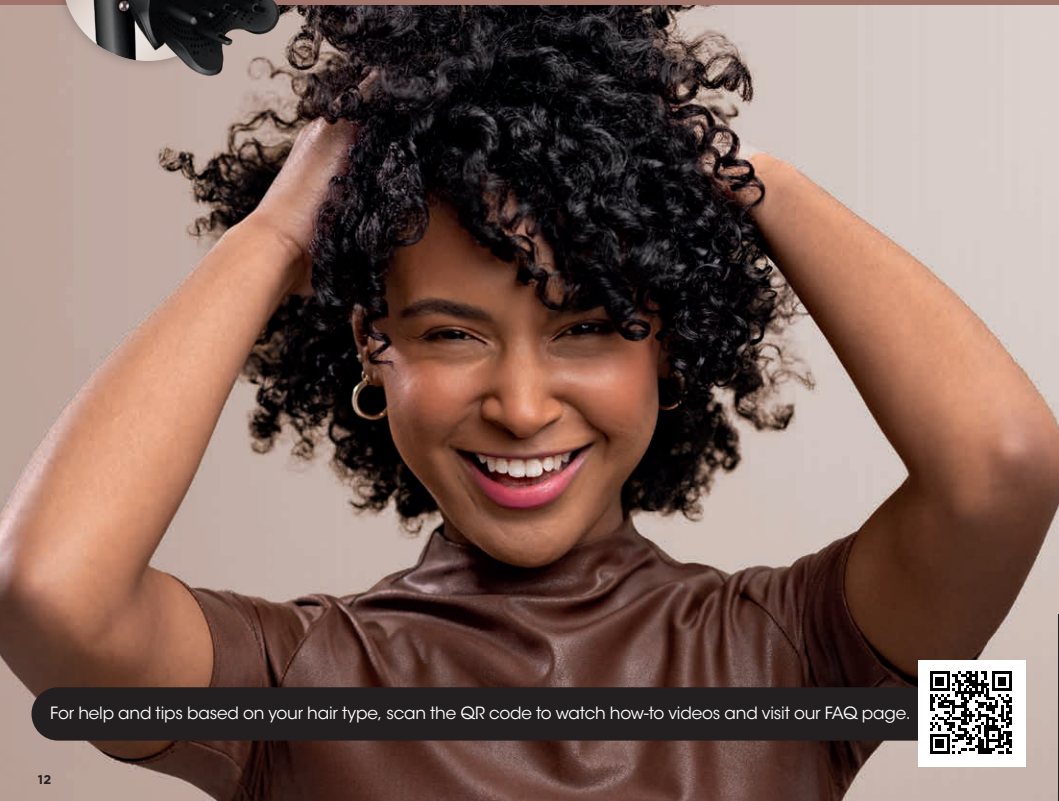
### Additional Styling Tips:

- If you have fine hair, try reducing the airflow to help cut down on frizz.
- To create a curl, wrap your hair around a round brush and dry it in place using the concentrator.
- For added volume, place a round brush under the roots and brush upward while drying with the concentrator.
- For an added curl at the ends, roll the ends of the hair onto a round brush and dry in place using the concentrator.

# Define your natural curls.

Setting:  air   |   temp 

## DefrizzFast Diffuser



For help and tips based on your hair type, scan the QR code to watch how-to videos and visit our FAQ page.



Begin with towel-dried hair. Working around your head, bunch curls from ends between the petals of the diffuser.

Pro Tip: Apply curly hair products or styling agents as desired to wet hair.



Bring the diffuser up to the roots. Pause and hold.



For more volume, slide the lever to extend prongs to lift roots higher.

Pro Tip: Gather hair in diffuser with prongs retracted, then extend them when you reach the roots to increase grab and maximize airflow.



If desired, flip upside down and bunch from below for extra volume.

Pro Tip: Keep the integrity of your natural curls by switching between Low temp and the Cool Shot button.

### Additional Styling Tips:

- Apply curly hair products to wet hair before drying to help define your curls and cut down on frizz.
- If you have thick hair, try increasing the heat for even faster results.

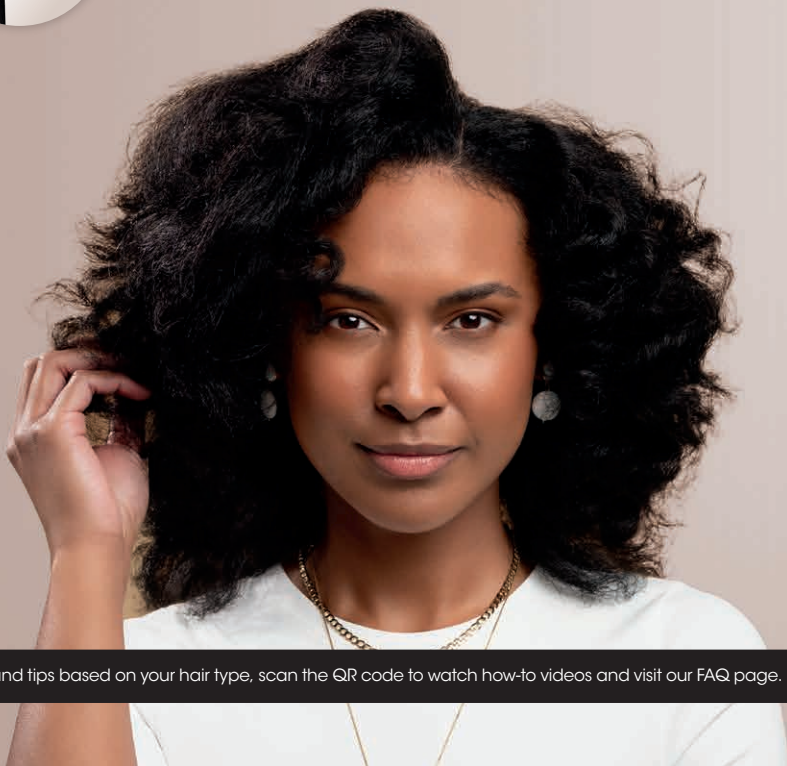


# Stretch your natural hair.

Setting:  air  temp 



## Lift & Stretch Wide-Tooth Comb



For help and tips based on your hair type, scan the QR code to watch how-to videos and visit our FAQ page.



1



Begin with towel-dried hair. Section your hair as desired. Make sure to detangle each section to help prevent snagging.

Pro Tip: Apply your favorite styling products as desired.

2



Slowly comb your hair from the roots to the ends. Continue combing your section until hair has been stretched and dried.

Pro Tip: Hold the ends of your hair while combing for added tension and length.

3



Repeat on remaining sections. Press the Cool Shot button to lock in your style.

Pro Tip: Detach and reorient the comb as needed to easily reach all areas on your head.

4



Continue styling your stretched hair as desired.

### Additional Styling Tips:

- For added volume at the roots, comb through hair in an upward direction.
- Decrease the heat to help maintain hair texture while stretching.

# ***Shark*** **BEAUTY™**

HD700\_Series\_StyleGuide\_MP\_Mv4

© 2024 SharkNinja Operating LLC.

SHARK is a registered trademark of SharkNinja Operating LLC.  
FOR ALL HAIRKIND, FRIZZFIGHTER, SHARK BEAUTY, and SPEEDSTYLE  
are trademarks of SharkNinja Operating LLC.